

For the Canadair Regional Jet-700 Goodrich Lighting Systems developed a new generation of HID landing and taxi lights. The driving force for the new design was the demand for more light power. The design and the development was according to the FAR §25.1383 and in consideration of the SAE-ARP 693.

In comparison to a sealed beam lamp, the HID decreases the power consumption immensely: With nearly the same light output, the HID needs only a fifth of the power consumption. The beam spread was adapted to the required light distribution of Canadair.

HID LANDING LIGHT 1X2 455 049-00



Technical Data:

- Peak-Light intensity: 345,000 cd min.
- Beam spread at 10%: 8°
- Environmental conditions and electromagnetic compatibility: DO 160 C
- Total life: 4,000 h
- Mass: 0.635 kg (1.4 lbs) max.
- Depth: 145.6 mm (5.732")
- Outside diameter: 142mm (5.6")
- Cover lens diameter: 120 mm (4.72")

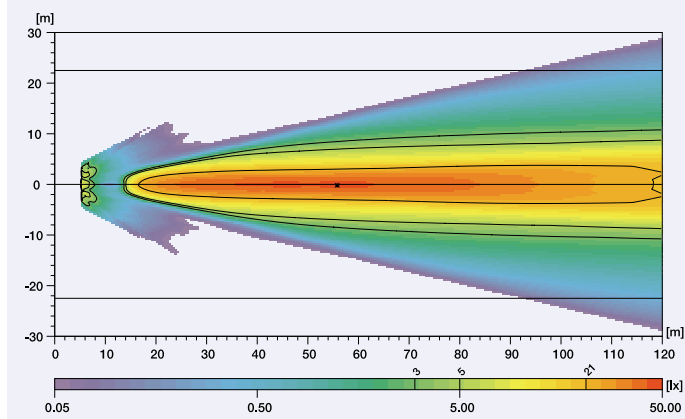
HID TAXI LIGHT 1X2 455 050-00



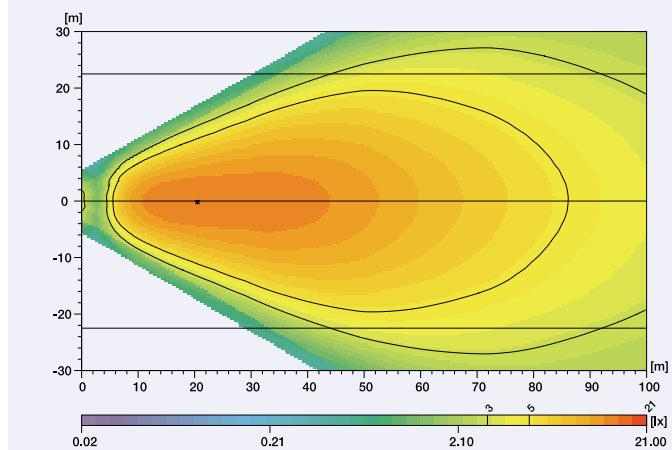
Technical Data:

- Peak-Light intensity: 56,500 cd min.
- Beam spread at 10%: 40°
- Environmental conditions and electrom. compatibility: DO 160 C
- Total life: 4,000 h
- Mass: 0.635 kg (1.4 lbs) max.
- Depth: 145.6 mm (5.732")
- Outside diameter: 142mm (5.6")
- Cover lens diameter: 120 mm (4.72")

Simulated Light distribution of 2 Landing Lights used for CRJ-700



Simulated Light distribution of 2 Taxi Lights used for CRJ-700



An Adjustment & Mounting Set 9XX 410 642-00 is included on delivery.

- 3 screws NAS 603-28P
- 3 washers
- 3 rubber bushings
- 3 springs

The lights are mounted to the aircraft with 3 screws. These can also be used for adjusting the beam direction.

