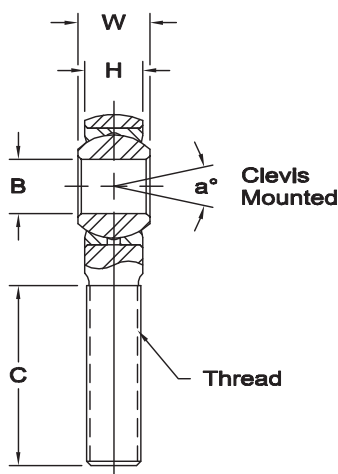
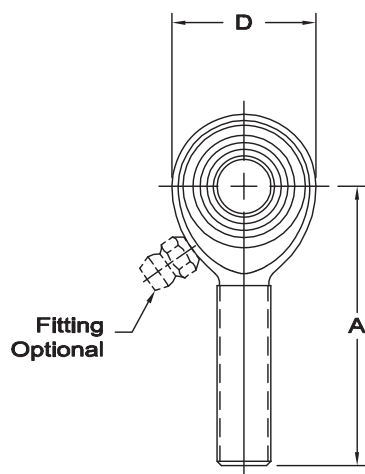




# MM & MB SERIES MALE ROD ENDS

General Purpose - Precision (PTFE Liners Available)



**Body** - Carbon steel protective coated for corrosion resistance. No. 16 series standard body is alloy steel not heat treated.

**Race** - Carbon steel, protective coated for corrosion resistance.

**Ball** - Alloy steel, heat treated, hard chrome plated.

**Notes** - All sizes available with studs upon request.



\* Check availability.

\*\* Grease fitting not available.

1 Threads 6-32 UNC.

2 Threads 1-14 UNS.

3 Tolerance variation: "D"  $\pm .020$ , "A"  $\pm .020$ , "B"  $+ .0035$ ,  $- .0005$ , "H"  $\pm .010$

4 Tolerance variation: "D"  $\pm .51$ , "A"  $\pm .51$ , "B"  $+ .089$ ,  $- .013$ , "H"  $\pm .25$

Units are supplied without grease fittings. When grease fittings are required, specify by adding suffixes as designated.

Z Zerk type fitting Ex: MM-6Z

F Flush type fitting Ex: MM-6F

T PTFE liner Ex: MM-6T

Load ratings apply only to rod ends without grease fittings. For load ratings with fittings, please consult our engineering department.

ROD END NO.		DIMENSIONS IN INCHES								a° Misalign. Angle	Ultimate Radial Static Load Capacity Lbs.	Approx. Brg. Wt. Lbs.
Right Hand	Left Hand	B + .0015 - .0005	W + .000 - .005	H $\pm .005$	A $\pm .015$	D $\pm .010$	Ball Dia. Ref.	C + .062 - .031	Thread UNF-3A			
MM-6	MB-6	.3750	.500	.406	1.938	1.000	.719	1.250	3/8-24	12	3,915	.11

ROD END NO.		DIMENSIONS IN MILLIMETERS								a° Misalign. Angle	Ultimate Radial Static Load Capacity Newtons	Approx. Brg. Wt. Grams
Right Hand	Left Hand	B + .038 - .013	W + .00 - .13	H $\pm .13$	A $\pm .38$	D $\pm .25$	Ball Dia. Ref.	C + 1.57 - .79	Thread UNF-3A			
MM-6	MB-6	9.525	12.70	10.31	49.23	25.40	18.26	31.75	3/8-24	12	17,416	51