

# PRODUCT REFERENCE MEMO

## AVAILABILITY OF SPIRALLOCK FLANGE NUTS FOR 040-21101 WHEEL ASSEMBLY

**PURPOSE:** Product Improvement. Provides additional nut to washer surface bearing area and improved nut locking feature. All new wheels, P/N 040-21101, manufactured and date coded 1/93 and after, will be equipped with the Spirallock nuts.

**APPLICABILITY:** DeHavilland Models DHC-6-1, -100, -200 and -300; those modified per STC SA1065GL. Beech Model 18 Series; those modified per STC SA1222GL.

**EFFECTIVITY:** January 1, 1993

**COMPLIANCE:** Recommended at next tire change or regularly scheduled wheel service.

**MATERIALS  
REQUIRED:** Nine (9) of each nuts P/N 094-16700 are required to retrofit one wheel.

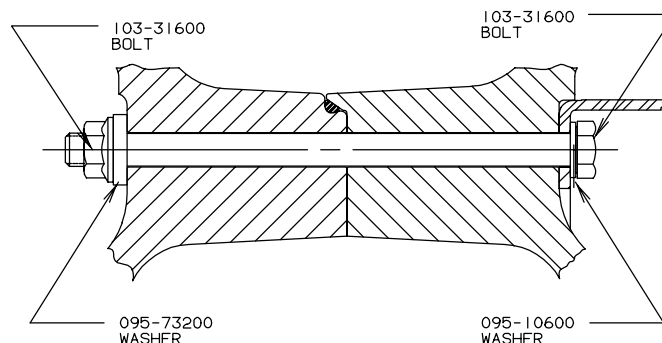
**PROCEDURE:** NOTE: All maintenance to be done per aircraft maintenance manual.

1. Prior to next tire change or regularly scheduled wheel service, visually examine the 040-21101 wheels to determine if they are equipped with the Spirallock nuts.

NOTE: Spirallock nut P/N 094-16700 is a flange nut with a 9/16" hex and a 3/4" flange diameter.

If the wheels are not equipped with the Spirallock nuts, order the quantity of nuts required for retrofit.

2. At next wheel service (or sooner at owner's option) reassemble each wheel using the Spirallock nuts P/N 094-16700 in place of the original nuts P/N 094-91500; torque at 300 in-lbs. The Spirallock nuts must be oriented with the 3/4" flange facing the washer P/N 095-73200 as shown below:



Be aware that the Spirallock nuts utilize a unique locking feature which will continue to be effective for the life of the wheel. It is normal for this style nut to be free spinning, requiring a very low "run-up" torque as compared to the original nuts.