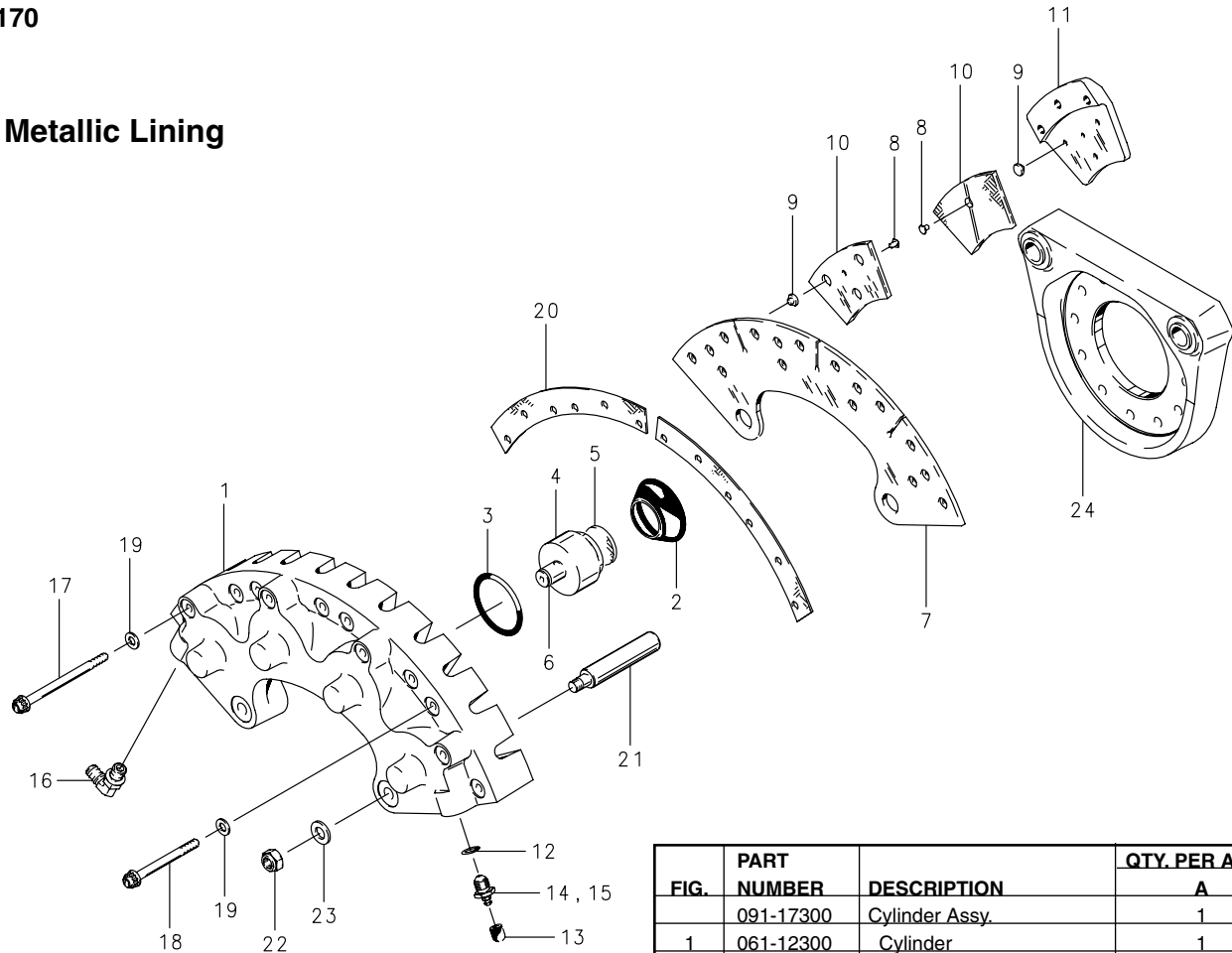


30-170

Metallic Lining



Assy. Number

A) 30-170

FIG.	PART NUMBER	DESCRIPTION	QTY. PER ASSY. A
	091-17300	Cylinder Assy.	1
1	061-12300	Cylinder	1
2	139-20000	Boot-Piston	4
3	101-05200	O-Ring (MS28775-224)	4
	092-06900	Piston Assy.	4
4	062-06800	Piston	4
5	088-01400	Insulator	4
6	082-02000	Friction Spring	4
	073-07400	Pressure Plate Assy.	1
7	063-05800	Pressure Plate	1
8	105-00200	Rivet	4
9	177-01600	Pin	12
10	066-10000	Lining	4
	074-06000	Back Plate Assy.	4
11	064-03200	Back Plate	4
8	105-00200	Rivet	4
9	177-01600	Pin	12
10	066-10000	Lining	4
12	101-00700	O-Ring (MS28775-012)	1
13	183-00100	Bleeder Cap	1
14	079-00300	Bleeder Screw	1
15	081-00200	Bleeder Seat	1
16	104-03100	Fitting	1
17	103-16700	Bolt (MS21250H04036)	4
18	103-16800	Bolt (MS21250H04024)	8
19	095-14300	Washer (MS20002-C4)	12
20	068-04600	Shim-Backplate	2
21	069-02300	Anchor Bolt	2
22	094-10100	Nut (MS21042-6)	2
23	095-10600	Washer (AN960-616)	2
24	075-17000	Torque Plate Assy.	1

Cleveland
Wheels & Brakes



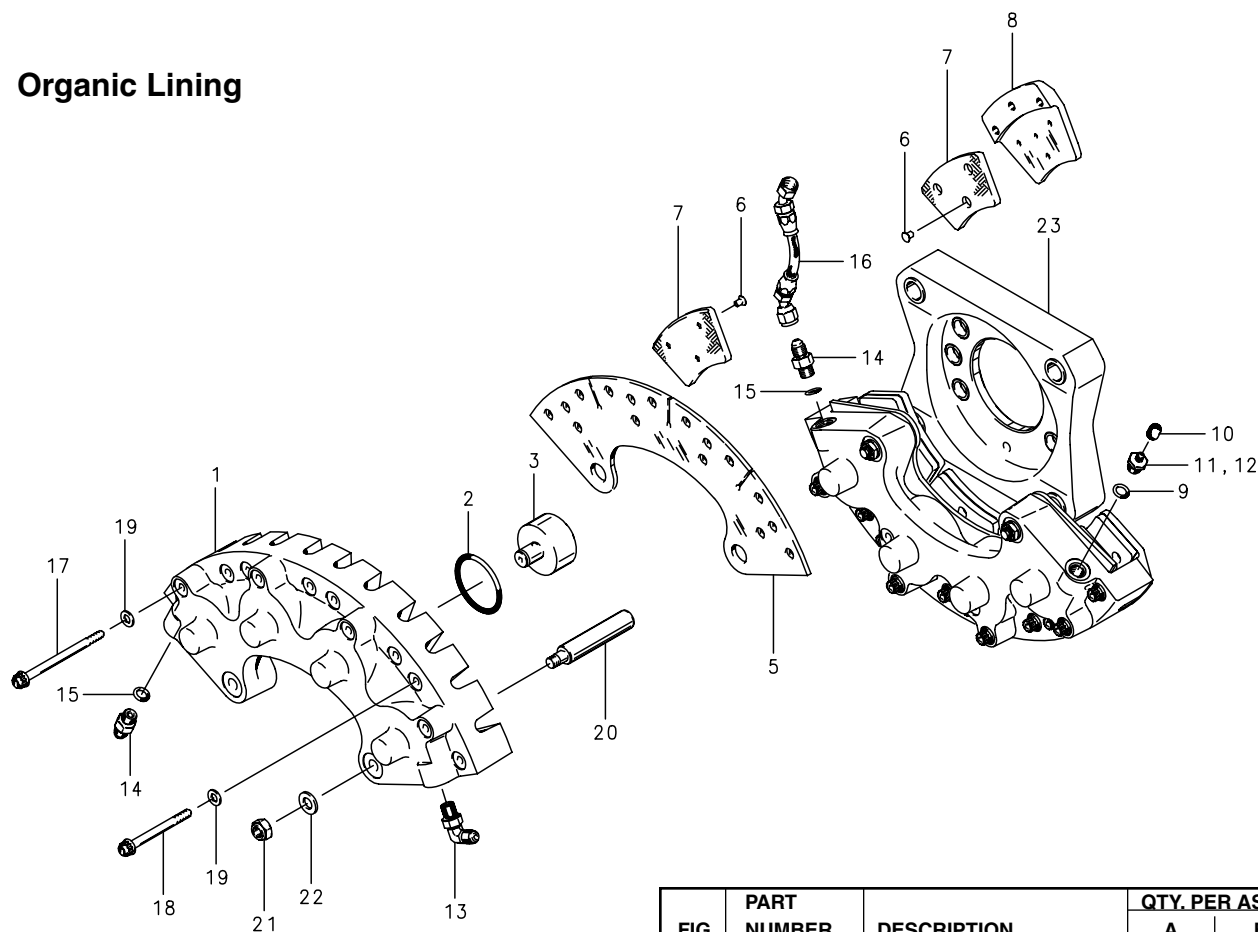
Illustrated Parts List**Brake Assembly – 12” External
Dual Cylinder, Four Piston****30-210, 30-210A****Organic Lining****Assy. Number****A) 30-210****B) 30-210A**

FIG.	PART NUMBER	DESCRIPTION	QTY. PER ASSY.	
			A	B
	091-19200	Cylinder Assy.	1	
1	061-14500	Cylinder	2	2
2	101-05200	O-ring (MS28775-224)	8	8
3	062-09301	Piston	8	8
	073-09201	Pressure Plate Assy.	2	2
5	063-05801	Pressure Plate	2	2
6	105-06700	Rivet	24	24
7	066-13100	Lining	8	8
	074-07200	Back Plate Assy.	8	8
8	064-03200	Back Plate	8	8
6	105-06700	Rivet	24	24
7	066-13100	Lining	8	8
9	101-00700	O-Ring (MS28775-012)	1	1
10	183-00100	Bleeder Cap	1	1
11	079-00300	Bleeder Screw	1	1
12	081-00200	Bleeder Seat	1	1
13	104-03100	Fitting	1	1
14	104-04900	Fitting	2	2
15	101-24600	O-Ring	2	2
16	207-01600	Hose Assy.	1	1
17	103-16700	Bolt (MS21250H04036)	8	8
18	103-16800	Bolt (MS21250H04024)	16	16
19	095-14300	Washer (MS20002-C4)	24	24
20	069-02300	Anchor Bolt	4	
	069-02301	Anchor Bolt		4
21	094-12900	Nut (MS21042-6)	4	4
22	095-10600	Washer (AN960-616)	4	4
23	075-18500	Torque Plate Assy.	1	1

Cleveland
 Wheels & Brakes
