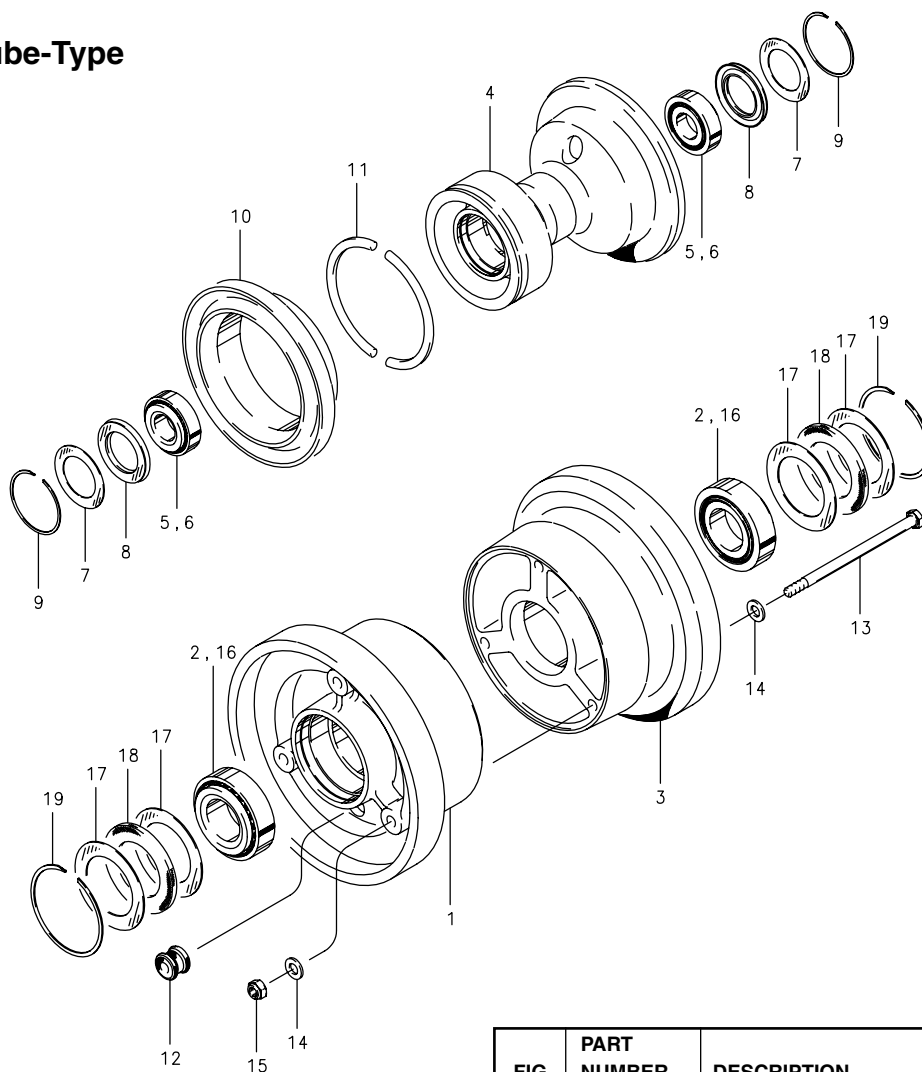
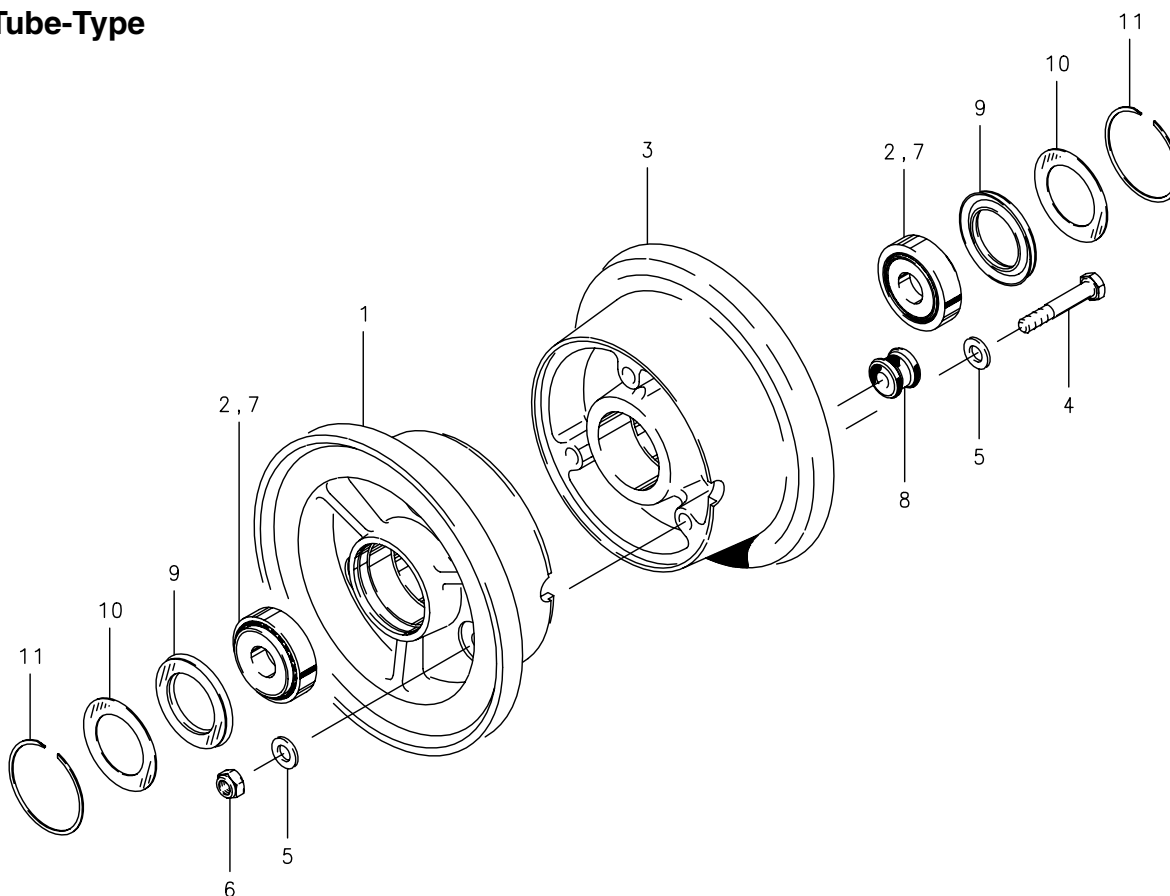


**Illustrated Parts List****Wheel Assembly – Tail**  
**10.00 S.C./4-1/2 x 12-1/2****40-50, 40-112****Tube-Type****Assy. Number****A) 40-50 (1) (3)****B) 40-112 (2) (4)****NOTES:**

- (1) Size 10.00 S.C.  
 (2) Size 4-1/2 x 12-1/2  
 (3) Fits 5/8" axle  
 (4) Fits 1" axle

FIG.	PART NUMBER	DESCRIPTION	QTY. PER ASSY.	
			A	B
1	161-04800	Inner Wheel Half Assy.		1
2	214-00900	Cup-Bearing		1
3	162-04600	Outer Wheel Half Assy.		1
	214-00900	Cup-Bearing		1
4	201-00100	Wheel Body Assy.	1	
5	214-00500	Cup-Bearing	2	
6	214-00600	Cone-Bearing	2	
7	153-01100	Ring-Grease Seal	2	
8	226-00100	Grease Seal	2	
9	155-00800	Snap Ring	2	
10	197-00100	Flange-Wheel	1	
11	198-00100	Ring-Lock	1	
12	217-00100	Grommet		1
13	103-13500	Bolt (AN4-47A)		3
14	095-10400	Washer (AN960-416)		6
15	094-10300	Nut-Lock (MS21044-N4)		3
16	214-01000	Cone-Bearing		2
17	153-01700	Ring-Grease Seal		4
18	154-02100	Felt-Grease Seal		2
19	155-00600	Snap Ring		2

**Cleveland**  
 Wheels & Brakes


**Illustrated Parts List****Wheel Assembly – Tail****10 x 3.50-4****40-199, 40-199A****Tube-Type****Assy. Number****A) 40-199 (1) (2) (3)****B) 40-199A (1) (2) (4)****NOTES:**

- (1) This wheel is not FAA-TSO approved – order from airframe manufacturer only.
- (2) Additional tire sizes:  
4.10/3.50-4, 2.80/2.50-4,  
8 x 3.00-4.
- (3) Fits 5/8" axle.
- (4) Fits 1" axle.

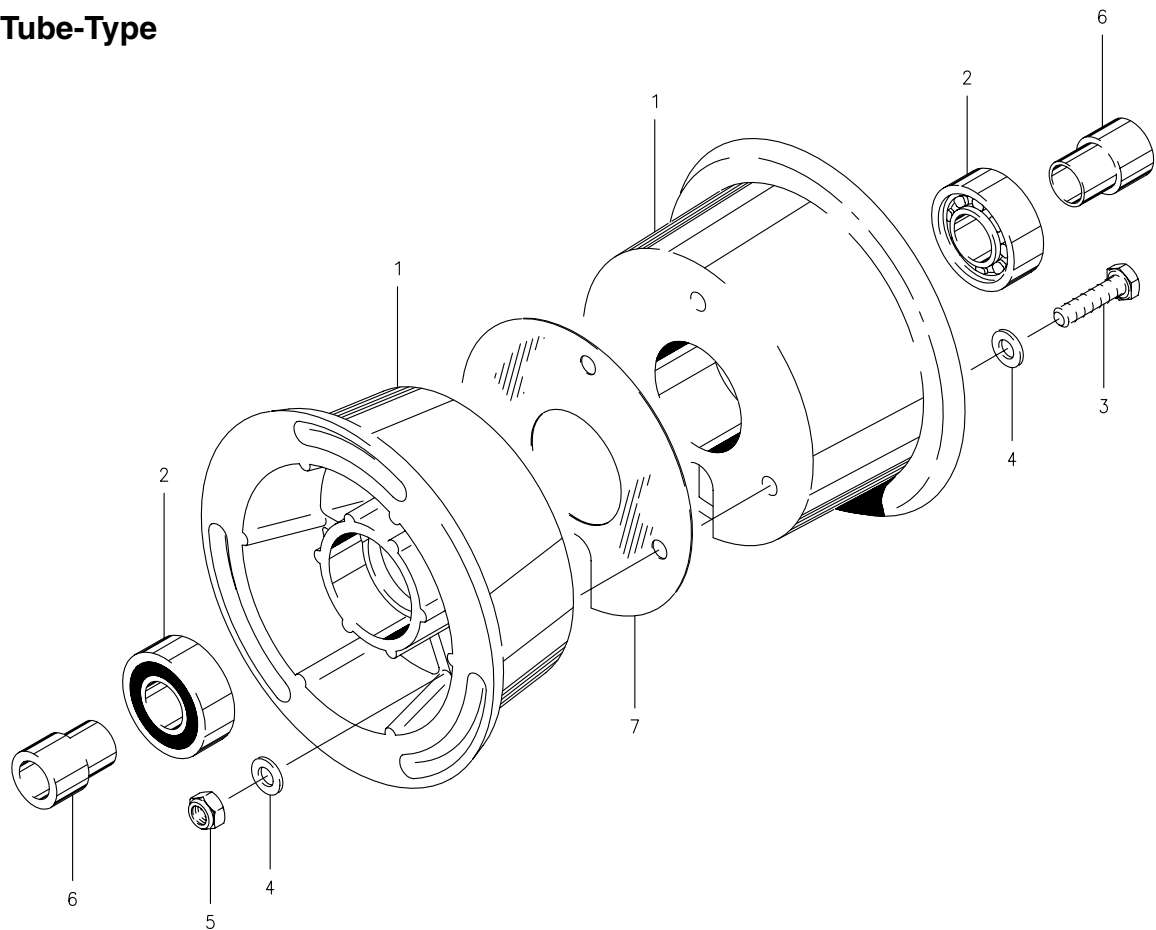
FIG.	PART NUMBER	DESCRIPTION	QTY. PER ASSY.	
			A	B
1	161-12200	Inner Wheel Half Assy.	1	
	161-14400	Inner Wheel Half Assy.		1
2	214-00500	Cup-Bearing	1	
	214-82700	Cup-Bearing		1
3	162-11200	Outer Wheel Half Assy.	1	
	162-13200	Outer Wheel Half Assy.		1
2	214-00500	Cup-Bearing	1	
	214-82700	Cup-Bearing		1
4	103-10600	Bolt (AN4-23A)	3	3
5	095-10400	Washer (AN960-416)	6	6
6	094-10300	Nut (MS21044-N4)	3	3
7	214-00600	Cone-Bearing	2	
	214-82800	Cone-Bearing		2
8	217-00100	Grommet	1	1
9	226-00100	Grease Seal	2	2
10	153-01100	Ring-Grease Seal	2	2
11	155-00800	Snap Ring	2	2

**Cleveland**  
Wheels & Brakes



D-30380

**Tube-Type**



**Assy. Number**

A) D-30380

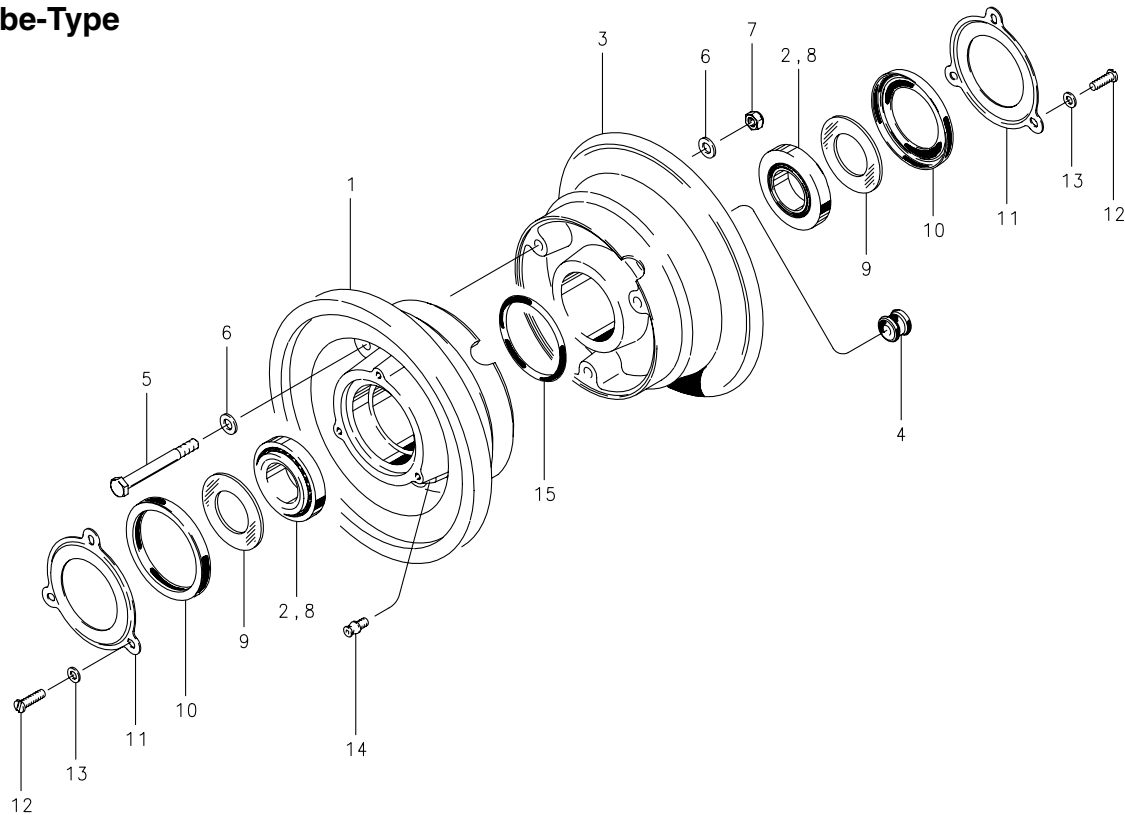
**NOTES:**

(1) All wheel assemblies were formerly manufactured by "McCauley Industrial Corporation."

FIG.	PART NUMBER	DESCRIPTION	QTY. PER ASSY.
			A
1	161-30382	Wheel Half Assy.	2
2	214-30371	Bearing	2
3	103-14700	Bolt (AN4-7A)	3
4	095-10200	Washer (AN960-416L)	6
5	094-15300	Nut	3
6	067-30372	Spacer	2
7	068-30373	Gasket	1

40-168

Tube-Type



Assy. Number  
A) 40-168

FIG.	PART NUMBER	DESCRIPTION	QTY. PER ASSY.
			A
1	161-10400	Inner Wheel Half Assy.	1
2	214-00900	Cup-Bearing	1
3	162-09700	Outer Wheel Half Assy.	1
2	214-00900	Cup-Bearing	1
4	217-00100	Grommet	1
5	103-10500	Bolt (AN4-22A)	3
6	095-10400	Washer (AN960-416)	6
7	094-01200	Nut (MS21042-4)	3
8	214-01000	Cone-Bearing	2
9	067-06200	Spacer	2
10	154-03500	Grease Seal-Molded	2
11	153-00500	Ring-Grease Seal	2
12	102-05100	Screw-F.H. Cap (AN500-8-8)	6
13	095-15100	Washer-Lock (MS35333-38)	6
14	213-00600	Fitting-Grease	1
15	101-25300	O-Ring (MS28775-134)	1