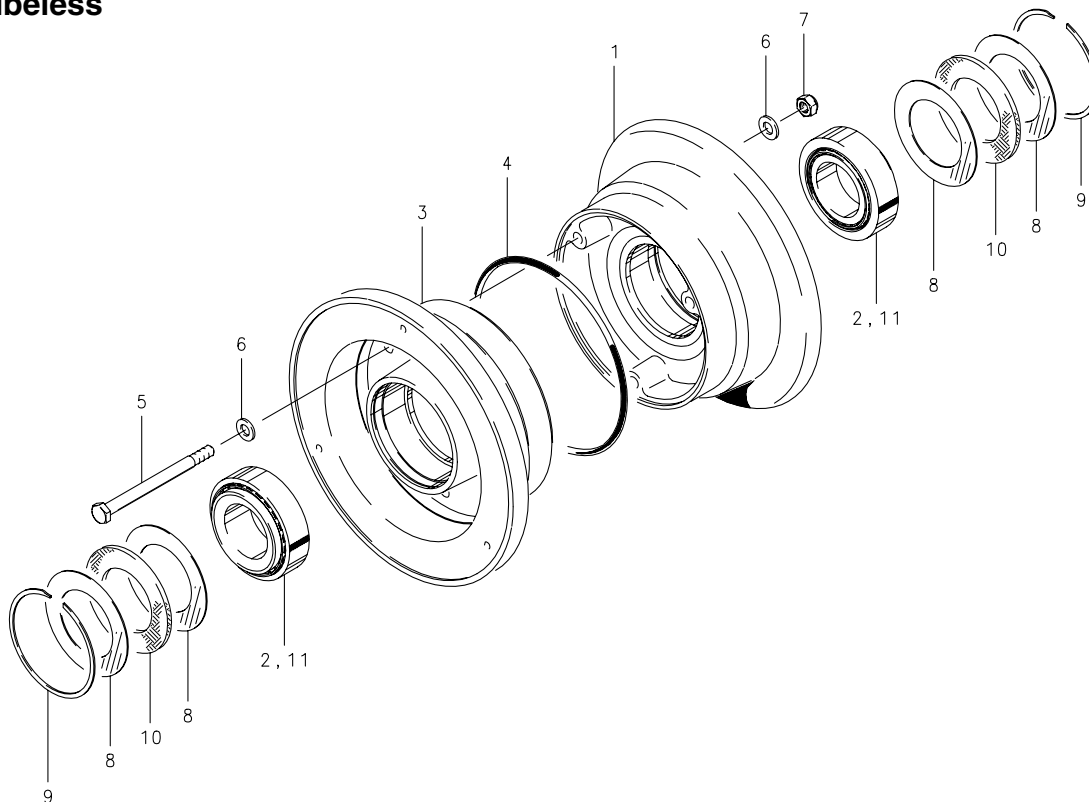


Illustrated Parts List**Wheel Assembly – Nose****5.00-5****21-100D (40-2), 40-18, 40-33, 40-262A****Tubeless****Assy. Number****A) 21-100D (40-2) (1) (2)****B) 40-18 (1) (2)****C) 40-33 (2) (3)****D) 40-262A****NOTES:**

(1) Use tubeless tire with needle inflation.

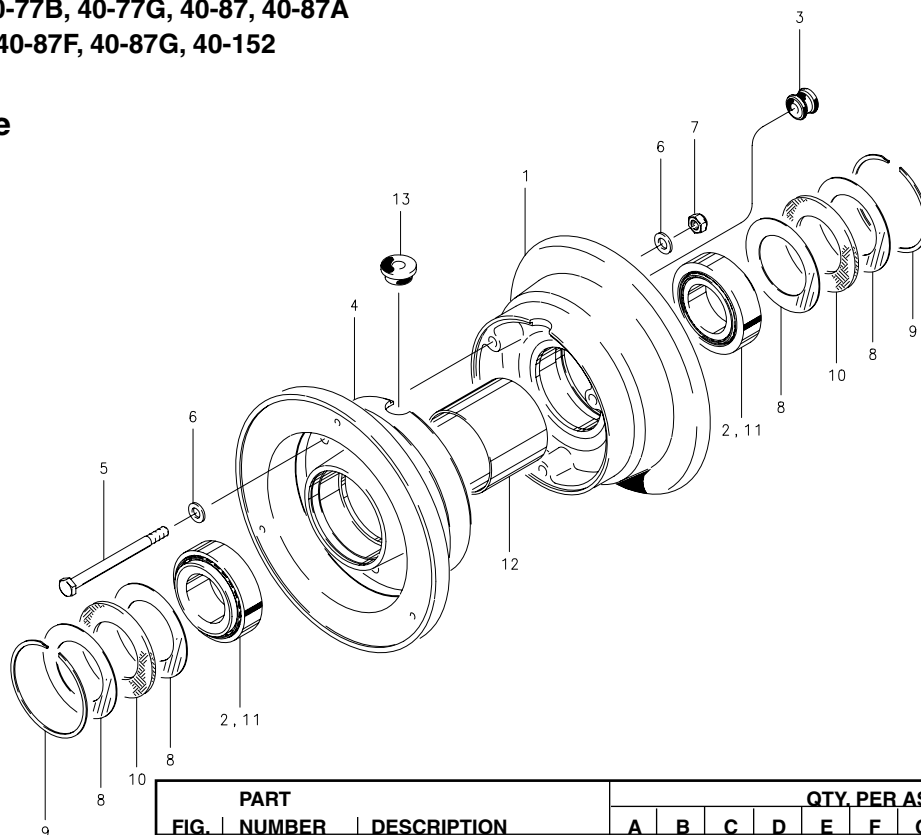
(2) Inactive assembly – spares support only for parts listed.

(3) 40-33 superseded by 40-87.

(4) Inactive part – no longer available for spares support.

FIG.	PART NUMBER	DESCRIPTION	QTY. PER ASSY.			
			A	B	C	D
1	162-00500	Outer Wheel Half Assy.	1	1		
	162-15200	Outer Wheel Half Assy.				1
	(4)	Outer Wheel Half Assy.			1	
2	214-00300	Cup-Bearing	1	1	1	
	214-03300	Cone-Bearing				1
3	161-00500	Inner Wheel Half Assy.	1	1		
	161-16300	Inner Wheel Half Assy.				1
	(4)	Inner Wheel Half Assy.			1	
2	214-00300	Cup-Bearing	1	1	1	
	214-03300	Cone-Bearing				1
4	101-07200	O-Ring (MS28775-244)	1	1		
	101-50242	O-Ring (MS28775-242)				1
	160-01900	Air Valve (MS27436-1)				1
5	103-10800	Bolt (AN4-31A)	3	3	3	
	103-17800	Bolt				3
6	095-10400	Washer (AN960-416)	6	6	6	
	095-73400	Washer (MS14177-4)				6
7	094-10300	Nut (MS21044-N4)	3	3	3	
	094-10100	Nut				3
8	153-00100	Ring-Grease Seal	4		4	
	153-00800	Ring-Grease Seal		4		
9	155-00200	Snap Ring	2	2	2	2
	154-00100	Felt-Grease Seal	2		2	
10	154-00600	Felt-Grease Seal		2		
	154-03200	Felt-Grease Seal				2
11	214-00400	Cone-Bearing	2	2	2	

Cleveland
 Wheels & Brakes


Illustrated Parts List**Wheel Assembly – Nose****5.00-5****40-77, 40-77A, 40-77B, 40-77G, 40-87, 40-87A****40-87C, 40-87D, 40-87F, 40-87G, 40-152****Tube - Type****Assy. Number**

A) 40-77

B) 40-77A

C) 40-77B

D) 40-77G

E) 40-87

F) 40-87A

G) 40-87C

H) 40-87D

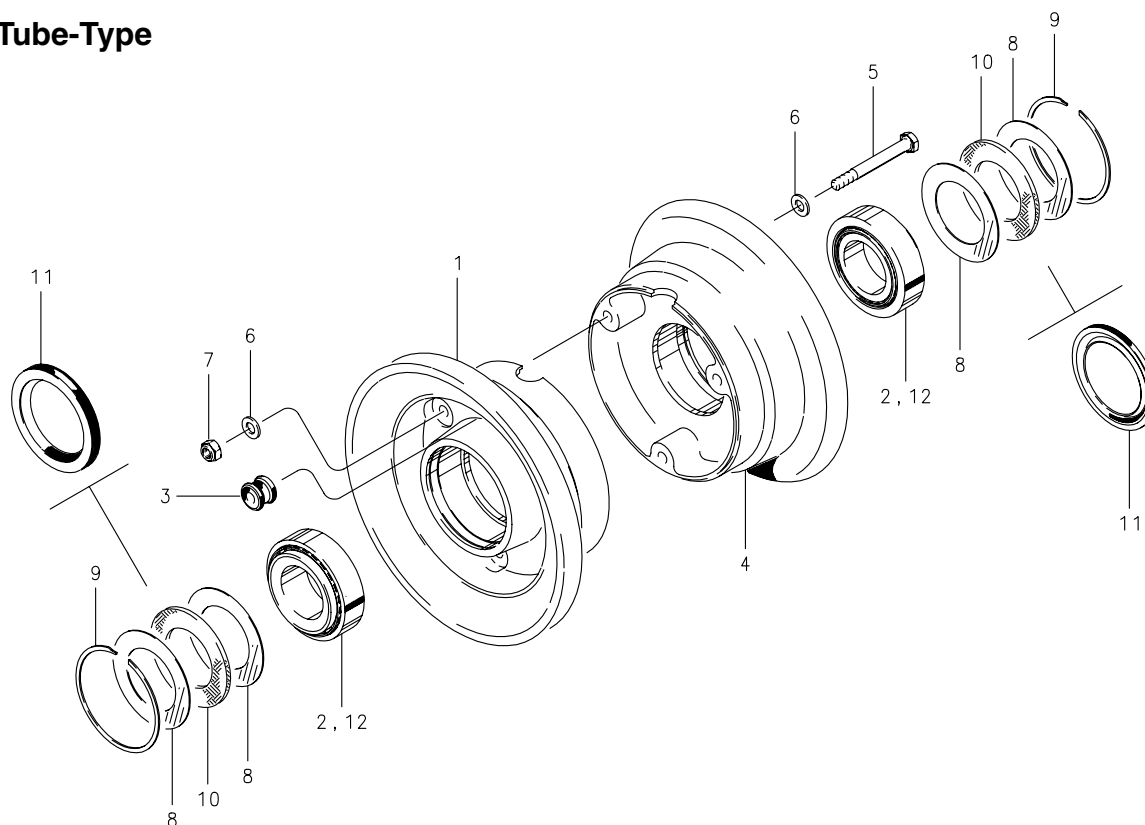
I) 40-87F

J) 40-87G

K) 40-152

FIG.	PART NUMBER	DESCRIPTION	QTY. PER ASSY.										
			A	B	C	D	E	F	G	H	I	J	K
1	162-02800	Outer Wheel Half Assy.	1	1			1				1	1	
	162-03600	Outer Wheel Half Assy.						1		1			
	162-03900	Outer Wheel Half Assy.							1				
	162-05300	Outer Wheel Half Assy.			1	1							1
2	214-00300	Cup-Bearing	1	1	1	1	1	1	1	1	1	1	1
3	217-00100	Grommet	1	1	1	1	1	1	1	1	1	1	1
4	161-03100	Inner Wheel Half Assy.	1	1			1				1	1	
	161-03800	Inner Wheel Half Assy.						1		1			
	161-04100	Inner Wheel Half Assy.							1				
	161-05500	Inner Wheel Half Assy.			1	1							1
2	214-00300	Cup-Bearing	1	1	1	1	1	1	1	1	1	1	1
5	103-10500	Bolt (AN4-22A)	3	3	3		3	3	3	3	3		3
	103-15100	Bolt (NAS6604-30)										3	
	103-85600	Bolt (MS21250-04030)				3							
6	095-10400	Washer (AN960-416)	6	6	6		6	6	6	6	6	6	6
	095-14600	Washer (MS14155-4)				6							
7	094-01200	Nut (MS21042-4)	3	3	3		3	3	3	3	3		3
	094-10301	Nut (MS21045-4S)										3	
	094-13800	Nut				3							
8	153-00100	Ring-Grease Seal					4	4	4				4
	153-00800	Ring-Grease Seal	4	4	4	4							
9	155-00200	Snap Ring	2	2	2	2	2	2	2	2	2	2	2
10	154-00100	Felt-Grease Seal					2	2	2				2
	154-00600	Felt-Grease Seal	2	2	2	2							
	154-03200	Molded Grease Seal								2	2	2	
11	214-00400	Cone-Bearing	2	2	2	2	2	2	2	2	2	2	2
12	067-04900	Spacer											1
13	217-30653	Grommet				1							

Cleveland
 Wheels & Brakes

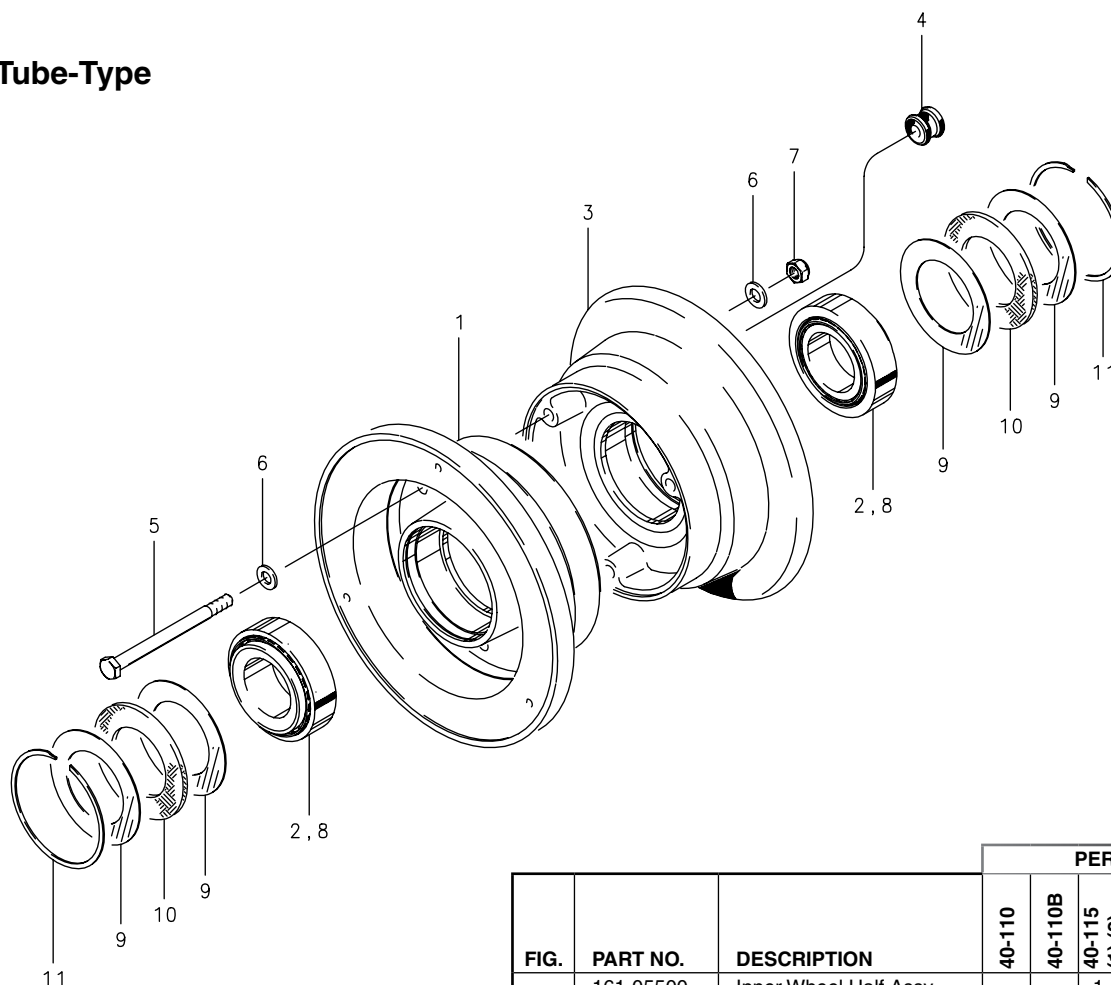

Illustrated Parts List**Wheel Assembly – Nose****5.00-5****40-77C, 40-77D, 40-77E, 40-77F****Tube-Type****Assy. Number****A) 40-77C (4)****B) 40-77D (1) (2)****C) 40-77E (5)****D) 40-77F****NOTES:**

- (1) Inactive assembly – spares support only for parts listed.
- (2) 40-77E supersedes 40-77D.
- (3) Inactive part – no longer available for spares support.
- (4) 199-261 Tiebolt Service Kit available for this wheel. Refer to PRM 83.
- (5) 199-263 Tiebolt Service Kit available for this wheel. Refer to PRM 83.

FIG.	PART NUMBER	DESCRIPTION	QTY. PER ASSY.			
			A	B	C	D
1	162-07200	Outer Wheel Half Assy.	1			
	162-07201	Outer Wheel Half Assy.		1	1	
	162-08200	Outer Wheel Half Assy.				1
2	214-00300	Cup-Bearing				1
	214-03200	Cup-Bearing	1	1	1	
3	217-00100	Grommet	1	1	1	1
4	161-07700	Inner Wheel Half Assy.	1			
	161-07701	Inner Wheel Half Assy.		1	1	
	161-08800	Inner Wheel Half Assy.				1
2	214-00300	Cup-Bearing				1
	214-03200	Cup-Bearing	1	1	1	
5	103-10500	Bolt (AN4-22A)	3	3	3	3
6	095-10200	Washer (AN960-416L)	6	6	6	
	095-10400	Washer (AN960-416)				6
7	094-01200	Nut (MS21042-4)	3		3	3
	094-10300	Nut (MS21044-N4)		3		
8	153-00800	Ring-Grease Seal	4			4
9	155-00200	Snap-Ring	2		2	2
10	154-00600	Felt-Grease Seal	2			2
11	(3)	Felt-Grease Seal		2		
	154-03200	Molded Grease Seal			2	
12	214-00400	Cone-Bearing				2
	214-03300	Cone-Bearing	2	2	2	

Cleveland
Wheels & Brakes



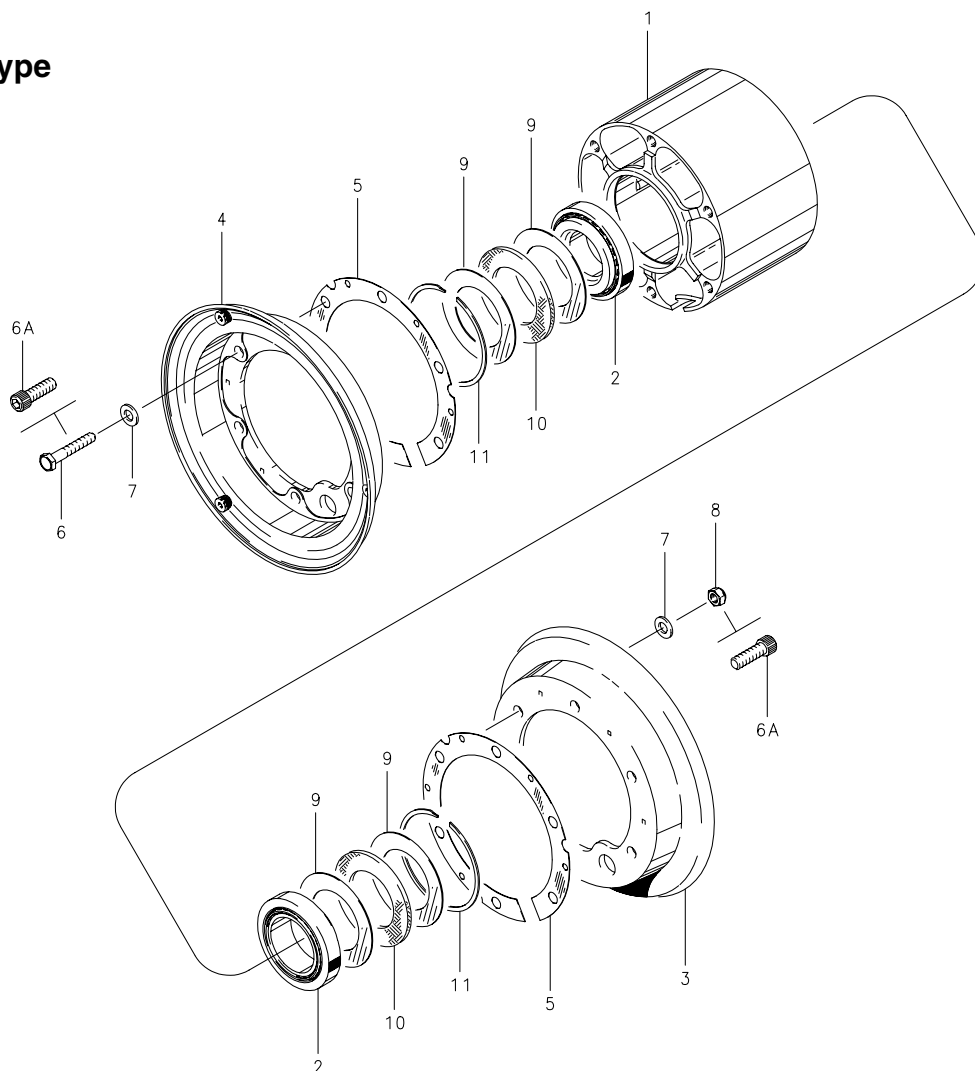
40-110, 40-110B, 40-115, 40-115A, 40-115B, 40-115C**Tube-Type****NOTES:**

- (1) Inactive Assembly - spares support only for parts listed.
 (2) 40-115A supersedes 40-115.

FIG.	PART NO.	DESCRIPTION	PER ASSY.					
			40-110	40-110B	40-115 (1) (2)	40-115A	40-115B	40-115C
1	161-05500	Inner Wheel Half Assy.			1	1		
	161-06500	Inner Wheel Half Assy.	1	1				
	161-12900	Inner Wheel Half Assy.					1	1
2	214-00300	Cup-Bearing	1	1	1	1	1	1
3	162-05300	Outer Wheel Half Assy.			1	1		
	162-06100	Outer Wheel Half Assy.	1	1				
	162-11900	Outer Wheel Half Assy.					1	1
2	214-00300	Cup-Bearing	1	1	1	1	1	1
4	217-00100	Grommet	1	1	1	1	1	1
5	103-10500	Bolt (AN4-22A)	3	3	3			
	103-85600	Bolt (MS21250-0403)				3	3	3
6	095-10400	Washer (AN960-416)	6	6	6			
	095-14300	Washer (MS20002C4)				6	6	6
7	094-01200	Nut (MS21042-4)	3	3				
	094-10300	Nut (MS21044-N4)			3			
	094-10301	Nut (MS21045-4S)				3	3	3
8	214-00400	Cone-Bearing	2	2	2	2	2	2
9	153-00100	Ring-Grease Seal	4	4	4	4		
10	154-00100	Felt-Grease Seal	2	2	2	2		
	154-04100	Molded Grease Seal					2	2
11	155-00200	Snap Ring	2	2	2	2	2	2

C-30174-1, C-30480

Tube-Type



NOTES:

- (1) All wheel assemblies listed were formerly manufactured by "McCauley Industrial Corporation."
- (2) Inactive assembly – spares support only for parts listed.
- (3) Superseded by D-30500.
- (4) Inactive part – no longer available for spares support.

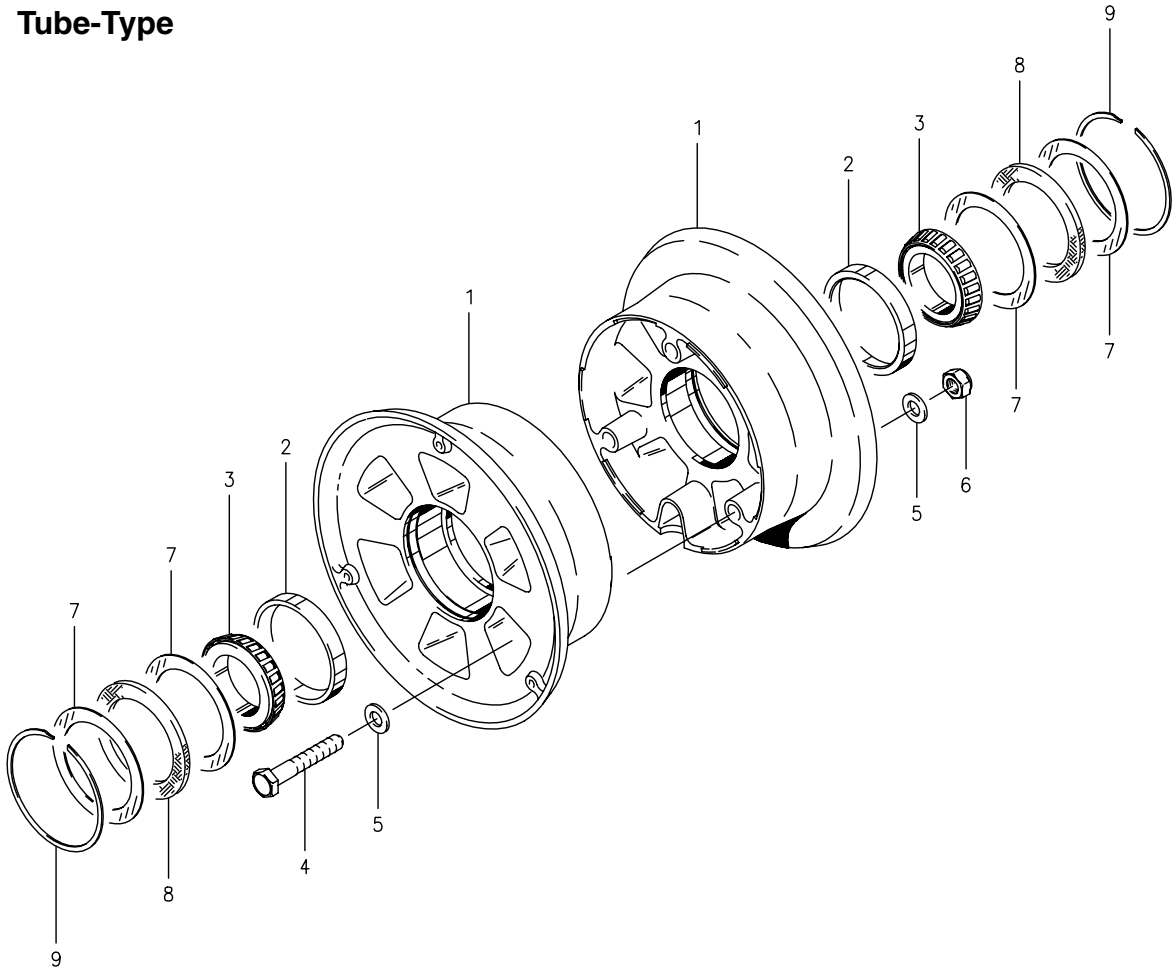
			PER ASSY.	
FIG.	PART NO.	DESCRIPTION	C-30174-1 (2) (3)	C-30480 (2) (3)
1	(4)	Hub Assembly	1	
	(4)	Hub Assembly		1
2	(4)	Bearing	2	2
3	(4)	Wheel Flange	2	
	(4)	Wheel Flange		1
4	(4)	Wheel Flange		1
5	(4)	Spacer	2	2
6	(4)	Bolt	6	
6A	(4)	Screw		12
7	(4)	Washer	12	
8	095-10500	Washer (AN960-516)		12
9	153-00800	Ring	4	4
10	(4)	Felt	2	2
11	155-11800	Snap Ring	2	2

Cleveland
Wheels & Brakes



D-30500, D-30500-1

Tube-Type



NOTES:

(1) All wheel assemblies listed were formerly manufactured by "McCauley Industrial Corporation."

			PER ASSY.	
FIG.	PART NO.	DESCRIPTION	D-30500	D-30500-1
1	161-30598	Wheel Half Assembly	2	
	161-30598-1	Wheel Half Assembly		2
2	214-03200	Cup-Bearing	2	
	214-30794-1	Cup-Bearing		2
3	214-03300	Cone-Bearing	2	
	214-30794-2	Cone-Bearing		2
4	103-17300	Bolt	3	3
5	095-10500	Washer (AN960-516)	6	6
6	094-15100	Nut	3	3
7	153-00800	Ring	4	4
8	154-00600	Felt	2	2
9	155-11800	Snap Ring	2	2