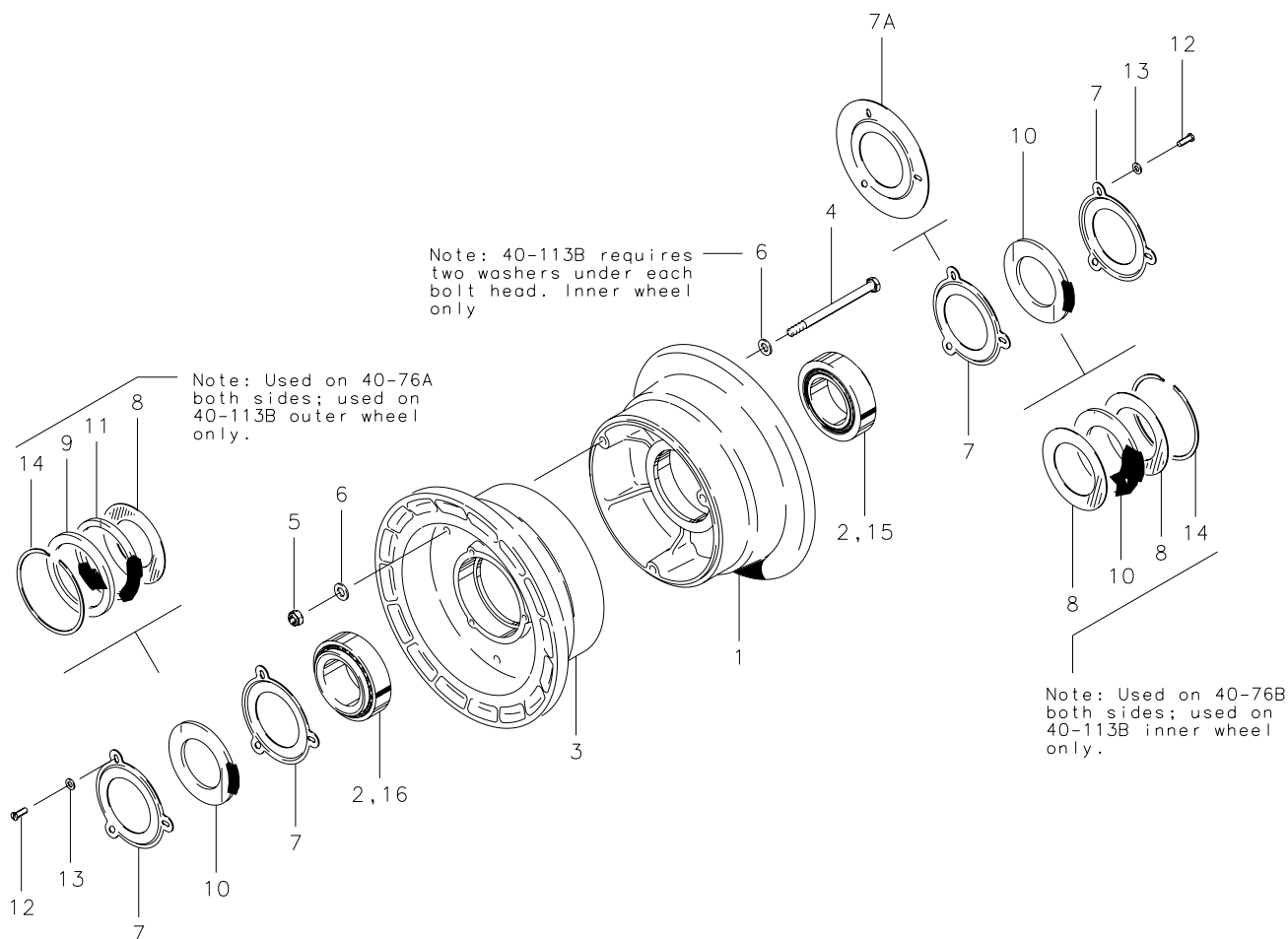


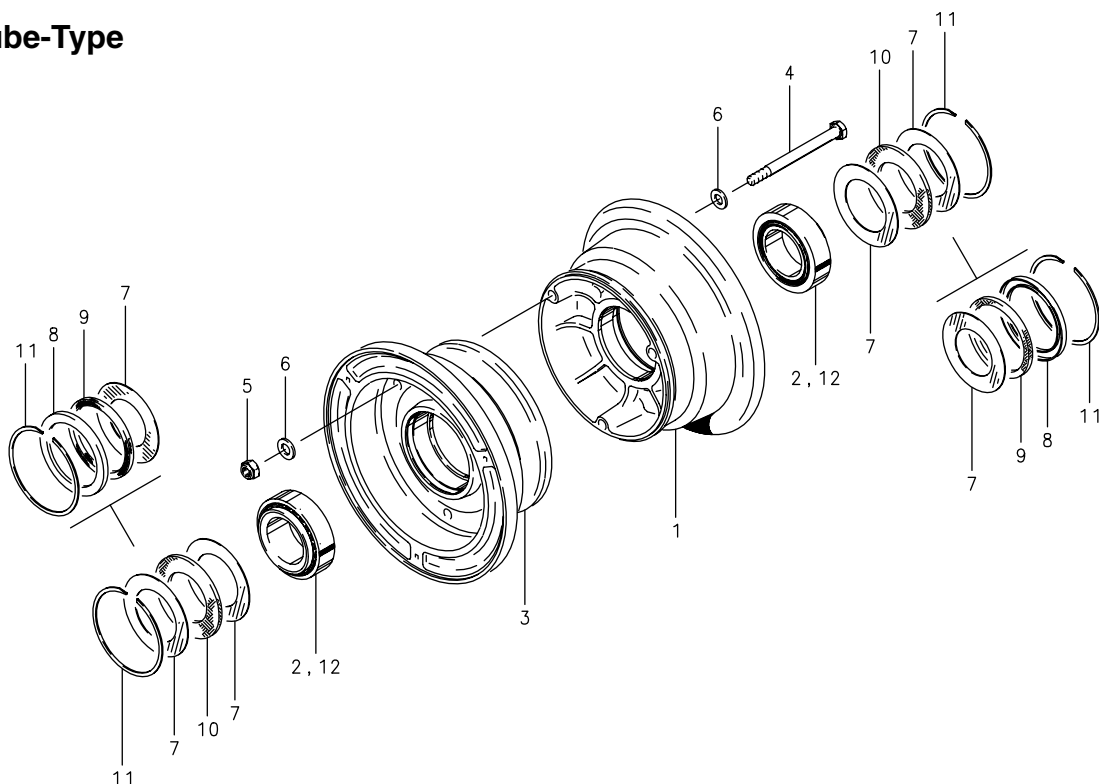
38501 (40-8), 40-30A, 40-55, 40-76A, 40-76B, 40-76C, 40-76P, 40-113B**Tube-Type**

Illustrated Parts List**6.00-6****38501 (40-8), 40-30A, 40-55, 40-76A, 40-76B, 40-76C, 40-76P, 40-113B****Tube-Type**

FIG.	PART NUMBER	DESCRIPTION	PER ASSY.						
			38501 (40-8)	40-30A	40-55 (1) (2)	40-76A (3)	40-76B	40-76C	40-76P
1	161-00800	Inner Wheel Half Assembly	1						
	161-14200	Inner Wheel Half Assembly		1					
	(4)	Inner Wheel Half Assembly			1				
	161-03000	Inner Wheel Half Assembly				1	1	1	
	161-03011	Inner Wheel Half Assembly							1
	161-04900	Inner Wheel Half Assembly							1
2	214-00100	Cup-Bearing	1	1	1	1	1	1	1
3	162-00600	Outer Wheel Half Assembly	1						
	162-13000	Outer Wheel Half Assembly		1					
	(4)	Outer Wheel Half Assembly			1				
	162-02700	Outer Wheel Half Assembly				1	1	1	
	162-04700	Outer Wheel Half Assembly							1
	162-02711	Outer Wheel Half Assembly							1
2	214-00100	Cup-Bearing	1	1	1	1	1	1	1
4	103-11000	Bolt (AN4-36A)	3						3
	103-11200	Bolt (AN4-37A)		3	3				
	103-20400	Bolt (AN4-35A)				3	3	3	3
	094-10300	Nut (MS21044-N4)	3	3	3				3
5	094-10400	Nut (MS21044-N5)				3	3	3	3
	095-10400	Washer (AN960-416)	6	6	6				6
6	095-10500	Washer (AN960-516)				6	6	6	6
	153-00500	Ring-Grease Seal	4						
7	153-01400	Ring-Grease Seal		3					
	153-01000	Ring-Grease Seal			2				
	153-00300	Ring-Grease Seal			2	2		2	1
8	153-00400	Ring-Grease Seal							2
	153-00900	Ring-Grease Seal					4		
9	153-01500	Ring-Grease Seal				2			2
7A	156-00300	Plate-Grease Seal		1					
10	154-00300	Felt-Grease Seal							1
	154-00400	Felt-Grease Seal	1						
	154-00500	Felt-Grease Seal	1						
	154-01200	Felt-Grease Seal		2					
	154-00900	Felt-Grease Seal					4		
	154-01400	Felt-Grease Seal						2	
11	154-01300	Felt-Grease Seal				2		2	2
12	102-05100	Screw (AN500-8-8)	6	6	6				
13	095-15100	Washer-Lock (MS35333-38)		6	6				
	095-15300	Washer-Lock (AN936A8)	6						
14	155-00100	Snap Ring				2	2	2	2
15	214-00200	Cone-Bearing	2	2	2	2	2	2	2

NOTES:

- (1) Inactive assembly – spares support only for parts listed.
- (2) 40-76A supersedes 40-55.
- (3) 40-76A supersedes 40-76H.
- (4) Inactive part – no longer available for spares support.

Illustrated Parts List**Wheel Assembly – Nose****6.00-6****40-56, 40-56B, 40-76D, 40-76E, 40-76F, 40-76G, 40-76H****Tube-Type****Assy. Number**

- A) 40-56
 B) 40-56B
 C) 40-76D
 D) 40-76E
 E) 40-76F
 F) 40-76G
 G) 40-76H

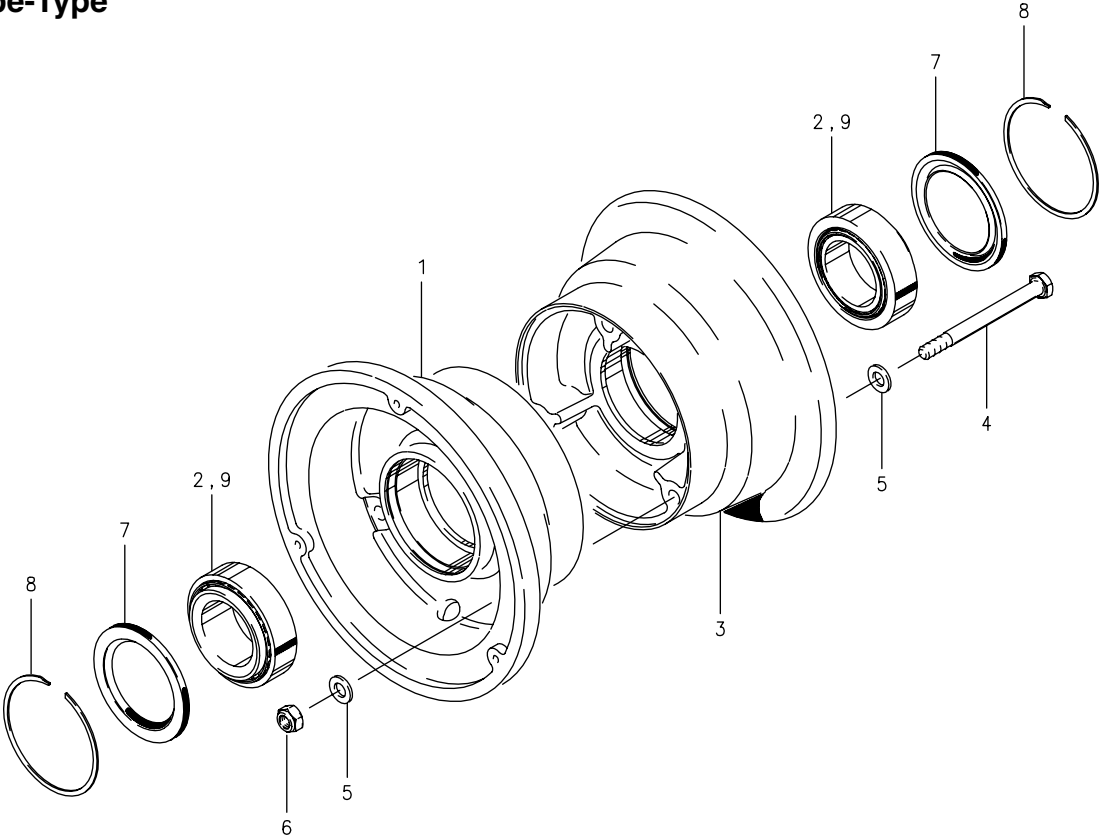
FIG.	PART NUMBER	DESCRIPTION	QTY. PER ASSY.						
			A	B	C	D	E	F	G
1	161-04700	Inner Wheel Half Assy.			1	1	1		
	161-03000	Inner Wheel Half Assy.						1	
	161-08300	Inner Wheel Half Assy.	1						
	161-09400	Inner Wheel Half Assy.		1					
	161-13700	Inner Wheel Half Assy.							1
2	214-00100	Cup-Bearing			1	1	1	1	1
	214-01300	Cup-Bearing	1	1					
3	162-04500	Outer Wheel Half Assy.			1	1	1		
	162-02700	Outer Wheel Half Assy.						1	1
	162-06900	Outer Wheel Half Assy.	1						
	162-08800	Outer Wheel Half Assy.		1					
2	214-00100	Cup-Bearing			1	1	1	1	1
	214-01300	Cup-Bearing	1	1					
4	103-20400	Bolt (AN5-35A)			3	3	3	3	3
	103-21800	Bolt (AN5-34A)	3	3					
5	094-10400	Nut (MS21044-N5)	3	3	3	3	3		3
6	095-10500	Washer (AN960-516)	6	6	6	6	6	6	6
7	153-00300	Ring-Grease Seal			2	2		1	2
	153-00900	Ring-Grease Seal	4	4			4		
	153-00400	Ring-Grease Seal						2	
8	153-01500	Ring-Grease Seal			2	2		1	2
9	154-00300	Felt-Grease Seal						1	
10	154-01400	Felt-Grease Seal	2	2			2		
	154-01300	Felt-Grease Seal			2	2		1	2
11	155-00100	Snap Ring	2	2	2	2	2	2	2
12	214-00200	Cone Bearing			2	2	2	2	2
	214-01400	Cone Bearing	2	2					

Cleveland
 Wheels & Brakes



40-56C

Tube-Type



Assy. Number

A) 40-56C

FIG.	PART NUMBER	DESCRIPTION	QTY. PER ASSY.
			A
1	161-08300	Inner Wheel Half Assy.	1
2	214-01300	Cup-Bearing	1
3	162-06900	Outer Wheel Half Assy.	1
2	214-01300	Cup-Bearing	1
4	103-21800	Bolt (AN5-34A)	3
5	095-10500	Washer (AN960-516)	6
6	094-10400	Nut (MS21044-N5)	3
7	154-03000	Molded-Grease Seal	2
8	155-00100	Snap Ring	2
9	214-01400	Cone-Bearing	2

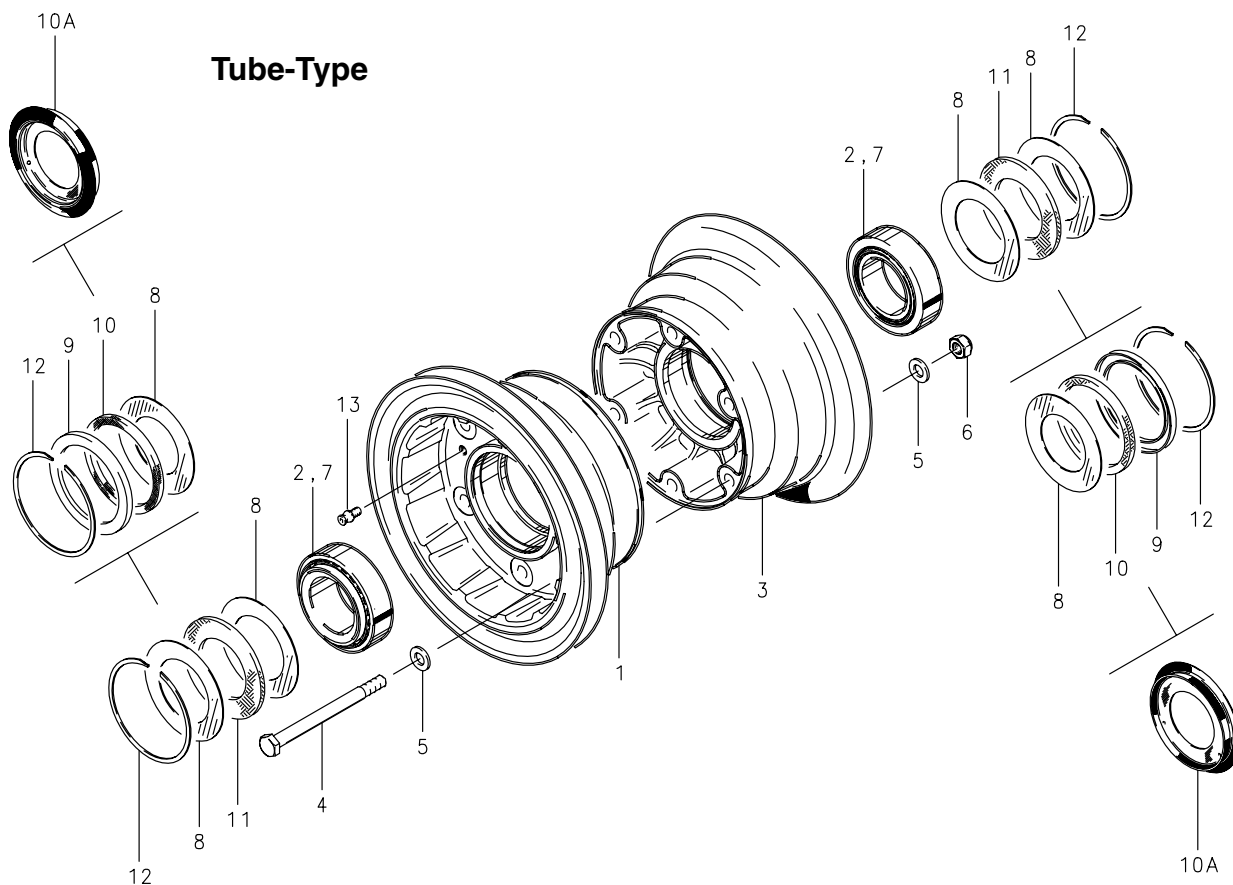
Illustrated Parts List**Wheel Assembly – Nose****6.00-6****40-120A, 40-140, 40-140A, 40-140C****Assy. Number****A) 40-120A****B) 40-140****C) 40-140A****D) 40-140C**

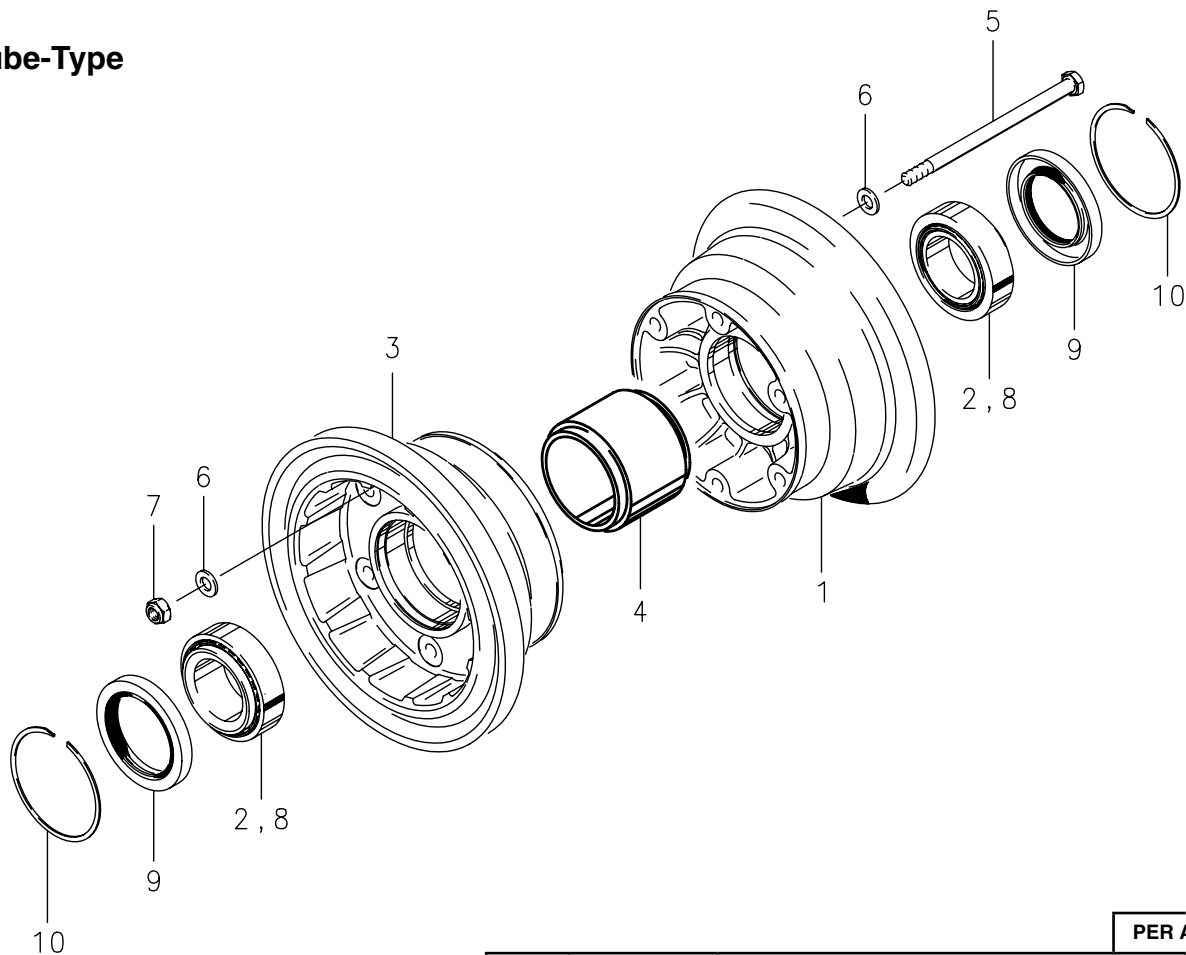
FIG.	PART NUMBER	DESCRIPTION	QTY. PER ASSY.			
			A	B	C	D
1	161-08200	Inner Wheel Half Assy.		1	1	
	161-08202	Inner Wheel Half Assy.				1
	161-09302	Inner Wheel Half Assy.	1			
2	214-00100	Cup-Bearing	1	1	1	
	214-01100	Cup-Bearing				1
3	162-07700	Outer Wheel Half Assy.		1	1	
	162-07702	Outer Wheel Half Assy.				1
	162-08702	Outer Wheel Half Assy.	1			
2	214-00100	Cup-Bearing	1	1	1	
	214-01100	Cup-Bearing				1
4	103-20400	Bolt (AN5-35A)	6	6	6	6
5	095-10500	Washer (AN960-516)				12
	095-10700	Washer (AN960-516L)	12	12	12	
6	094-10401	Nut (MS21045-5S)				6
	094-10400	Nut (MS21044-N5)	6	6	6	
7	214-00200	Cone-Bearing	2	2	2	
	214-01200	Cone-Bearing				2
8	153-00300	Ring-Grease Seal			2	
	153-00900	Ring-Grease Seal	4	4		
9	153-01500	Ring-Grease Seal			2	
10	154-01300	Felt-Grease Seal			2	
10A	154-07500	Grease Seal				2
11	154-01400	Felt-Grease Seal	2	2		
12	155-00100	Snap Ring	2	2	2	
13	213-00400	Grease Fitting (MS15720-1)				1

Cleveland
Wheels & Brakes



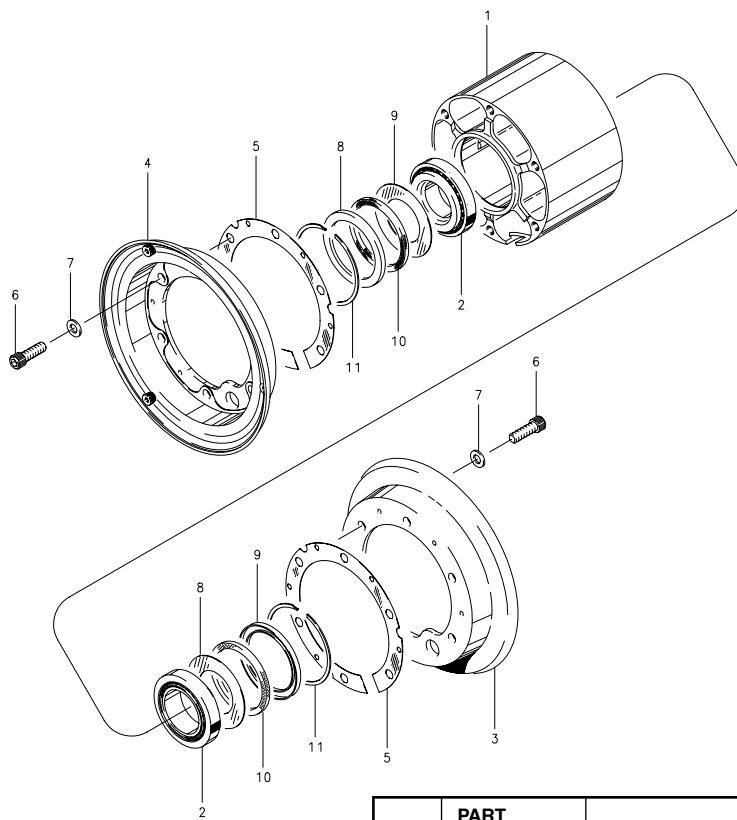
40-426, 40-426A

Tube-Type



NOTES:
(1) High corrosion resistant, amphibious equipment.

			PER ASSY.	
FIG.	PART NO.	DESCRIPTION	40-426 (1)	40-426A
1	161-19901	Inner Wheel Half Assembly	1	
	161-19904	Inner Wheel Half Assembly		1
2	214-01100	Cup-Bearing (chrome plated)	1	
	214-00100	Cup-Bearing		1
3	162-19901	Outer Wheel Half Assembly	1	
	162-19904	Outer Wheel Half Assembly		1
2	214-01100	Cup-Bearing (chrome plated)	1	
	214-00100	Cup-Bearing		1
4	067-14700	Grease Dam Spacer	1	1
5	103-20400	Bolt (AN5-35A)	6	6
6	095-10500	Washer (AN960-516)	12	12
7	094-10400	Nut (MS21044-N5)	6	6
8	214-01200	Cone-Bearing (chrome plated)	2	
	214-00200	Cone-Bearing		2
9	154-08300	Molded Grease Seal	2	2
10	155-14300	Snap Ring	2	2

Illustrated Parts List**Wheel Assembly – Nose****6.00-6****C-30179, D-30204, D-30255, D-30570, D-30585****Tube-Type****Assy. Number****A) C-30179 (1)****B) D-30204 (1) (2)****C) D-30255 (1) (2)****D) D-30570 (1)****E) D30585 (1) (2)****NOTES:**

- (1) Inactive assembly – spares support only for parts listed.
- (2) Superseded by D-30665 (5).
- (3) Inactive part – no longer available for spares support.
- (4) All wheel assemblies listed were formerly manufactured by "McCauley Industrial Corporation."
- (5) D-30665 is inactive. See Airframe manufacturer for approved replacement.

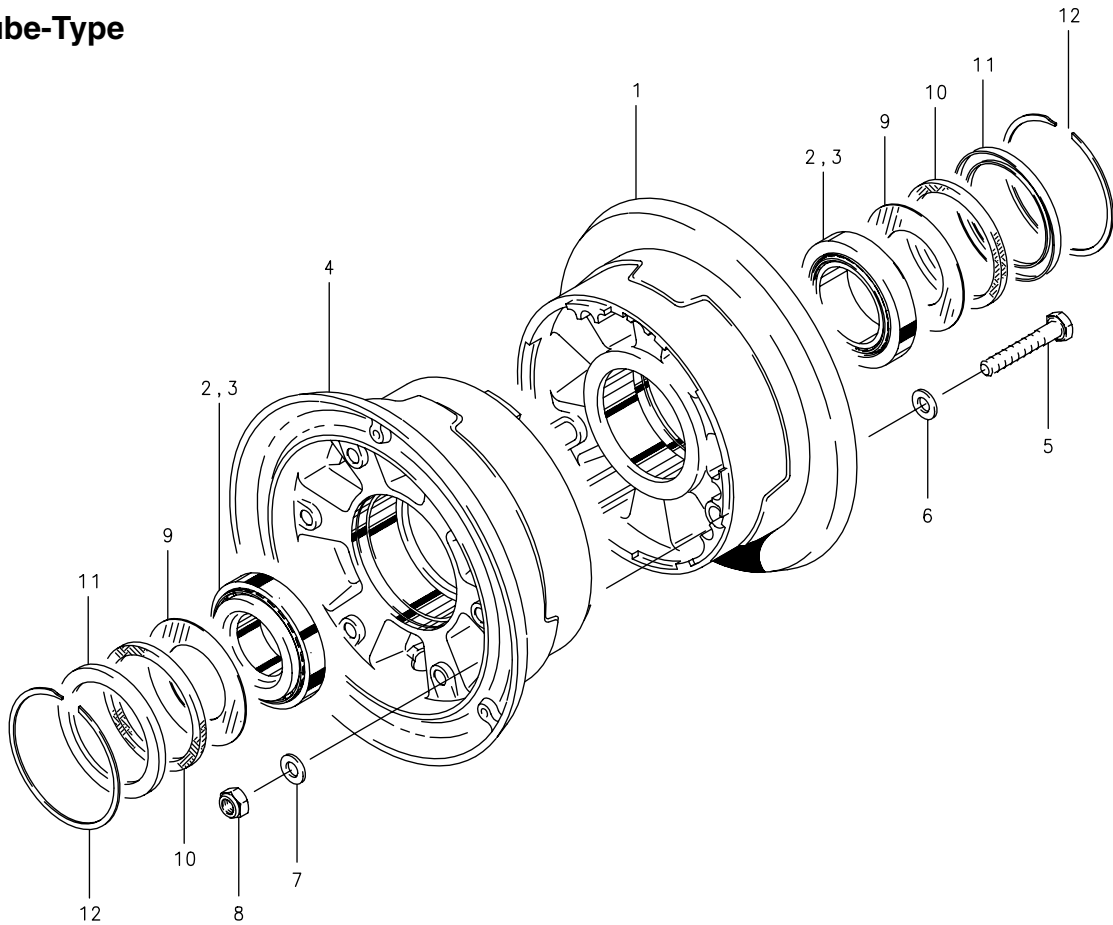
* Not illustrated.

FIG.	PART NUMBER	DESCRIPTION	QTY. PER ASSY				
			A	B	C	D	E
1	201-30203	Hub Assy.	1				
	(3)	Hub Assy.		1			
	201-30256-1	Hub Assy.			1		1
	201-30568	Hub Assy.				1	
2	(3)	Bearing	2	2	2		2
	(3)	Bearing				2	
3	(3)	Wheel Flange	1				
	(3)	Wheel Flange		1			
	(3)	Wheel Flange			1		
	(3)	Wheel Flange				1	
	(3)	Wheel Flange					1
	(3)	Wheel Flange	1				
4	(3)	Wheel Flange		1			
	(3)	Wheel Flange			1		
	(3)	Wheel Flange				1	
	(3)	Wheel Flange					1
5	067-30076	Spacer	2	2	2	2	2
	(3)	Screw	12				
6	(3)	Bolt (AN4-41A)		6			
	(3)	Screw			12		12
	102-18400	Screw					12
	095-10500	Washer (AN960-516)	12			12	
7	(3)	Washer		12			
	(3)	Washer			12		12
8	153-30014	Ring	2	2	2	2	2
9	153-30015	Ring	2	2	2	2	2
10	154-30010	Felt	2	2	2	2	2
11	155-11900	Snap Ring	2	2		2	
	155-11800	Snap Ring			2		2
*	094-15300	Nut		6			

Cleveland
 Wheels & Brakes


D-30665, D-30665-1

Tube-Type



Assy. Number

A) D-30665 (2) (3)

B) D-30665-1 (2) (3)

NOTES:

- (1) All wheel assemblies listed were formerly manufactured by "McCauley Industrial Corporation."
- (2) Inactive assembly – spares support only for parts listed.
- (3) Inactive. See Airframe manufacturer for approved replacement.
- (4) Inactive part – no longer available for spares support.

FIG.	PART NUMBER	DESCRIPTION	QTY. PER ASSY.	
			A	B
1	(4)	Inner Wheel Half Assy.	1	
	(4)	Inner Wheel Half Assy.		1
2	214-01300	Cup-Bearing	1	1
3	214-01400	Cone-Bearing	2	2
4	(4)	Outer Wheel Half Assy.	1	
	(4)	Outer Wheel Half Assy.		1
2	214-01300	Cup-Bearing	1	1
5	103-25900	Bolt	3	
	103-17200	Bolt		6
6	095-10500	Washer (AN960-516)		12
	095-02800	Washer (MS20002C5)	3	
7	095-02800	Washer (MS20002C5)	3	
	095-10700	Washer (AN960-516L)		12
8	094-15100	Nut	3	6
9	153-30015	Ring	2	2
10	154-30010	Felt	2	2
11	153-30014	Ring	2	2
12	155-11900	Snap Ring	2	2