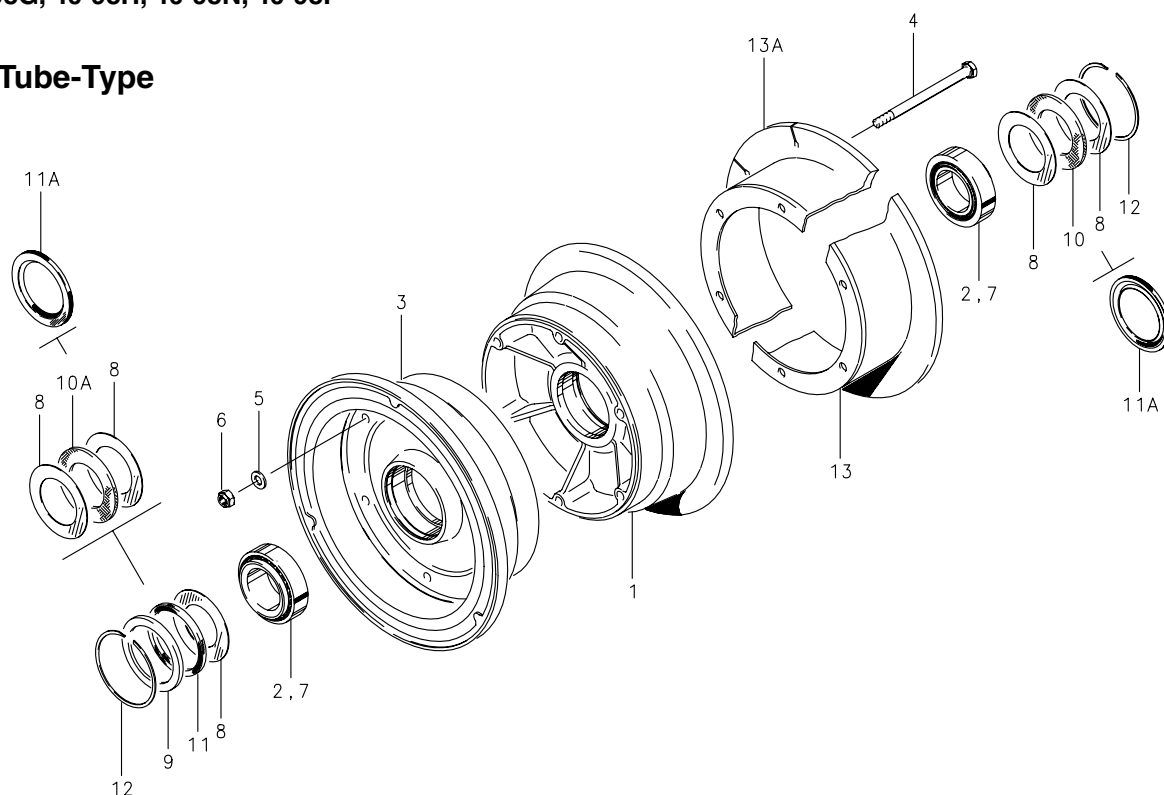


Illustrated Parts List**Wheel Assembly – Main, External
7.00-8**

40-98, 40-98A, 40-98D, 40-98E, 40-98F,
40-98G, 40-98H, 40-98N, 40-98P

Tube-Type**Assy. Number**

- A) 40-98
B) 40-98A
C) 40-98D
D) 40-98E
E) 40-98F
F) 40-98G
G) 40-98H
H) 40-98N (1)
I) 40-98P

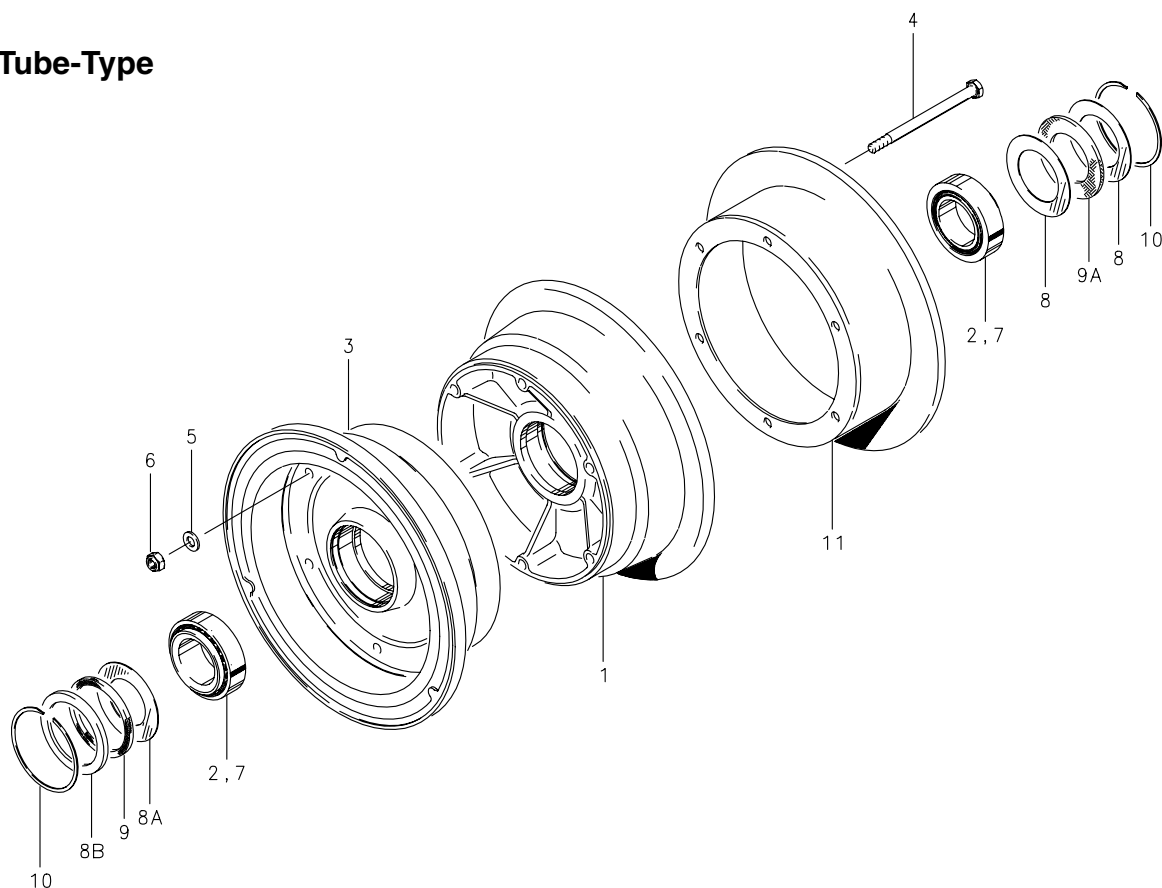
NOTES:

- (1) Inactive assembly – spares support only for parts listed.

FIG.	PART NUMBER	DESCRIPTION	QTY. PER ASSY.								
			A	B	C	D	E	F	G	H	I
1	161-02300	Inner Wheel Half Assy.	1	1	1			1		1	1
	161-05300	Inner Wheel Half Assy.				1	1				
	161-02311	Inner Wheel Half Assy.							1		
2	214-00100	Cup-Bearing	1	1	1	1	1	1	1	1	1
3	162-02100	Outer Wheel Half Assy.	1					1			1
	162-08500	Outer Wheel Half Assy.							1		
	162-04800	Outer Wheel Half Assy.		1	1					1	
	162-05100	Outer Wheel Half Assy.				1	1				
2	214-00100	Cup-Bearing	1	1	1	1	1	1	1	1	1
4	103-20400	Bolt (AN5-35A)	6	6	6	6	6	6	6	6	6
5	095-10500	Washer (AN960-516)	6	6	6	6	6	6	6	6	6
6	094-10400	Nut (MS21044-N5)	6	6	6	6	6	6	6	6	6
7	214-00200	Cone-Bearing	2	2	2	2	2	2	2	2	2
8	153-00900	Ring-Grease Seal	2			2					2
	153-00300	Ring-Grease Seal	1	1		1	1		1	1	1
	153-00400	Ring-Grease Seal		2			2		2	2	
	153-01600	Ring-Grease Seal			4						
9	153-01500	Ring-Grease Seal	1	1		1	1		1	1	1
10	154-00300	Felt-Grease Seal		1	1		1		1	1	
10A	154-01400	Felt-Grease Seal	1		1	1					1
11	154-01300	Felt-Grease Seal	1	1		1	1		1	1	1
11A	154-03000	Molded Grease Seal						2			
12	155-00100	Snap-Ring	2	2	2	2	2	2	2	2	2
13	164-02706	Brake Disc	1				1	1			
	164-02707	Brake Disc		1	1					1	
	164-05006	Brake Disc				1					
13A	164-08406	Brake Disc (Slotted)							1		1

Cleveland
Wheels & Brakes



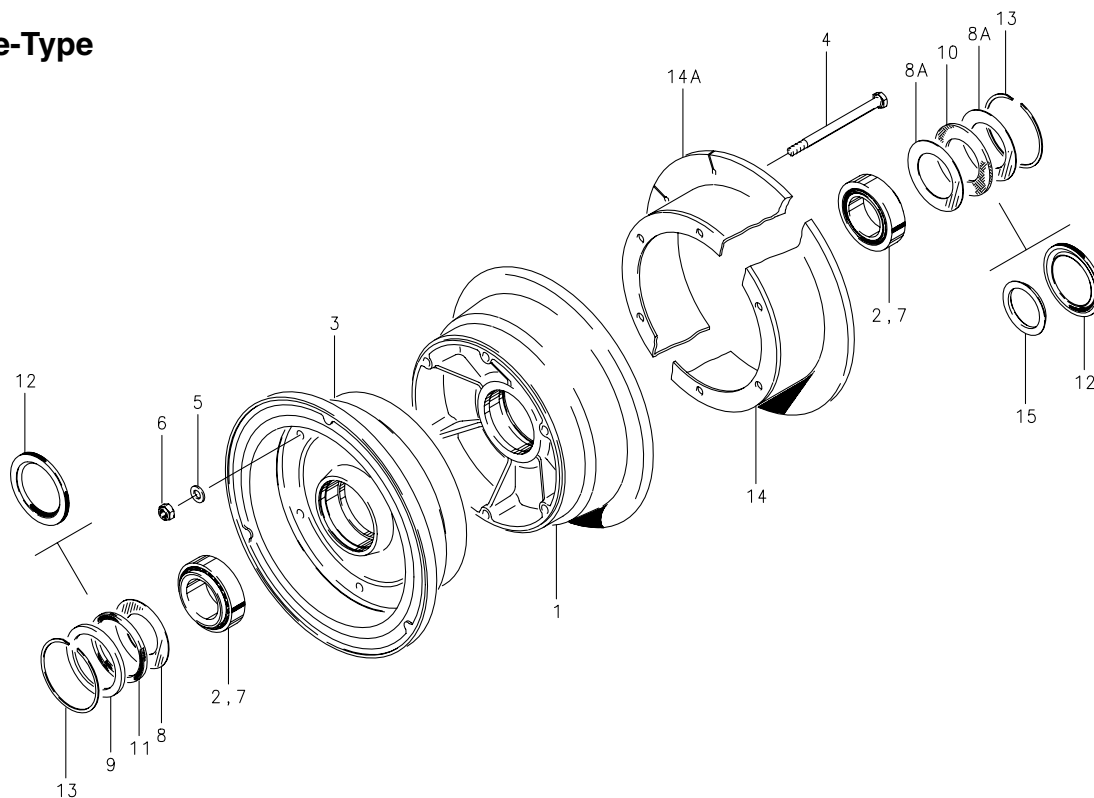
Illustrated Parts List**Wheel Assembly – Main, External
7.00-8****40-111, 40-111A****Tube-Type****Assy. Number****A) 40-111 (1) (3)****B) 40-111A****NOTES:**

- (1) Inactive assembly – spares support only for parts listed.
- (2) Inactive part – no longer available for spares support.
- (3) 40-111 superseded by 40-111A.

FIG.	PART NUMBER	DESCRIPTION	QTY. PER ASSY.	
			A	B
1	(2)	Inner Wheel Half Assy.	1	
	161-06401	Inner Wheel Half Assy.		1
2	214-00100	Cup-Bearing	1	1
3	(2)	Outer Wheel Half Assy.	1	
	162-06001	Outer Wheel Half Assy.		1
2	214-00100	Cup-Bearing	1	1
4	103-20400	Bolt (AN5-35A)	6	6
5	095-10500	Washer (AN960-516)	6	6
6	094-10400	Nut (MS21044-N5)	6	6
7	214-00200	Cone-Bearing	2	2
8	153-00900	Ring-Grease Seal	2	2
8A	153-00300	Ring-Grease Seal	1	1
8B	153-01500	Ring-Grease Seal	1	1
9	154-01300	Felt-Grease Seal	1	1
9A	154-01400	Felt-Grease Seal	1	1
10	155-00100	Snap Ring	2	2
11	164-06506	Brake Disc	1	1
	067-03400	Axle Spacer (not shown)	1	1

Cleveland
Wheels & Brakes



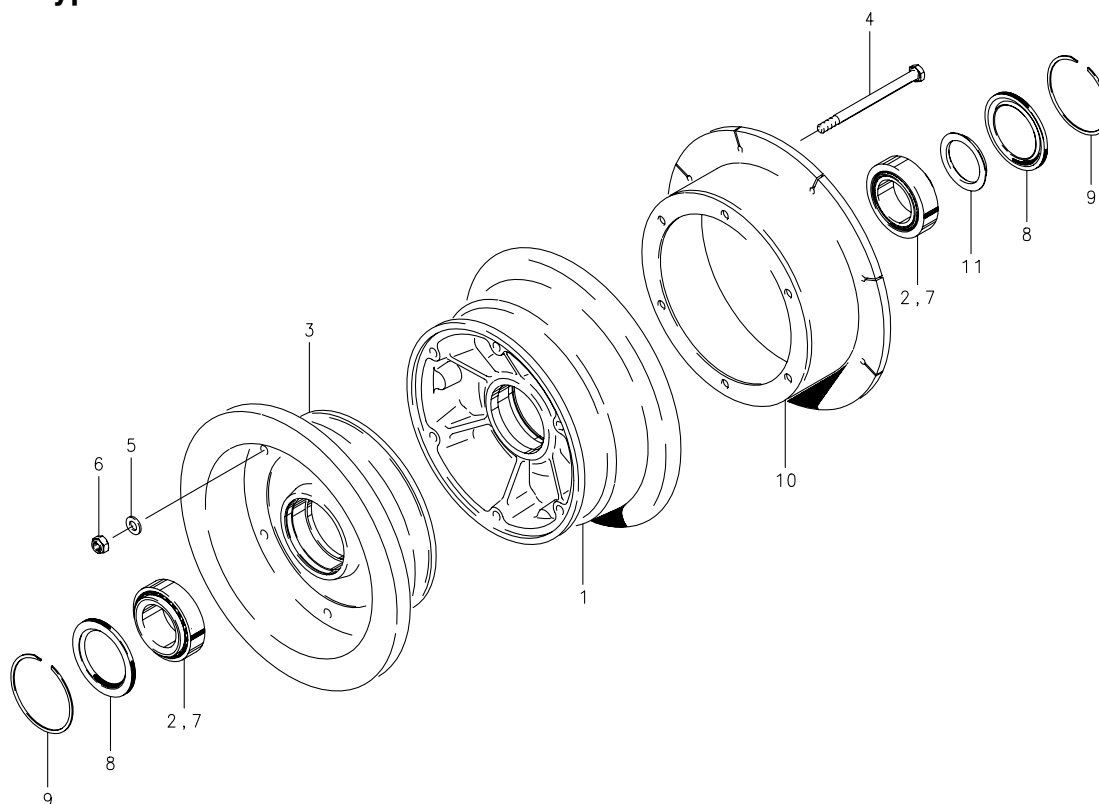
Illustrated Parts List**Wheel Assembly – Main, External
7.00-8****40-124, 40-128, 40-128C, 40-128D, 40-128E****Tube-Type****Assy. Number****A) 40-124****B) 40-128****C) 40-128C****D) 40-128D****E) 40-128E**

* Note dust shield and
attaching hardware not
shown in illustration.

FIG.	PART NUMBER	DESCRIPTION	QTY. PER ASSY.				
			A	B	C	D	E
1	161-02301	Inner Wheel Half Assy.		1		1	
	161-05300	Inner Wheel Half Assy.	1		1		1
2	214-00100	Cup-Bearing	1	1	1	1	1
3	162-02101	Outer Wheel Half Assy.		1		1	
	162-05100	Outer Wheel Half Assy.	1		1		
	162-04800	Outer Wheel Half Assy.					1
2	214-00100	Cup-Bearing	1	1	1	1	1
4	103-21700	Bolt	6	6	6	6	6
5	095-10500	Washer (AN960-516)	6	6	6	6	
	095-10700	Washer (AN960-516L)					6
6	094-10400	Nut-Lock (MS21044-N5)	6	6	6	6	6
7	214-00200	Cone-Bearing	2	2	2	2	2
8	153-00300	Ring-Grease Seal	1	1	1		1
	153-00400	Ring-Grease Seal					2
8A	153-00900	Ring-Grease Seal	2	2	2		
9	153-01500	Ring-Grease Seal	1	1	1		1
10	154-01400	Felt-Grease Seal	1	1	1		
	154-00300	Felt-Grease Seal					1
11	154-01300	Felt-Grease Seal	1	1	1		1
12	154-03000	Molded Grease Seal				2	
13	155-00100	Snap Ring	2	2	2	2	2
14	164-05006	Brake Disc	1		1		
	164-23300	Brake Disc					1
14A	164-06106	Brake Disc (Slotted)		1		1	
15	067-03400	Axle Spacer		1		1	
*	102-00600	Screw					3
*	157-01000	Dust Shield					1
*	095-15100	Washer (MS35333-38)					3

Cleveland
Wheels & Brakes



40-171**Tube-Type****Assy. Number**

A) 40-171

FIG.	PART NUMBER	DESCRIPTION	QTY. PER ASSY.
			A
1	161-10300	Inner Wheel Half Assy.	1
2	214-00100	Cup-Bearing	1
3	162-09500	Outer Wheel Half Assy.	1
2	214-00100	Cup-Bearing	1
4	103-21700	Bolt	6
5	095-10500	Washer (AN960-516)	6
6	094-10400	Nut (MS21044-N5)	6
7	214-00200	Cone Bearing	2
8	154-03000	Molded Grease Seal	2
9	155-00100	Snap Ring	2
10	164-20806	Brake Disc (Slotted)	1
11	067-03400	Axle Spacer	1