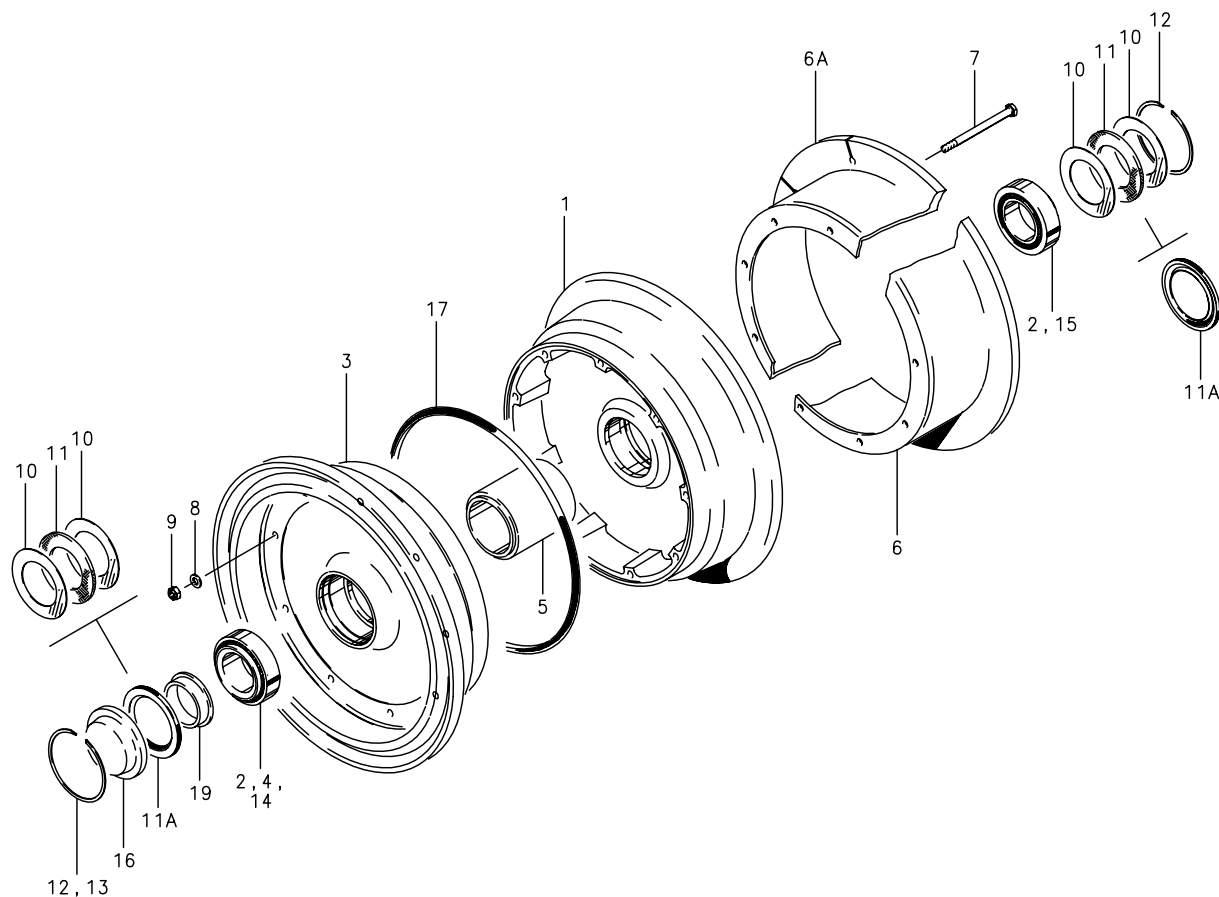


Illustrated Parts List**Wheel Assembly – Main, External
7.50-10**

40-101, 40-101A, 40-101D, 40-101E, 40-129,
40-134, 40-134A, 40-179, 40-179A, 40-223, 40-234

Tube-Type

Cleveland
Wheels & Brakes



Illustrated Parts List

40-101, 40-101A, 40-101D, 40-101E, 40-129,
40-134, 40-134A, 40-179, 40-179A, 40-223, 40-234

Tube-Type

FIG.	PART NUMBER	DESCRIPTION	QTY. PER ASSY.										
			A	B	C	D	E	F	G	H	I	J	K
1	161-03600	Inner Wheel Half Assy.	1	1		1						1	
	161-03601	Inner Wheel Half Assy.			1								
	161-05700	Inner Wheel Half Assy.					1						
	161-06300	Inner Wheel Half Assy.						1	1				
	161-12800	Inner Wheel Half Assy.								1	1		
2	214-01300	Cup-Bearing	1	1		1	1	1	1	1	1	1	1
	214-30795-1	Cup-Bearing			1								
3	162-03400	Outer Wheel Half Assy.	1	1		1						1	1
	162-03401	Outer Wheel Half Assy.			1								
	162-05400	Outer Wheel Half Assy.					1						
	162-05900	Outer Wheel Half Assy.						1	1				
	162-11800	Outer Wheel Half Assy.								1	1		
4	214-00900	Cup-Bearing					1	1	1				
2	214-01300	Cup-Bearing	1	1		1				1	1	1	1
	214-30795-1	Cup-Bearing			1								
5	067-00600	Spacer					1	1	1				
	067-06300	Spacer	1	1	1	1				1	1	1	1
6	164-03006	Brake Disc	1		1	1							
	164-03106	Brake Disc		1								1	
	164-05606	Brake Disc					1						1
6A	164-22201	Brake Disc (Slotted)								1	1		
	164-06306	Brake Disc (Slotted)						1	1				
7	103-11300	Bolt (AN4-40A)	9	9	9	9	9					9	9
	103-20800	Bolt (AN5-41A)						9	9				
	103-22300	Bolt (AN5-40A)								9	9		
8	095-10400	Washer (AN960-416)	9	9	9	9	9					9	9
	095-10500	Washer (AN960-516)						9	9	9	9		
9	094-10300	Nut (MS21044-N4)	9	9	9	9	9					9	9
	094-10400	Nut (MS21044-N5)						9	9	9	9		
10	153-00900	Ring-Grease Seal	2	2	2	2						4	2
	153-01600	Ring-Grease Seal					2	2	2				
11	154-01400	Felt-Grease Seal	1	1	1	1						2	1
	154-01600	Felt-Grease Seal					1	1	1				
11A	154-03000	Molded Grease Seal								2	1		
12	155-00100	Snap Ring	2	2	2	2	1	1	1	2	2	2	2
13	155-00600	Snap Ring					1	1	1				
14	214-01000	Cone-Bearing					1	1	1				
	214-30795-2	Cone-Bearing			2								
15	214-01400	Cone-Bearing	2	2		2	1	1	1	2	2	2	2
16	158-00300	Hub Cap	1	1	1								1
	158-00800	Hub Cap					1	1					
	158-01400	Hub Cap Assy.							1				
	158-02000	Hub Cap				1					1		
17	101-09700	O-Ring (MS28775-269)						1	1				
18	160-00900	Air Valve Assy.						1	1				
19	067-06700	Spacer (Outboard)								1	1		

Assy. Number

A) 40-101

B) 40-101A (3)

C) 40-101D

D) 40-101E

E) 40-129

F) 40-134 (1) (2)

G) 40-134A (1) (2)

H) 40-179

I) 40-179A

J) 40-223

K) 40-234 (3)

NOTES:

- (1) Wheel size is 24 x 7.7; also suitable to use 7.50-10 and 8.50-10 tires.
- (2) Tubeless/Tube-Type convertible wheel.
- (3) This wheel is not FAA TSO approved – order from airframe manufacturer only.