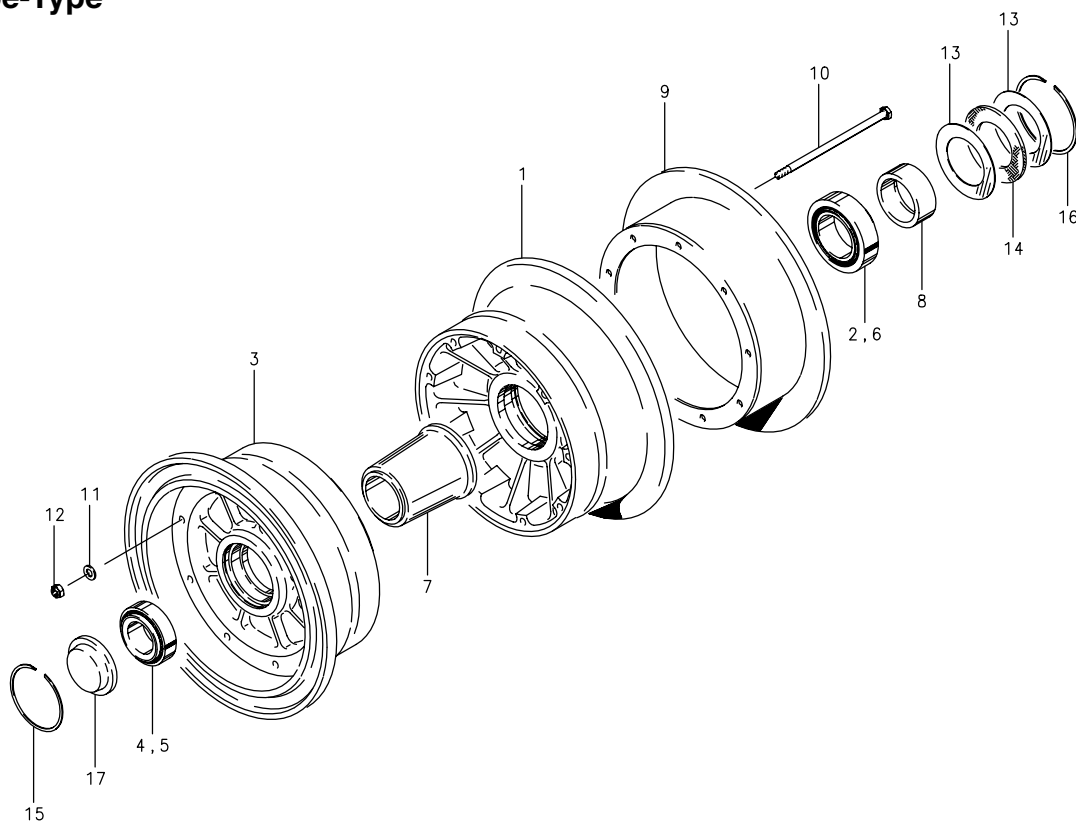


**Illustrated Parts List****Wheel Assembly – Main, External****29 x 11.00-10****40-133, 40-139, 40-175, 40-403****Tube-Type****Assy. Number****A) 40-133****B) 40-139 (1)****C) 40-175****D) 40-403****NOTES:**

- (1) This wheel is not FAA TSO approved – order from airframe manufacturer only.

FIG.	PART NUMBER	DESCRIPTION	QTY. PER ASSY.			
			A	B	C	D
1	161-06200	Inner Wheel Half Assy.	1		1	1
	161-07900	Inner Wheel Half Assy.		1		
2	214-03000	Cup-Bearing	1	1	1	
3	162-05800	Outer Wheel Half Assy.	1		1	1
	162-07400	Outer Wheel Half Assy.		1		
4	214-00700	Cup-Bearing	1	1	1	
5	214-00800	Cone-Bearing	1	1	1	1
6	214-03100	Cone-Bearing	1	1	1	1
7	067-03500	Spacer	1	1	1	1
8	067-03700	Axle Spacer	1		1	
9	164-05806	Brake Disc	1			
	164-07306	Brake Disc		1		
	164-21100	Brake Disc			1	
	164-22202	Brake Disc				1
10	103-21500	Bolt (AN5-71A)	9		9	9
	103-21900	Bolt (AN5-65A)		9		
11	095-10500	Washer (AN960-516)	9	9	9	9
12	094-10400	Nut (MS21044-N5)	9	9	9	9
13	153-02000	Ring-Grease Seal	2	2	2	2
14	154-02700	Felt-Grease Seal	1	1	1	1
15	155-04400	Snap Ring	1	1	1	1
16	155-04500	Snap Ring	1	1	1	1
17	158-01300	Hub Cap	1	1	1	1

**Cleveland**  
Wheels & Brakes

