

# Guang Her Cheng Electronics Industrial Co., Ltd

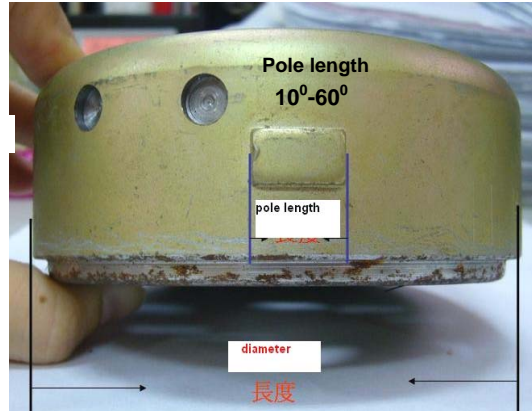
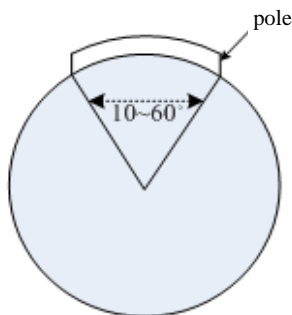
No.47-3, Chung Cheng Rd, Tahu Village, Tahuhsiang, Miaolihsien, Taiwan.  
 Tel: 886-37991847, Fax: 886-37991845 Web: www.ghc.en.alibaba.com; www.shoneche.com;  
 Email: sophina\_ghc@163.com; ghc-export@taiwanghc.com.cn;

## Ignition Timing Adjustable DC CDI & Coil PX-03

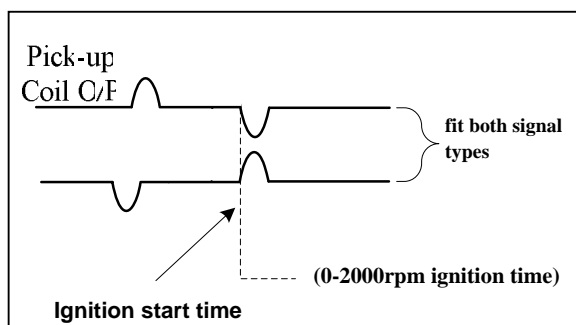
Model: PX-03

### Specifications :

1. Fits revolution speed 300~15000rpm
2. Applied voltage: 9-16v
3. Operation Temperature: -20℃ ~ +40℃
4. Fitted ACG : pole length 10°-60°  
see picture

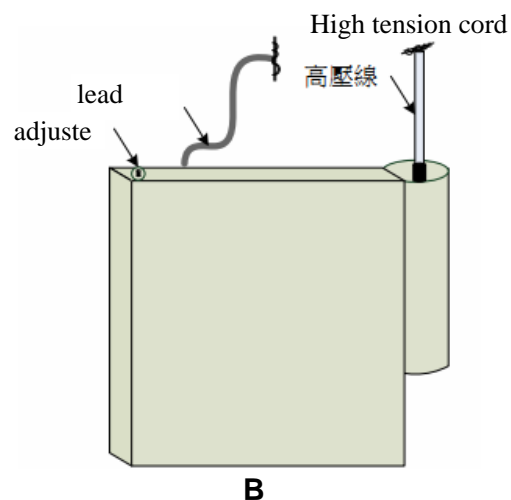
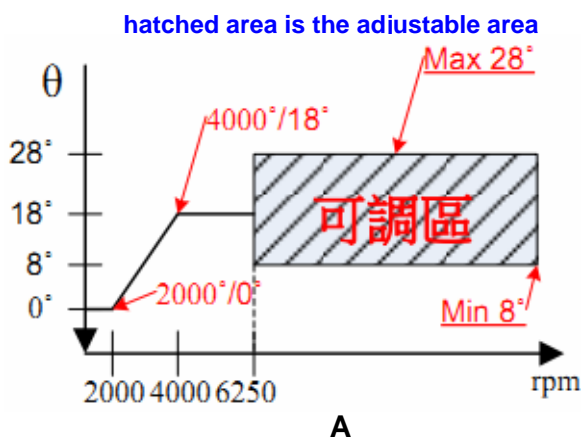


### 5. Fits trigger coil (pickup coil) signal:

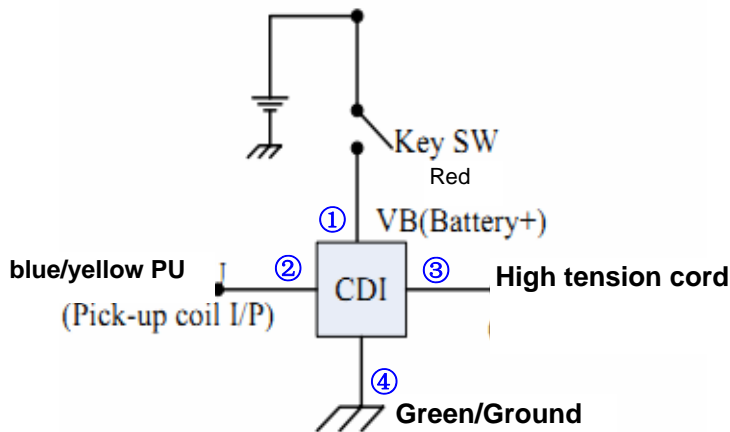


### 6. Features of setting

- A: Ignition timing adjustable by  $\pm 10^\circ$
- B: RPM adjustable ranges 6250-10500rpm see below A drawing.
- C: advance or delay timing adjuster screw (see below B drawing )
- D: Combine original CDI or replacement



## 7. Wiring Diagram

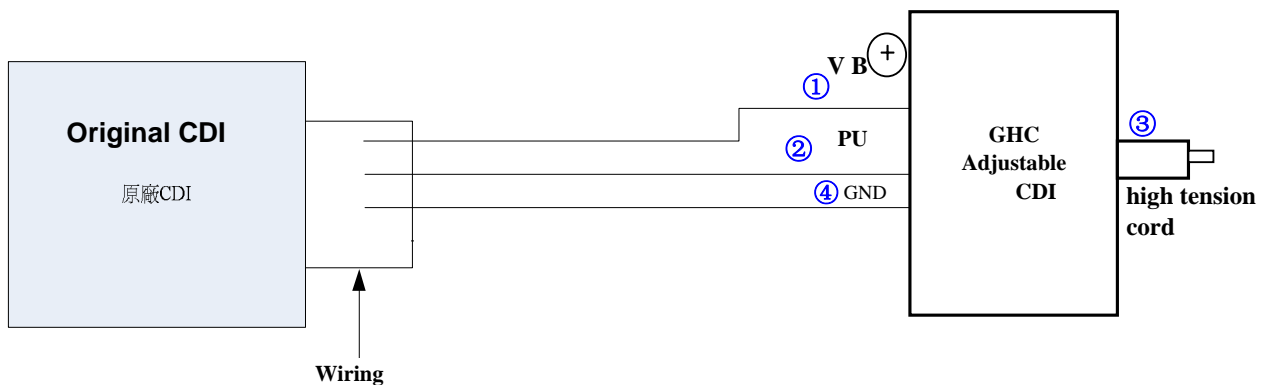


## 8. Warning:

- 1). Not allowed to use it if over applied voltage and temperature .
- 2). This products is refitting parts , incorrect adjusting might damage engine .
- 3). if you need special function, please specify for our seperate development.
- 4). Incorrect wiring match might damage product !

## 9. Combine original CDI connection method

Some Original factory CDI is with multifunctions like controlling other devices such as Headlight relay coil, Stand by Switch etc, to combine our CDI, the connection method as below diagram ( if it is just a common original CDI, replace whole CDI directly)



**Remarks:** apply this model CDI, user have to remove the original ignition coil