

# Guang Her Cheng Electronics Industrial Co., Ltd

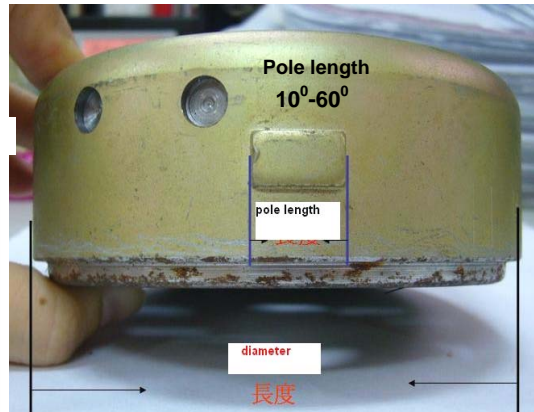
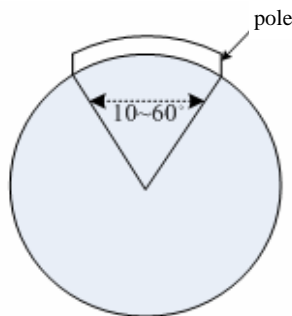
No.47-3, Chung Cheng Rd, Tahu Village, Tahuhsiang, Miaolihsien, Taiwan.  
 Tel: 886-37991847, Fax: 886-37991845 Web: www.ghc.en.alibaba.com; www.shoneche.com;  
 Email: sophina\_ghc@163.com; ghc-export@taiwanghc.com.cn;

## Adjustable Ignition Timing AC CDI PX-31

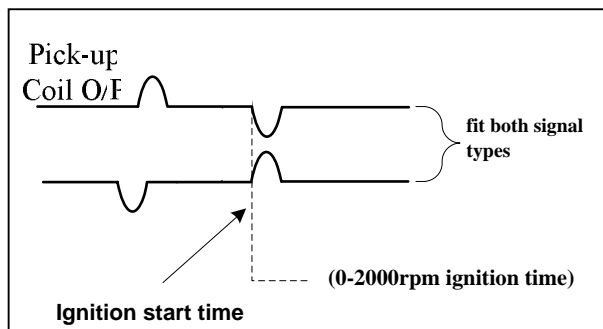
Model: PX-31

### Specifications :

1. Fits revolution speed 300~15000rpm
2. Applied voltage: 9-16v
3. Operation Temperature: -20℃ ~ +40℃
4. Fitted ACG : pole length 10°-60°  
see picture

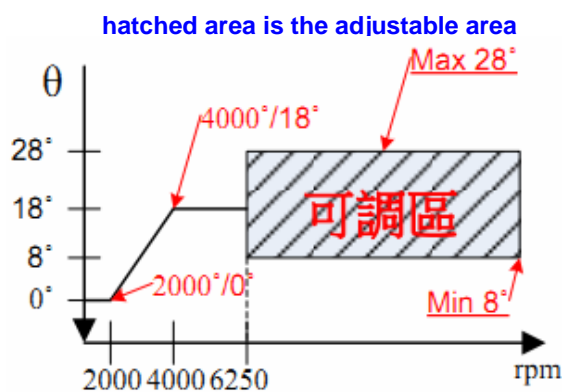


### 4. Fits trigger coil (pickup coil) signal:

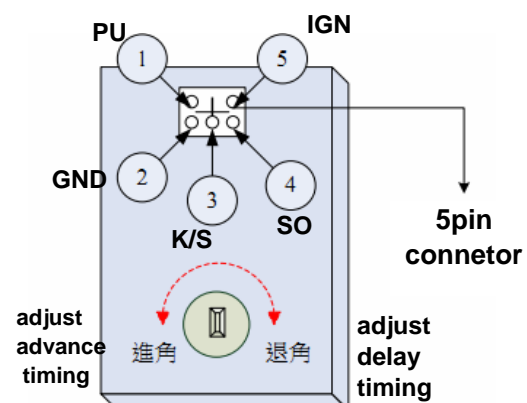


### 5. Features of setting

- A: Ignition timing adjustable by  $\pm 10^\circ$
- B: RPM adjustable ranges 6250-10500rpm see below A drawing.
- C: advance or delay timing adjuster screw (see below B drawing )
- D: Combine original CDI or replacement

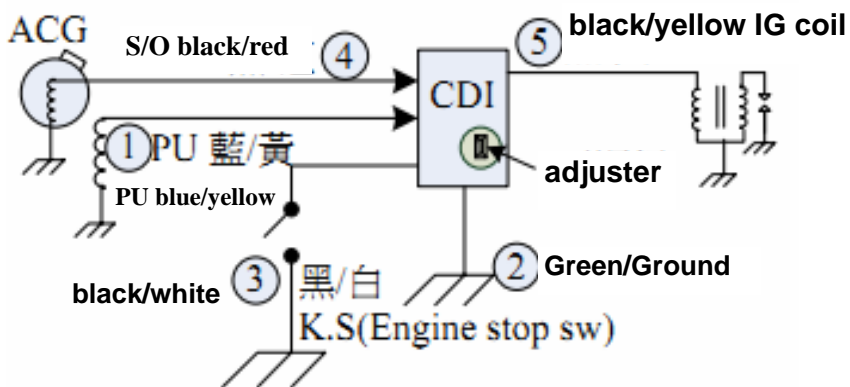


A



B


## 6. Wiring Diagram



## 7. Warning:

- 1). Not allowed to use it if over applied voltage and temperature .
- 2). This products is refitting parts , incorrect adjusting might damage engine .
- 3). if you need special function, please specify for our separte development.
- 4). Incorrect wiring match might damage product !

## 8. Combine original CDI connection method

- 1) Some Original factory CDI is with multifunctions like controlling other devices such as Headlight relay coil, Stand by Switch etc, to combine our CDI, the connection method as below diagram ( if it is just a common original CDI, replace whole CDI directly)
- 2) Cut the OUT PUT to coil SEE the marking  n below drawing.
- 3) Connect Battery B+, Ground, Pick-up coil I/P and IGN then completed.

