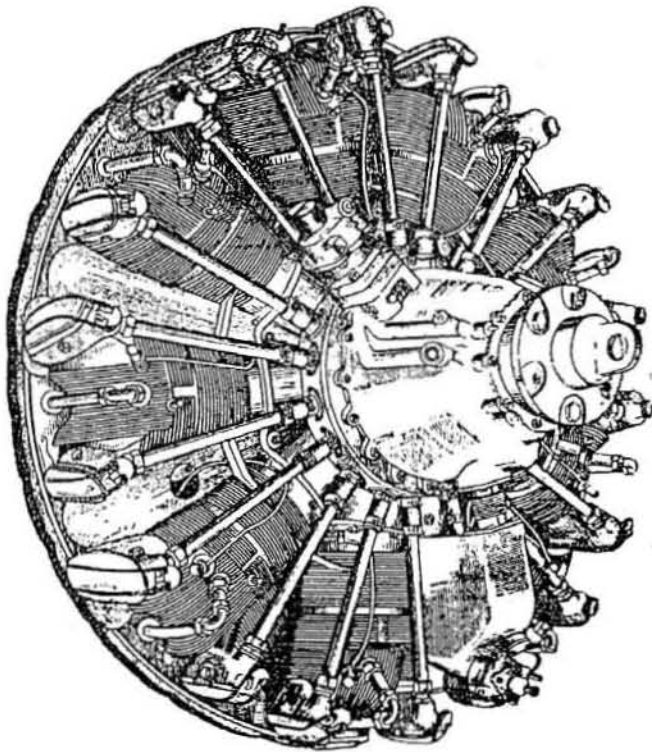


# ""Motorstar NA, Inc

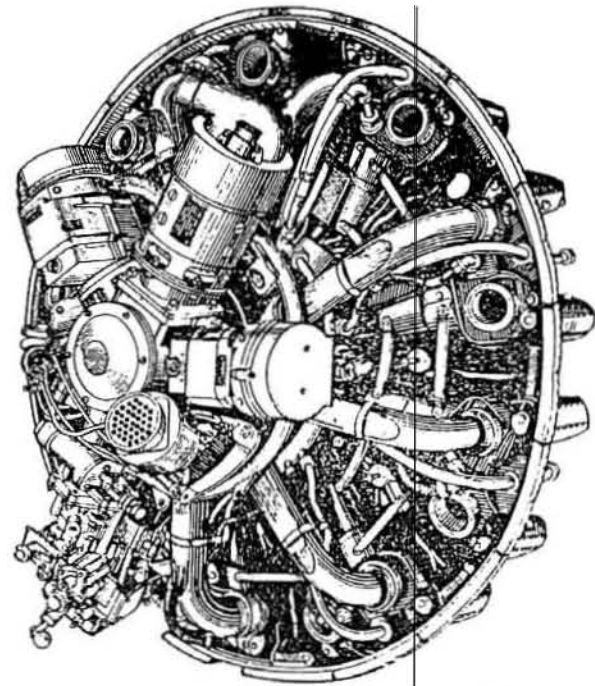
Model M-14P Series II  
Aircraft Engine

## Parts Catalog

AIRCRAFT ENGINE M-14P



FRONT VIEW



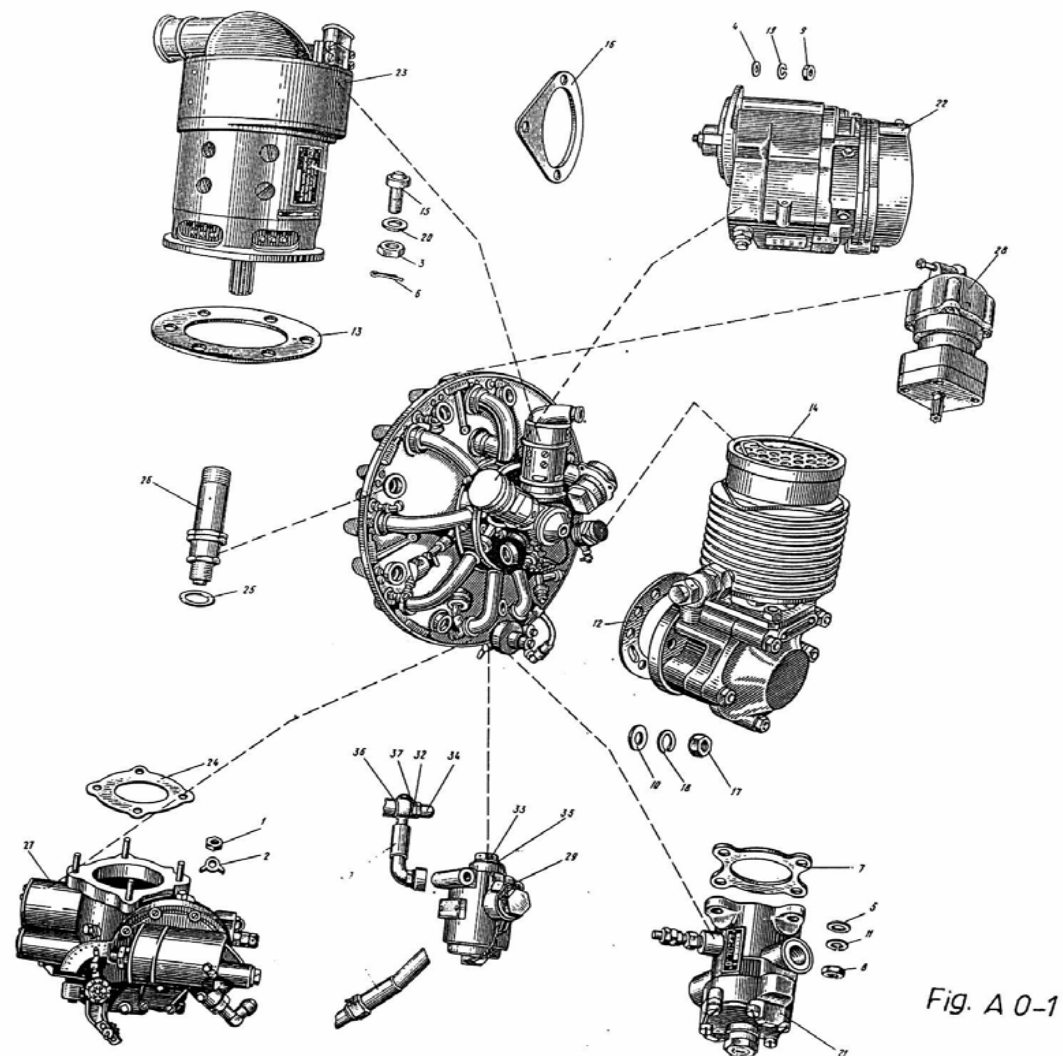
BACK VIEW

## Table of Contents

<b>ENGINE ACCESSORIES</b>	<b>5</b>
<b>PROPELLER GEAR REDUCTION ASSEMBLY</b>	<b>8</b>
<b>CRANKCASE FRONT COVER, MAIN CRANKCASE, CRANKSHAFT AND CONNECTING ROD ASSEMBLIES</b>	<b>11</b>
<b>CYLINDER, PISTON AND INTAKE TUBE ASSEMBLIES</b>	<b>17</b>
<b>VALVE ASSEMBLY</b>	<b>20</b>
<b>CAM AND PUSH ROD ASSEMBLIES</b>	<b>23</b>
<b>ENGINE BAFFLING</b>	<b>28</b>
<b>SUPERCHARGER AND REAR CRANKCASE ASSEMBLY</b>	<b>30</b>
<b>NOSE CASE AND CHIP DETECTOR ASSEMBLIES</b>	<b>35</b>
<b>OIL PUMP</b>	<b>38</b>

<b>ACCESSORY DRIVE CASE</b>	<b>41</b>
<b>TACHOMETER DRIVE ASSEMBLY</b>	<b>44</b>
<b>GENERATOR CLUTCH ASSEMBLY</b>	<b>46</b>
<b>GENERATOR DRIVE ASSEMBLY</b>	<b>48</b>
<b>MAGNETO DRIVE ASSEMBLY</b>	<b>50</b>
<b>COMPRESSOR DRIVE ASSEMBLY</b>	<b>52</b>
<b>IGNITION HARNESS ASSEMBLY</b>	<b>54</b>
<b>AIR COMPRESSOR AK-50A</b>	<b>57</b>
<b>AIR START LINES AND CYLINDER START VALVES</b>	<b>61</b>
<b>AIR START DISTRIBUTOR AND DRIVE</b>	<b>64</b>

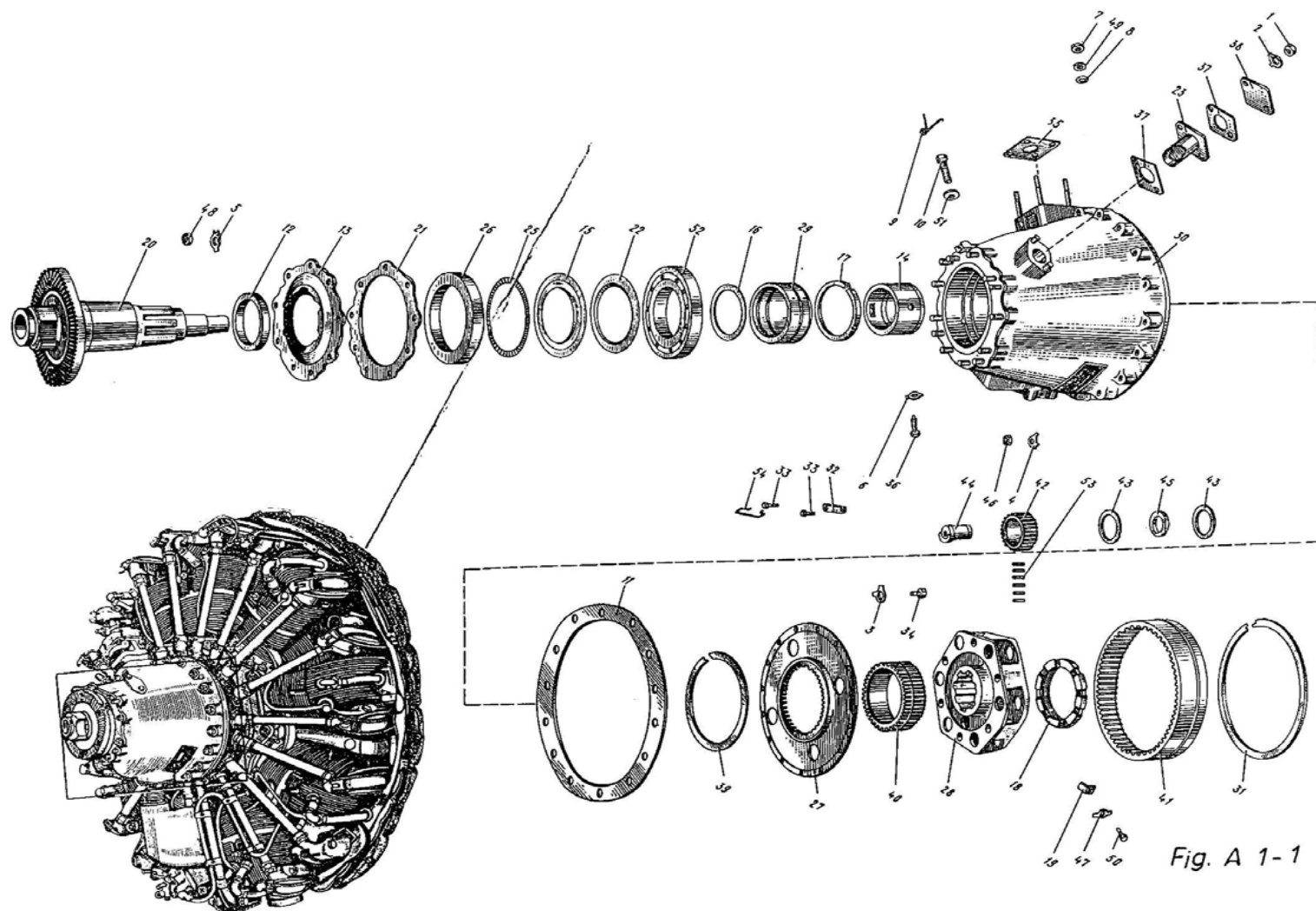
## Engine Accessories



<b>Part Number</b>	<b>0</b>	<b>Page No.</b>	<b>FIG. No.</b>	<b>#/Assy</b>
11-04-40	Nut	5	AO1-1	1
14-17-03	Safety	5	AO1-2	4
14-011-340	Hinder cover	5		1
00-03-52	Nut	5	AO1-3	6
00-07-51	Washer	5	AO1-4	6
00-07-53	Washer	5	AO1-5	4
00-12-07	Split	5	AO1-6	6
10-11-31	Gasket	5	AO1-7	4
11-08-39	Nut	5	AO1-8	4
11-08-40	Nut	5	AO1-9	6
11-08-56	Washer	5	AO1-10	6
11-08-57	Washer	5	AO1-11	4
14-11-546	Gasket	5	AO1-12	1
14-411-10	Gasket	5	AO1-13	1
14-950-390-02	Compressor AK-50A	5	AO1-14	1
15-40-52	Screw	5	AO1-15	6
26-115-01	Gasket	5	AO1-16	2
66-RD-1	Nut	5	AO1-17	6
6.65G.05 GOST 6402	Grower washer	5	AO1-18	6
8.65G.05 GOST 6402	Grower washer	5	AO1-19	6
54537	Washer	5	AO1-20	6
702ML	Fuel pump	5	A01-21	1
M-9F	Magneto	5	A01-22	2
GSR-2000M	Generating	5	A01-23	1
1950-14-20	Gasket	5	AO1-25	18
SD-492MM	Spark plug	5	A01-26	18
AK-14P	Carburetor	5	A01-27	1
R-2 series a -11- a	Prop driver	5	A01-28	1
8D2.966.064	Filter	5	A01-29	1
14-011-270	Pipe-line	5	A01-30	1

14-011-280	Pipe-line	5	A01-31	1
14-711-38	Fitting	5	A01-32	1
14-911-045	Fitting	5	A01-33	2
11-08-272	Cover	5	A01-34	1
62-17-73	Gasket	5	A01-35	4
33M51-18-14,2-2	O-ring	5	A01-36	1
33M51-22-14,2-1	O-ring	5	A01-37	1

## Propeller Gear Reduction Assembly

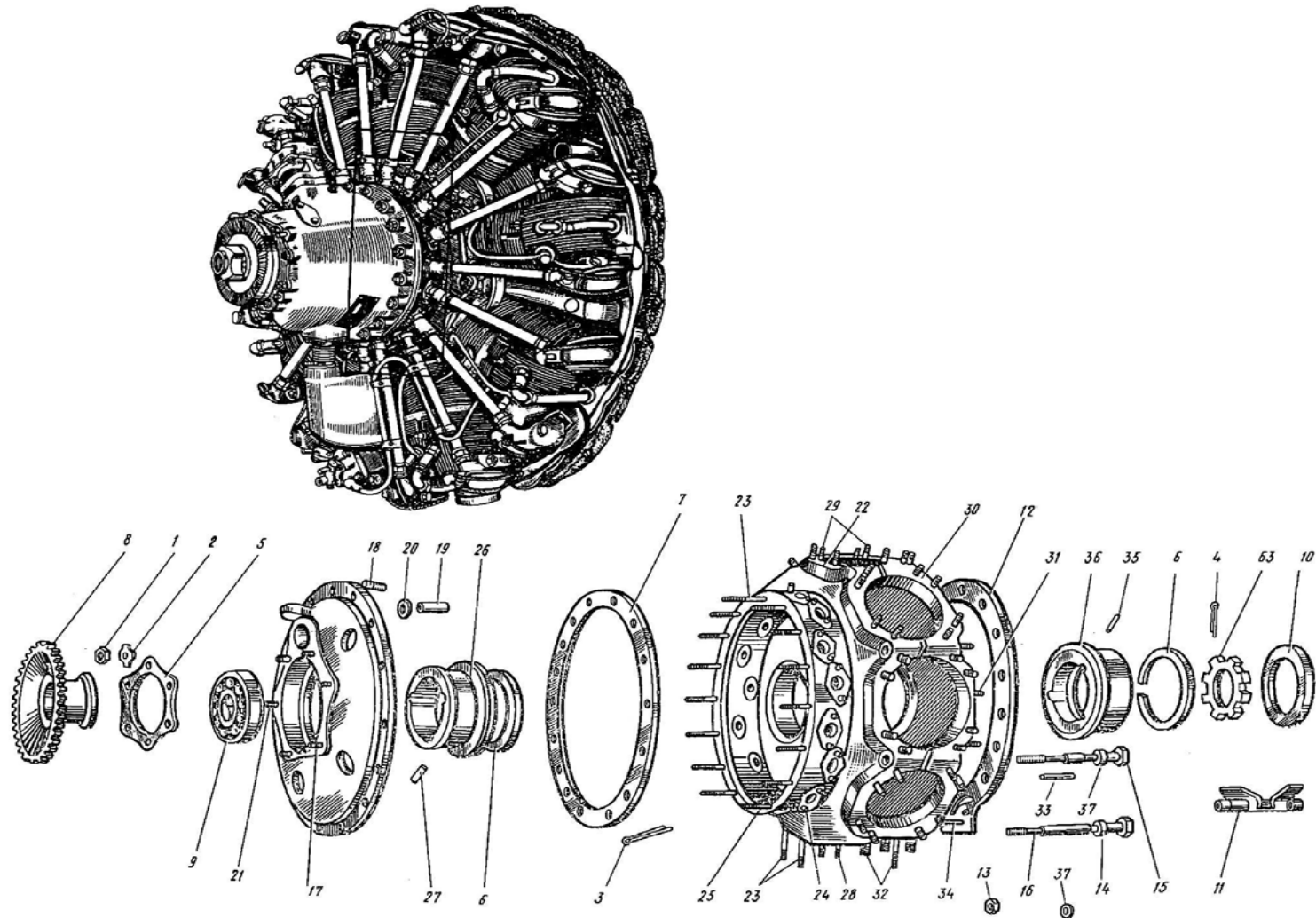




<b>Part Number</b>	<b>Name</b>	<b>Page No.</b>	<b>FIG. No.</b>	<b>#/Assy</b>
14-010-700	Reduction gear	8		1
00-03-58	Nut	8	A11-1	2
00-05-51	Safety	8	A11-2	2
00-05-54	Safety	8	A11-3	15
00-12-504	Safety	8	A11-4	15
00-711-05	Safety	8	A11-5	9
10-01-25	Safety	8	A11-6	1
11-08-40	Nut	8	A11-7	4
11-08-58	Washer	8	A11-8	1
12-01-39	Clip	8	A11-9	1
12-01-92	Oil filter	8	A11-10	1
14-01-527	Gasket	8	A11-11	1
14-010-206	Bushing	8	A11-12	1
14-010-457	Reduction gear cover	8	A11-13	1
14-010-211	Bushing	8	A11-14	1
14-010-212	Ring	8	A11-15	1
14-010-214	Ring	8	A11-16	6
14-010-216	O-ring	8	A11-17	1
14-010-217	Nut	8	A11-18	1
14-010-218	Safety	8	A11-19	1
14-010-455	Propeller shaft	8	A11-20	1
14-010-659	Western Prop shaft	8	a-11-20	1
14-010-221	Gasket	8	A11-21	1
14-010-452	Ring	8	A11-22	1
14-010-300	Breather	8	A11-23	1
14-010-350	Packing rubber	8		1
14-010-223	Spring	8	A11-25	1
14-010-360	Armature	8	A11-26	1
14-010-372	Hub	8	A11-27	1
14-010-373	Spider case	8	A11-28	1

14-010-378	Bushing	8	A11-29	1
14-010-680	Case	8	A11-30	1
14-10-09	Ring	8	A11-31	2
14-10-12	Plate	8	A11-32	6
14-10-13	Screw	8	A11-33	12
14-10-19	Pin	8	A11-34	15
14-1021	Gasket	8	A11-35	1
14-10-24	Pin	8	A11-36	1
14-10541	Gasket	8	A11-37	2
14-610-193	Cover	8	A11-38	1
14-710-29	Ring	8	A11-39	1
14-710-30	Gear	8	A11-40	1
14-710-31	Gear rim	8	A11-41	1
14-910-009	Spider	8	A11-42	6
14-910-011	Washer	8	A11-43	12
14-610-957	Spider pin	8	A11-44	6
14-610-492	Washer	8	A11-45	6
26-11-17	Nut	8	A11-46	15
26-28-23	Safety	8	A11-47	1
66-RD-2	Nut	8	A11-48	9
6.65G.05 GOST 6402	Grower washer	8	A11-49	4
3151A-4-8	Screw	8	A11-50	1
AK-05-001	Gasket	8	A11-51	1
V214D1 ETU 100/1	Bearing	8	A11-52	1
2.5x9,8 III ETU 100/7-u	Needle	8	A11-53	396
KO 0,8 GOST 792	Safety wire	8	A11-54	0,5m

## Crankcase Front Cover, Main Crankcase, Crankshaft and Connecting Rod Assemblies



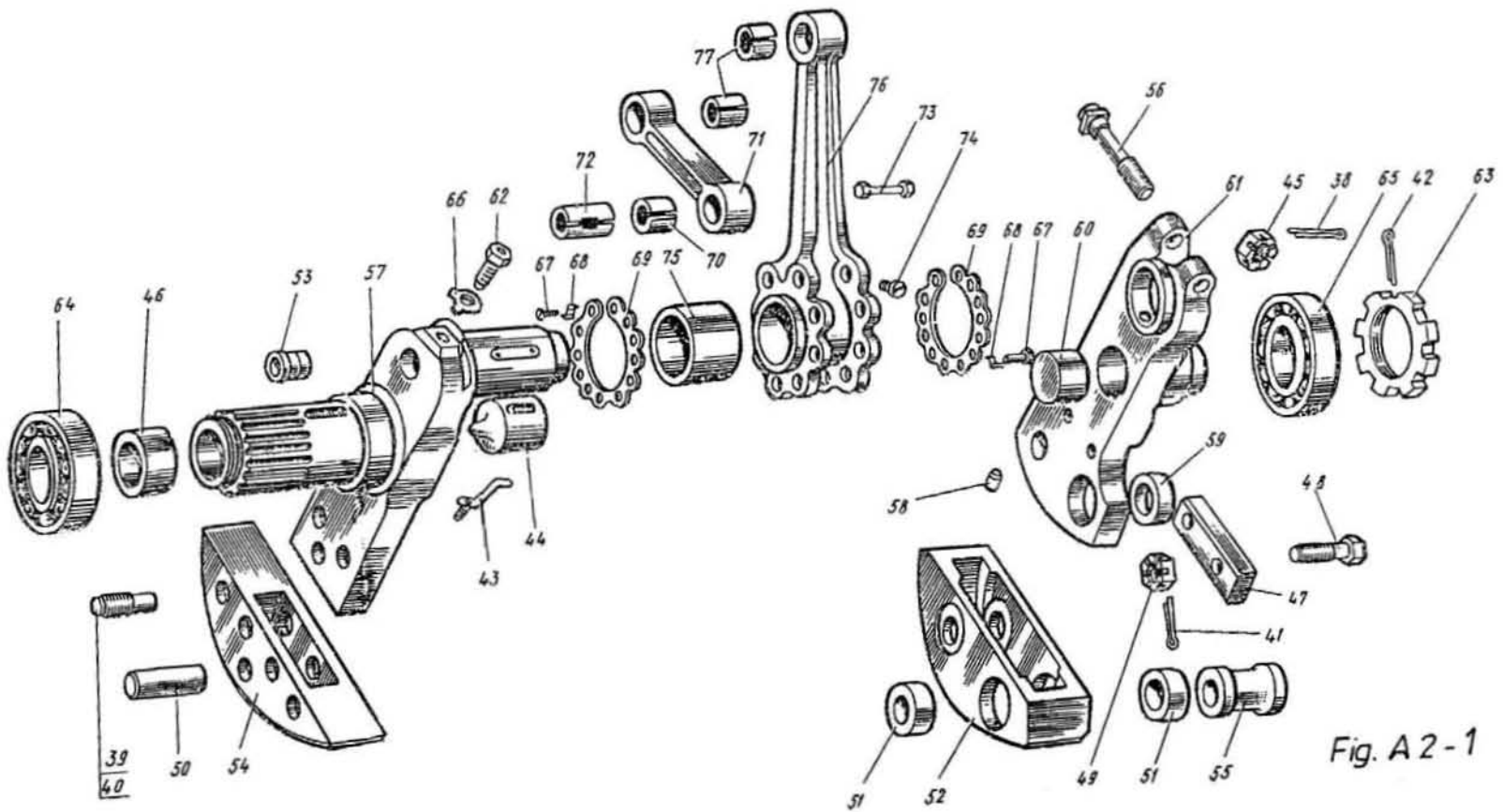


Fig. A 2 - 1

<b>Part Number</b>	<b>Name</b>	<b>Page No.</b>	<b>FIG. No.</b>	<b>#/ Assy</b>
00-03-58	Nut	11	A21-1	6
00-15-51	Safety	11	A21-2	6
00-12-07	Split	11	A21-3	9
00-711-09	Split	11	A21-4	1
14-01-22	Flange	11	A21-5	1
14-01-33	Ring	11	A21-6	2
14-01-527	Gasket	11	A21-7	1
14-003-001	Hub	11	A21-8	1
14-03-23	Bearing	11	A21-9	1
14-03-45	Ring	11	A21-10	1
14-601-102	Oil deflector	11	A21-11	1
14-901-310	Middle crankcase and cover	11		1
14-601-114	Gasket	11	A21-12	1
00-03-52	Nut	11	A21-13	9
00-07-500	Washer	11	A21-14	1
14-01-04	Pin	11	A21-15	8
14-601-103	Pin	11	A21-16	1
14-901-180-01	Prior cover	11	A21-17	1
00-01-519	Bolt	11	A21-18	6
14-01-526	Pipe-line	11	A21-19	1
14-301-04	Ring	11	A21-20	2
62-10-53	Bolt	11	A21-21	6
14-901-270-01	Prior semi-crankcase	11	A21-22	1
00-01-505	Bolt	11	A21-23	17
00-01-519	Bolt	11	A21-24	36
00-01-541	Bolt	11	A21-25	4

14-01-30	Case	11	A21-25	1
14-01-506	Checking pin	11	A21-27	3
14-401-02	Bolt	11	A21-28	2
		11		2
14-701-12	Bolt	11	A21-29	34
		11		34
14-901-280	Hinder semi-crankcase	11	A21-30	1
00-01-503	Bolt	11	A21-31	11
00-01-505	Bolt	11	A21-32	2
00-01-602	Bolt	11	A21-33	2
00-601-01	Bolt	11	A21-34	1
14-01-506	Checking pin	11	A21-35	3
14-01-506-01	Checking pin	11		3
14-701-07	Case	11	A21-36	1
97-RD-6	Washer	11	A21-37	17
14-603-03	Shaft	12		1
00-711-10	Split	12	A21-38	1
14-203-09	Plug	12	A21-39	2
14-203-10	Plug	12	A21-40	2
14-603-02	Shaft	12		1
00-711-08	Split	12	A21-41	2
00-711-09	Split	12	A21-42	1
14-03-82	Checking pin	12	A21-43	1
14-03-518	Plug	12	A21-44	1
14-603-01	Shaft	12		1
14-03-04	Nut	12	A21-45	1
14-03-24	Bushing	12	A21-46	1
14-03-53	Plate	12	A21-47	1

14-03-54	Pin	12	A21-48	2
14-03-55	Nut	12	A21-49	2
14-03-514	Pin	12	A21-50	3
14-302-82	Counterweight	12		1
14-03-19	Bushing	12	A21-51	4
14-203-07	Counterweight	12	A21-52	1
14-703-10	Plug	12	A21-53	1
14-603-100	Counterweight	12	A21-54	1
14-603-101	Pin	12	A21-55	2
14-703-07	Bolt	12	A21-56	1
14-703-13	Prior part of crankshaft	12	A21-57	1
14-703-108	Hinder shaft	12		1
10-03-25	Checking pin	12	A21-58	1
14-03-18	Bushing	12	A21-59	2
14-703-02	Cover	12	A21-60	1
14-703-14	Hinder part of crankshaft	12	A21-61	1
14-703-06	Injector	12	A21-62	1
14-703-11	Nut	11	A21-63	1
14-703-109	Bearing	12	A21-64	1
14-703-110	Bearing	12	A21-65	1
108365	Safety	12	A21-66	1
14-606-01	Connecting-rod assembly	12		1
12-06-13	Screw	12	A21-67	18
26-06-12	Safety	12	A21-68	18
14-06-11	Plate	12	A21-69	2
14-606-03	Auxiliary connecting-rod	12		8
14-06-502	Bushing	12	A21-70	1
14-606-101	Auxiliary connecting-rod	12	A21-71	1

14-606-04	Pin	12		8
14-606-104	Cover	12	A21-73	1
14-606-20	Main connecting-rod	12		1
14-606-27	Main connecting-rod	12		1
10-06-18	checking pin	12	A21-74	2
14-606-28	Bushing	12	A21-75	1
14-606-111	Main connecting-rod	12	A21-76	1
14-606-103	Bushing	12	A21-77	9



## Cylinder, Piston and Intake Tube Assemblies

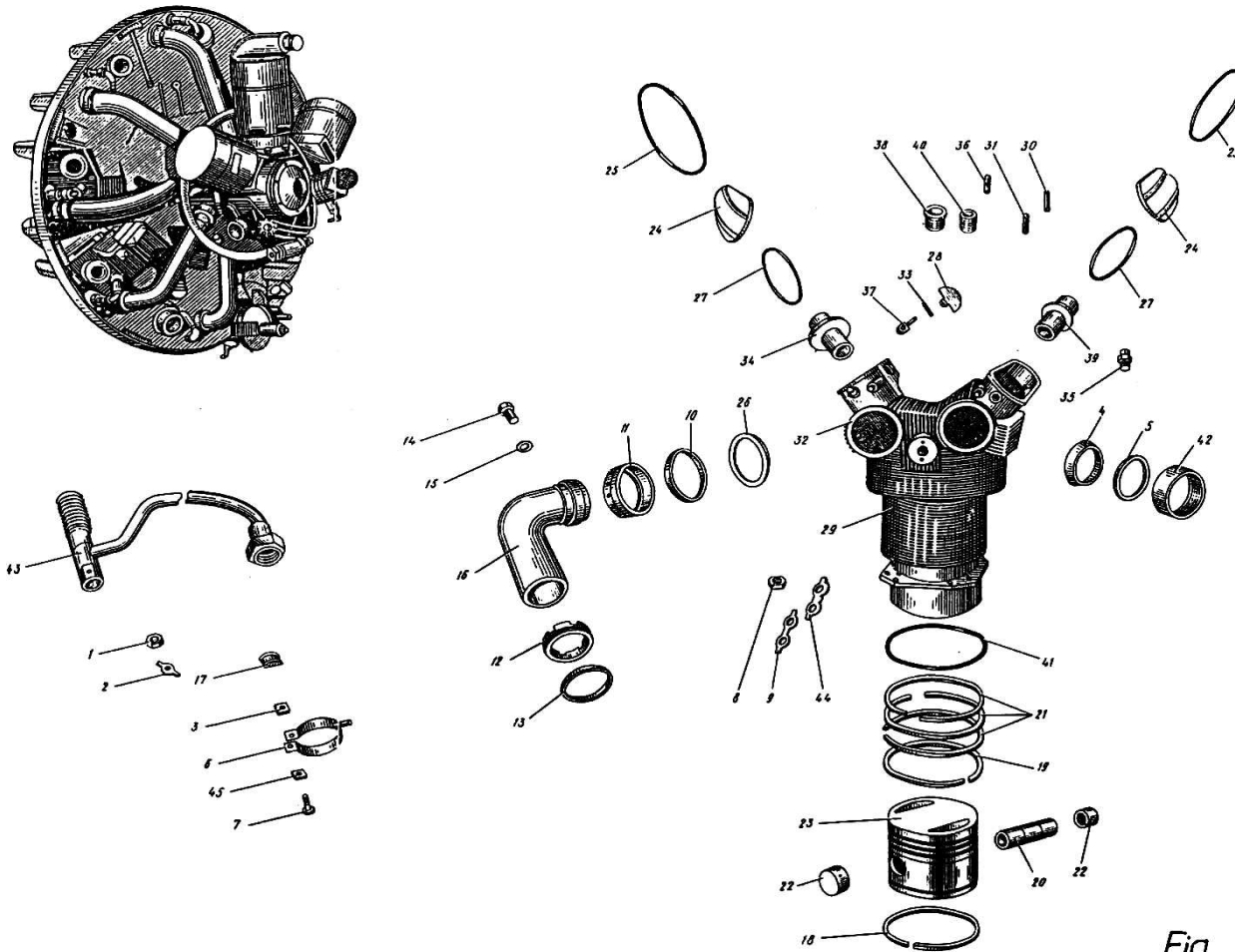


Fig. A3-1

<b>Part Number</b>	<b>Name</b>	<b>Page No.</b>	<b>FIG. No.</b>	<b>#/ Assy</b>
00-03-58	Nut	17	A31-1	1
00-05-51	Safety	17	A31-2	1
10-04-57	Nut	17	A31-3	1
14-604-196	Flange	17	A31-4	9
14-04-542	Gasket	17	A31-5	9
14-04-576	Collard	17	A31-6	1
14-07-09	Screw	17	A31-7	1
14-204-15	Nut	17	A31-8	72
14-204-16	Safety	17	A31-9	27
14-904-380	Pipe-line	17		1
10-04-22	Washer	17	A31-10	1
10-04-24	Nut	17	A31-11	1
10-04-25	Nut	17	A31-12	9
10-04-26	intake seal ring	17	A31-13	9
14-904-028	Plug	17	A31-14	1
14-904-033	Gasket	17	A31-15	1
14-904-370	Pipe-line	17	A31-16	1
14-904-300-01	Pipe-line	17		2
14-904-290-01	Pipe-line	17	A31-16	1
14-604-56	Pipe-line	17		6
14-604-189	Pipe-line	17	A31-16	1
14-604-192	Plug	17	A31-17	10
14-605-22	Piston	17		9
14-05-514	Piston ring	17	A31-18	1
14-05-517	Piston ring	17	A31-19	1
14-605-120	Pin	17	A31-20	1
14-605-122	Piston ring	17	A31-21	3

140605-121	Plug	17	A31-22	2
14-605-103	Piston	17	A31-23	1
14-004-130	Cylinder	17		9
10-04-37	Cover	17	A31-24	2
10-04-38	Cable	17	A31-25	2
10-04-46	Gasket	17	A31-26	1
14-04-513	Gasket	17	A31-27	2
14-04-546	Nut	17	A31-28	2
14-004-120	Cylinder	17	A31-29	1
00-01-527	Bolt	17	A31-30	1
00-01-530	Bolt	17	A31-31	2
10-04-15	Fitting	17	A31-32	1
14-04-514	Axle	17	A31-33	2
14-04-538	Bushing	17	A31-34	1
14-04-545	Fitting	17	A31-35	2
14-204-03	Checking pin	17	A31-36	6
14-204-11	Checking pin	17	A31-37	2
14-204-14	Bushing	17	A31-38	2
14-04-538	Bushing	17	A31-39	1
26-104-03	Bushing	17	A31-40	1
14-704-04	Gasket	17	A31-41	9
14-704-13	Nut	17	A31-42	9
14-717-107-01	pipe-line	17	A31-43	1
15-04-22	Safety	17	A31-44	9
26-07-32	Washer	17	A31-45	1

## Valve Assembly

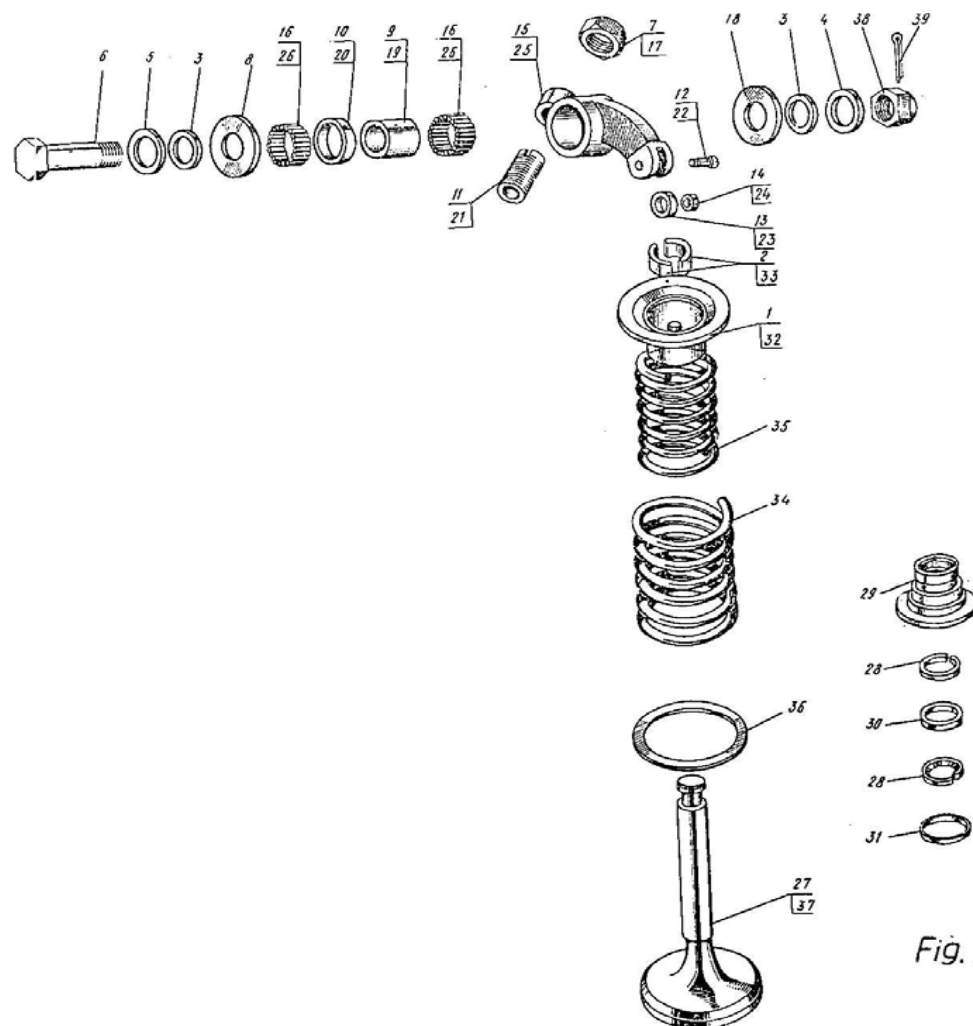
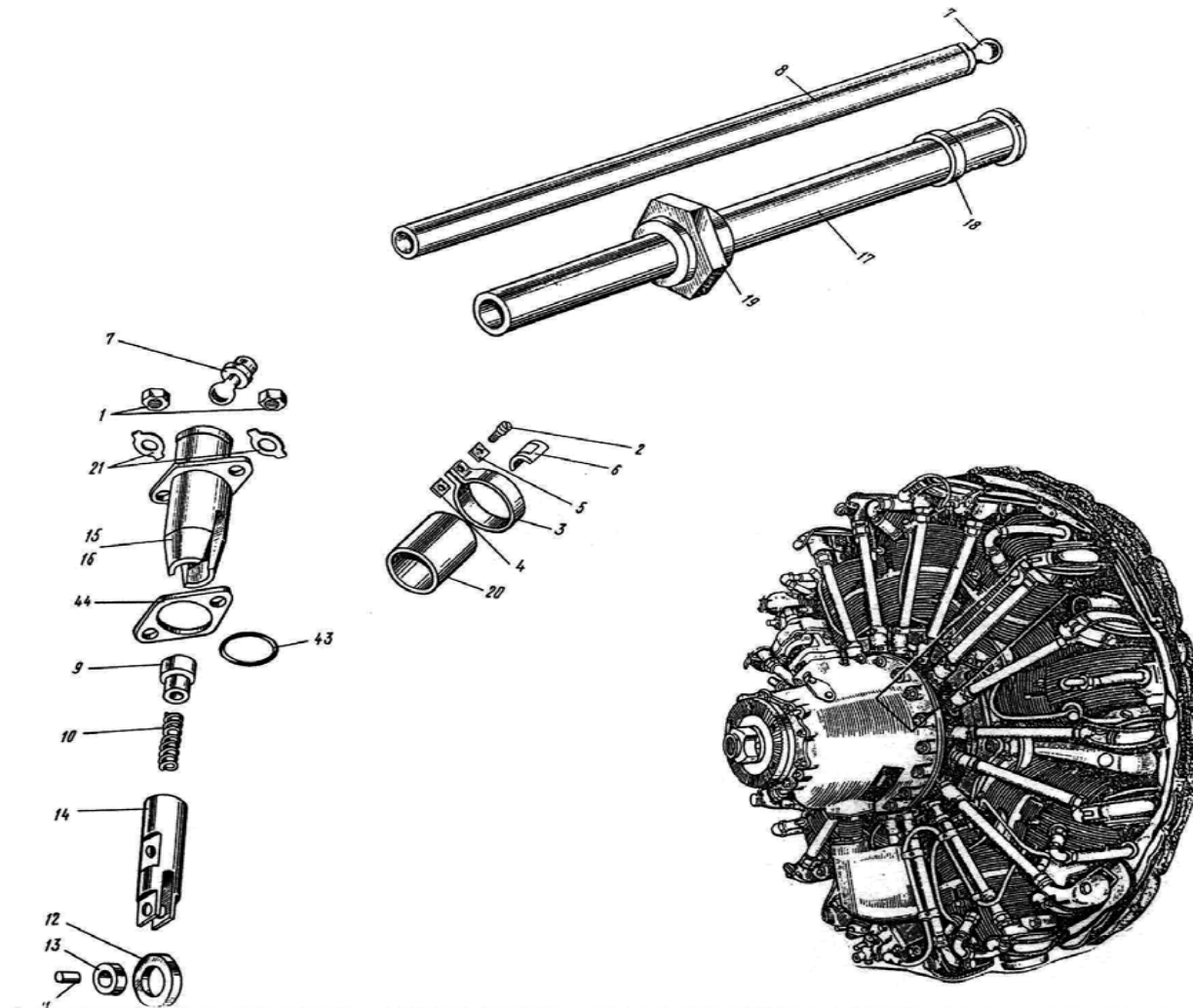


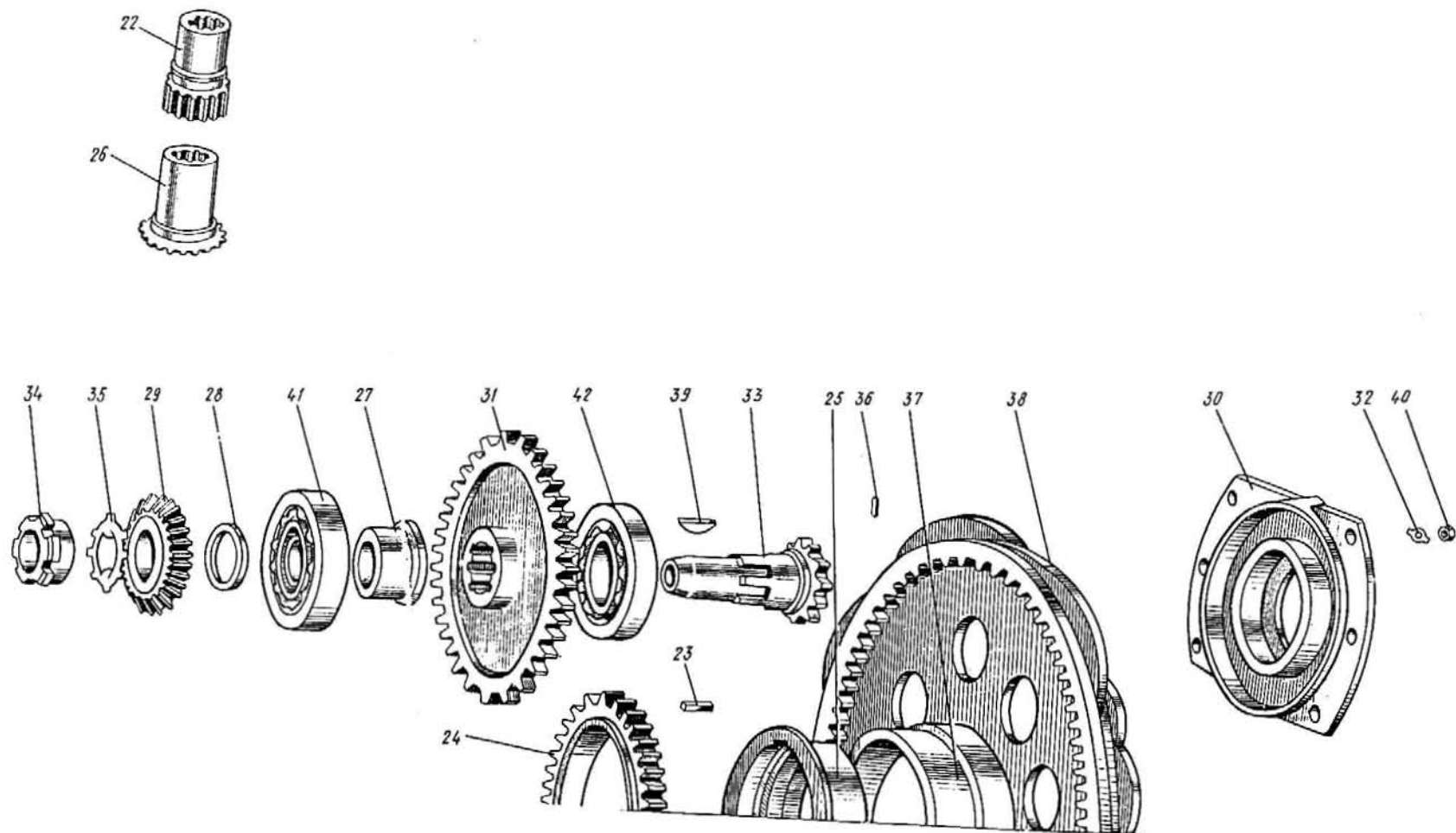
Fig. A3-2

<b>Part Number</b>	<b>Name</b>	<b>Page No.</b>	<b>FIG. No.</b>	<b>#/ Assy</b>
14-004-130	Cylinder	20		9
14-04-511	Plate	20	A32-1	1
14-04-529	Safety	20	A32-2	2
14-07-511	Washer	20	A32-3	4
14-07-512	Washer	20	A32-4	2
14-07-513	Washer	20	A32-5	2
14-207-02	Axle	20	A32-6	2
14-407-104-01	Tappet lever	20		1
19-07-04	Nut	20	A32-7	1
14-07-03	Washer	20	A32-8	2
14-07-04-01	Bushing	20	A32-9	1
14-07-08-01	Ring	20	A32-10	1
14-307-03	Screw	20	A32-11	1
14-407-102-01	Tappet lever	20		1
14-07-502	Axle	20	A32-12	1
14-07-508	Roller	20	A32-13	1
14-07-509	Bushing	20	A32-14	1
14-407-01-01	Tappet lever	20	A32-15	1
2X7,8A5 III ETU 100/7-U	Roller	20	A32-16	56
14-407-105-01	Tappet lever	20		1
10-07-04	Nut	20	A32-17	1
14-07-03	Washer	20	A32-18	1
14-07-04-01	Bushing	20	A32-19	1
14-07-08-01	Ring	20	A32-20	1
14-307-03	Screw	20	A32-21	1
14-407-103-01	Tappet lever	20		1
14-07-502	Axle	20	A32-22	1

14-07-508	Roller	20	A32-23	1
14-07-509	Bushing	20	A32-24	1
14-407-02-01	Tappet lever	20	A32-25	1
2x7,8 A5III ETU 100/7-u	Roller	20	A32-26	56
14-004-150	Exhaust valve	20	A32-27	1
14-004-160	Bushing	20		1
14-604-165	Ring	20	A32-28	2
14-004-14	Bushing	20	A32-29	1
14-604-200	Washer	20	A32-30	1
14-604-201	Ring	20	A32-31	1
14-604-179	Plate	20	A32-32	1
14-604-180	Safety	20	A32-33	2
14-004-15	Spring	20	A32-34	2
14-004-16	Spring	20	A32-35	2
14-604-183	Washer	20	A32-36	2
14-604-197	Valve	20	A32-37	1
26-07-16	Nut	20	A32-38	2
69-RD-6	Split	20	A32-39	2

## Cam and Push Rod assemblies





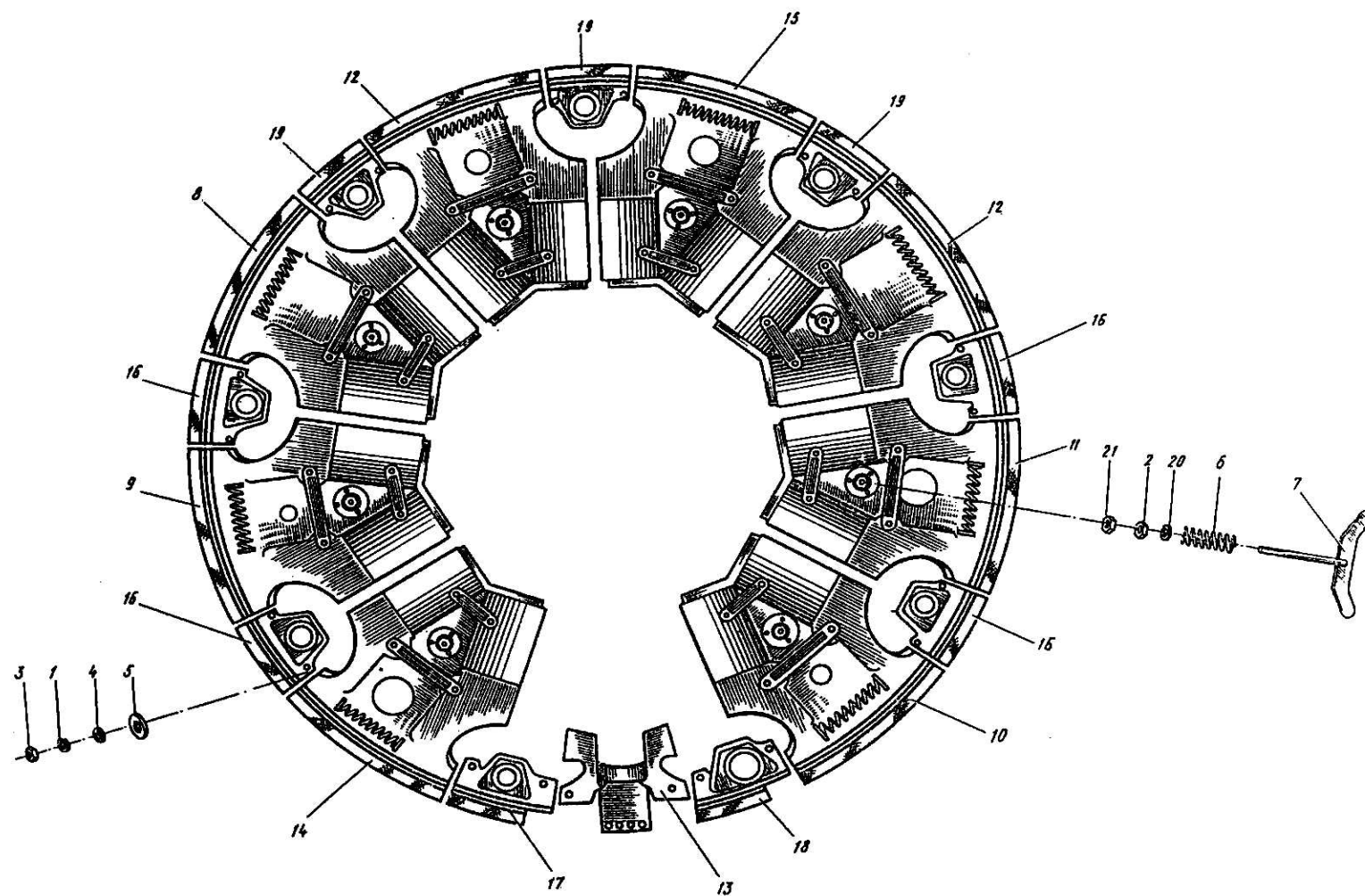


<b>Part Number</b>	<b>Name</b>	<b>Page No.</b>	<b>FIG. No.</b>	<b>#/ Assy</b>
00-03-58	Nut	24	A33-1	36
14-07-600	Collar	24		36
14-07-515	Screw	24	A33-2	1
14-07-516	Band	24	A33-3	1
14-07-517	Nut	24	A33-4	1
14-07-518	Washer	24	A33-5	1
26-07-31	Gasket	24	A33-6	1
14-307-104	Rod	24		9
14-307-104-01	Rod	24	A33-6	9
14-307-04	Extremity rod	24	A33-7	2
		24		2
14-307-05	Rod	24	A33-8	1
14-307-05-01	Rod	24		1
14-609-13	Pucher	24		9
14-309-03-01	Extremity pusher	24	A33-9	9
		24		9
14-309-09	Spring	24	A33-10	9
		24		9
14-709-01	Axle	24	A33-11	9
		24		9
14-709-02	Roller	24	A33-12	9
		24		9
14-709-03	Bushing	24	A33-13	9
		24		9
14-709-04-01	Pusher	24	A33-14	1
		24		1

14-609-125	Guide	24	A33-15	1
14-609-13-01	Pucher	24		9
14-609-126	Guide	24	A33-16	1
14-707-01	Protection	24	A33-17	18
14-707-02	Ring	24	A33-18	18
14-707-03	Nut	24	A33-19	18
14-707-04	Pipe-line	24	A33-20	18
14-709-11	Safety	24	A33-21	36
14-08-23	Coupling	24	A33-22	1
14-008-040	Prior cover	24		1
10-03-5-	Wedge	24	A33-23	1
14-008-002	Pinion	24	A33-24	1
14-08-16	Bushing	24	A33-25	1
14-08-21	Pinion	24	A33-26	1
14-08-22	Bushing	24	A33-27	1
14-08-25	Washer	24	A33-28	1
14-08-507	Pinion	24	A33-29	1
14-608-20	Cover	24	A33-30	1
14-008-003	Pinion	24	A33-31	1
14-608-132	Safety	24	A33-32	6
14-608-134	Axle	24	A33-33	1
14-608-135	Nut	24	A33-34	1
14-608-142	Safety	24	A33-35	1
14-708-107	Cam plate	24		1
00-12-11	Pin	24	A33-36	2
14-08-17	Bushing	24	A33-37	1
14-708-04	Washer	24	A33-38	1
26-60-73	Wedge	24	A33-39	1

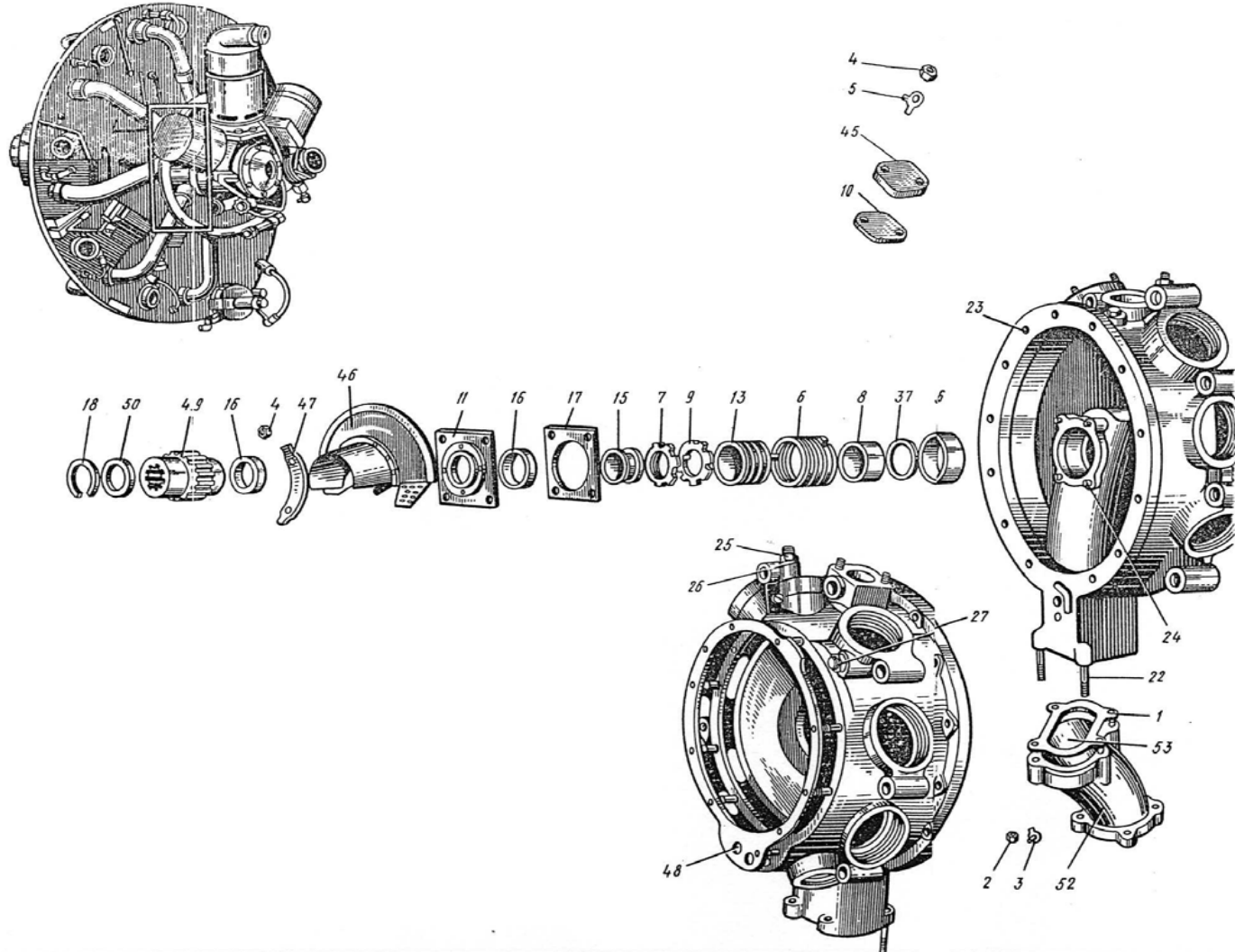
66-RD-1	Nut	24	A33-40	6
5-204 ETU 100/3	Bearing	24	A33-41	1
20-304K ETU 100/3	Bearing	24	A33-42	1
14-09-502	Ring	24	A33-43	18
14-909-011	Gasket	24	A33-44	18

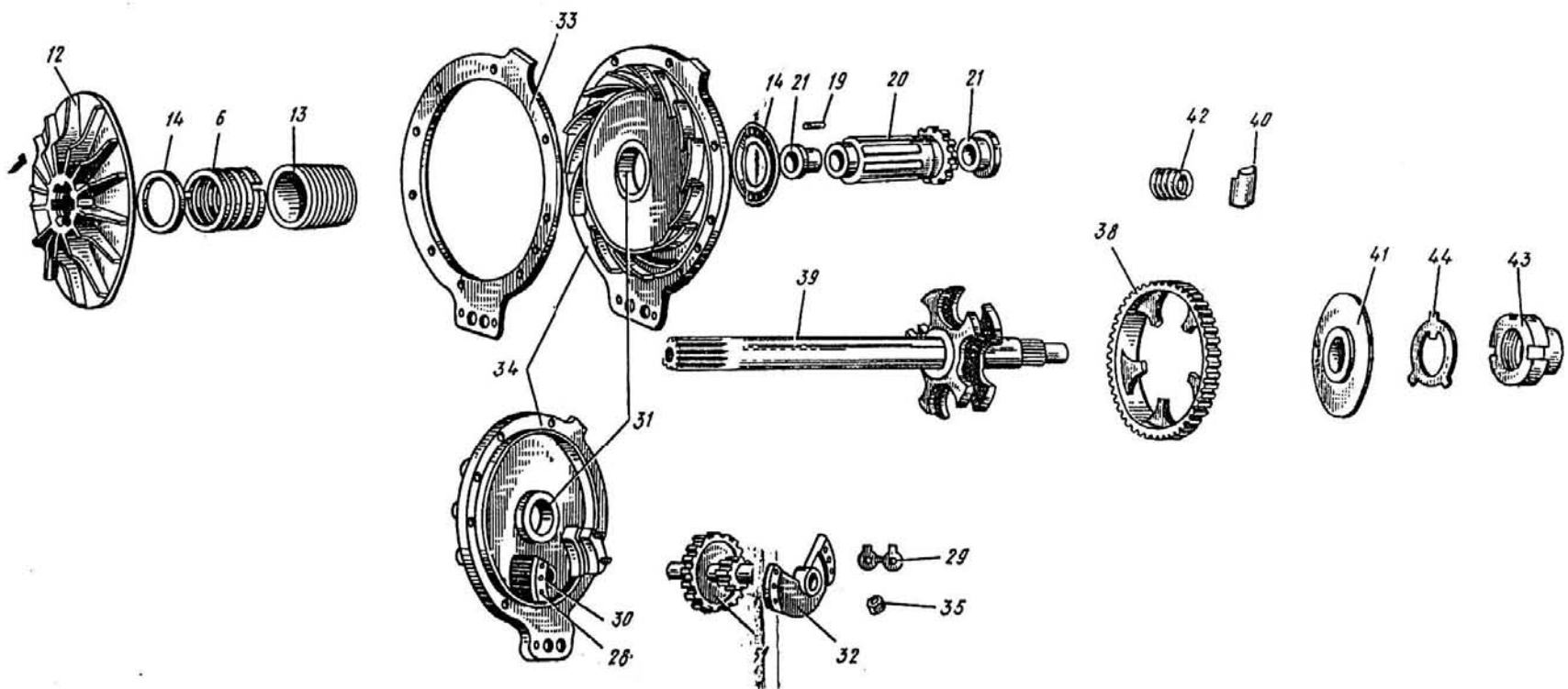
## Engine Baffling



<b>Part Number</b>	<b>Name</b>	<b>Page No.</b>	<b>FIG. No.</b>	<b>#/Assy</b>
14-936-500	Deflectors	28		1
00-07-53	Washer	28	A34-1	18
11-08-37	Nut	28	A34-2	8
11-08-39	Nut	28	A34-3	18
11-08-57	Washer	28	A34-4	18
14-36-500	Gasket	28	A34-5	18
14-36-554	Spring	28	A34-6	8
14-736-104	Plate	28	A34-7	8
14-936-410-01	Air governor	28	A34-8	1
14-936-420-01	Air governor	28	A34-9	1
14-936-440-01	Air governor	28	A34-10	1
14-936-450	Air governor	28	A34-11	1
14-936-470	Air governor	28	A34-12	2
14-936-480	Air governor	28	A34-13	1
14-936-430-01	Air governor	28	A34-14	1
14-936-510	Air governor	28	A34-15	1
14-936-540	Air governor	28	A34-16	4
14-936-540-01	Air governor	28	A34-17	1
14-936-540-02	Air governor	28	A34-18	1
14-936-540-03	Air governor	28	A34-19	3
97-RD-3	Washer	28	A34-20	16

## Supercharger and Rear Crankcase Assembly





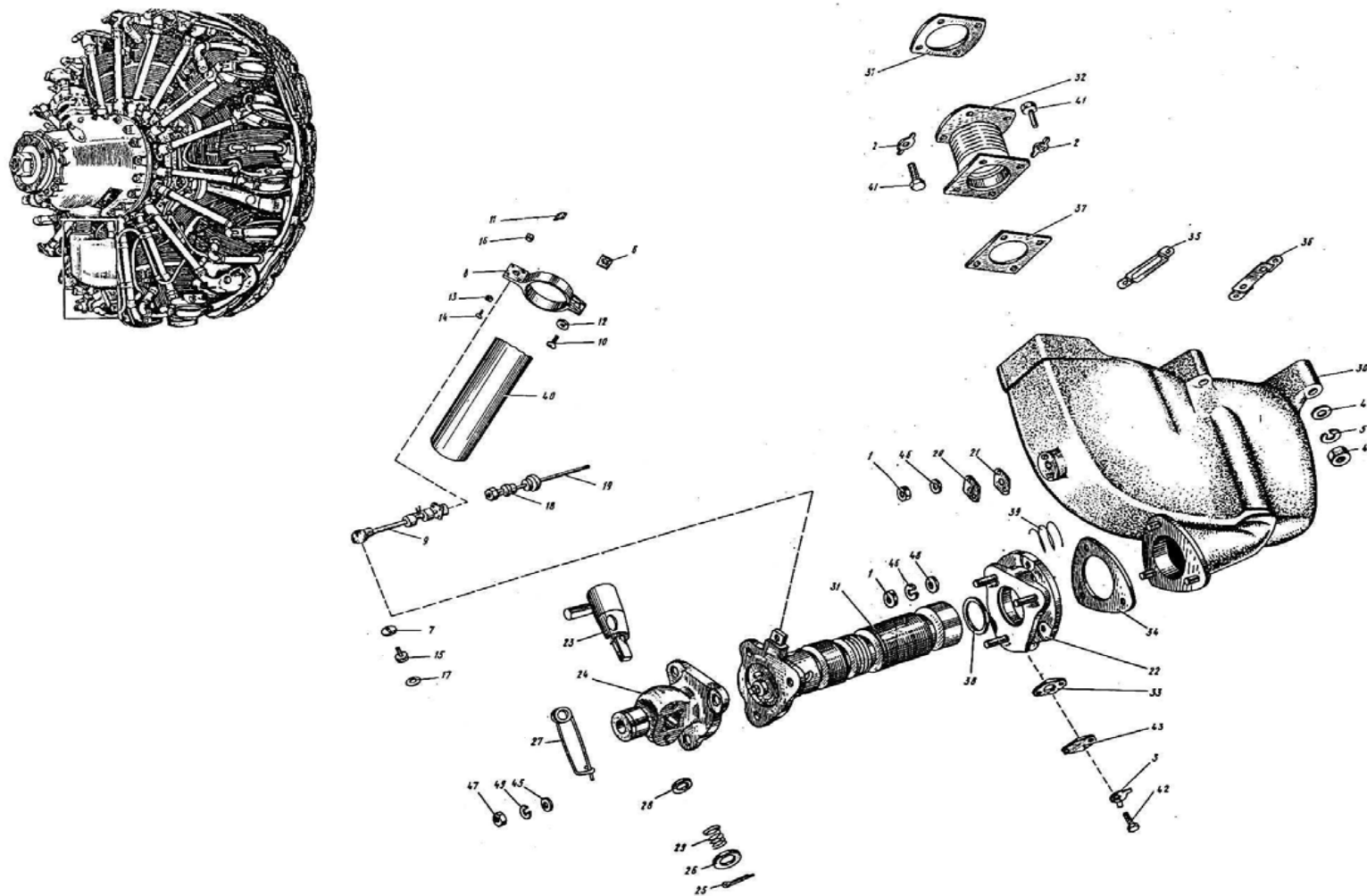
<b>Part Number</b>	<b>Name</b>	<b>Page No.</b>	<b>FIG. No.</b>	<b>#/Assy</b>
00-01-512	Bolt	31	A41-1	4
11-08-40	Nut	31	A41-2	4
14-17-03	Safety	31	A41-3	4
14-518-02	Compressor	30		1
00-03-58	Nut	30	A41-4	6
00-05-58	Safety	30	A41-5	2
10-18-11	Piston ring	30	A41-6	8
10-18-13	Nut	30	A41-7	1
10-18-16	Bushing	30	A41-8	1
14-18-515	Safety	30	A41-9	1
14-217-21	Gasket	30	A41-10	1
14-317-14	Dowel	30	A41-11	1
14-318-02	Compressor rotor	30	A41-12	1
14-318-04	Bushing	30	A41-13	2
14-318-08	Deflector	30	A41-14	2
14-318-11	Bushing	30	A41-15	1
14-318-12	Ring	30	A41-16	2
14-318-17	Gasket	30	A41-17	1
14-318-21	Ring	30	A41-18	1
14-318-100	Axle	30		1
00-12-11	Bolt	30	A41-19	2
14-318-03	Axle	30	A41-20	1
14-318-09	Bushing	30	A41-21	2
14-417-102-01	Collector	30		1
00-01-509	Bolt	30	A41-22	2
14-317-104	Collector	30	A41-23	1



00-01-531	Bolt	30	A41-24	4
14-17-511	Fit	30	A41-25	1
14-17-530	Gasket	30	A41-26	1
14-17-601	Injector	30	A41-27	1
14-417-103-01	Diffuser	30		1
00-01-529	Bolt	30	A41-28	4
00-12-600	Safety	30	A41-29	2
14-17-513	Bushing	30	A41-30	1
14-17-519	Bushing	30	A41-31	1
14-317-02	Cover	30	A41-32	1
14-317-03	Gasket	30	A41-33	1
14-417-02-01	Diffuser	30	A41-34	1
51003	Nut	30	A41-35	4
14-317-19	Bushing	30	A41-36	1
14-418-01	Ring	30	A41-37	2
14-518-01	Coupling	30		1
14-518-101	Pinion	30	A41-38	1
14-518-102	Axle	30	A41-39	1
14-518-104	Plate spring	30	A41-40	10
14-518-108	Cover	30	A41-41	1
14-518-109	Spring	30	A41-42	5
14-618-134	Nut	30	A41-43	1
14-518-110	Safety	30	A41-44	1
14-610-193	Flange	30	A41-45	1
14-617-30	Air governor	30	A41-46	1
14-617-119	Safety	30	A41-47	2
14-617-121	Gasket	30	A41-48	1
14-618-100	Coupling	30	A41-49	1

14-618-101	Wash	30	A41-50	1
14-618-125	Pinion	30	A41-51	1
14-617-01	Reducing piece	30	A41-52	inf.
14-617-05	Gasket	30	A41-53	1

## Nose Case and Chip Detector Assemblies



<b>Part Number</b>	<b>Name</b>	<b>Page No.</b>	<b>FIG. No.</b>	<b>#/Assy</b>
00-03-58	Nut	35	A51-1	1
00-05-55	Safety	35	A51-2	6
00-05-58	Safety	35	A51-3	8
00-07-18	Washer	35	A51-4	4
00-07-53	Washer	35	A51-5	4
14-000-340	Conductors	35		1
	assembling	35		
10-04-57	Nut	35	A51-6	1
14-002-206	Washer	35	A51-7	1
14-002-230	Collar	35	A51-8	1
14-002-240	Conductor	35	A51-9	1
14-07-09	Screw	35	A51-10	1
14-604-192	Plug	35	A51-11	1
26-07-32	Washer	35	A51-12	1
3.65G.02.9 GOST 6402	Washer	35	A51-13	4
3166A-3-10	Screw	35	A51-14	4
3166A-6-10	Screw	35	A51-15	1
3320A3	Nut	35	A51-16	4
3402A-1-6-10	Washer	35	A51-17	1
2RM14KPE4G1V1	Plug socket	35	A51-18	1
GEO.364.126TU		35		
GE7.860.023.012	Conductor	35	A51-19	1
14-002-202	Cover	35	A51-20	1
14-211-34	Gasket	35	A51-21	1
14-602-37	Cup	35	A51-22	1
14-602-39	Tap	35		1
14-602-38	Tap	35	A51-23	1

14-062-208	Case	35	A51-24	1
70-RD-1	Split	35	A51-25	1
100786	Washer	35	A51-26	1
100787	Clip	35	A51-27	1
100790	Washer	35	A51-28	1
100792	Spring	35	A51-29	1
14-602-53	Oil collector	35	A51-30	1
14-602-55	Signaling filter	35	A51-31	1
14-602-03	Silphon	35	A51-32	1
14-602-104	Gasket	35	A51-33	1
14-602-106	Gasket	35	A51-34	1
14-602-107	Gasket	35	A51-35	2
14-602-108	Gasket	35	A51-36	2
14-602-112	Gasket	35	A51-37	2
14-602-161	Ring	35	A51-38	1
14-602-162	Spring	35	A51-39	1
14-904-380	Pipe-line cyl.4	35	A51-40	Inf.
14-610-272	Pin	35	A51-41	8
14-717-21	Screw	35	A51-42	2
14-902-029	Cover	35	A51-43	1
26-11-17	Nut	35	A51-44	4
5.65G.05 GOST 6402	Washer	35	A51-45	3
6.65G.05 GOST 6402	Washer	35	A51-46	6
51003	Nut	35	A51-47	3
54530	Washer	35	A51-48	3
54531	Washer	35	A51-49	3

## Oil pump

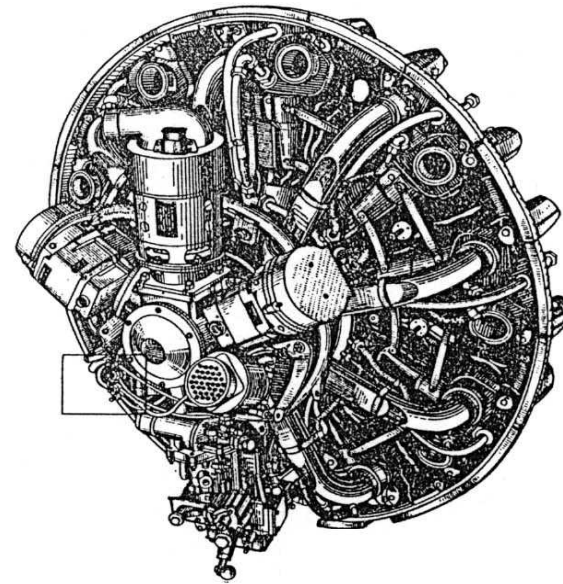
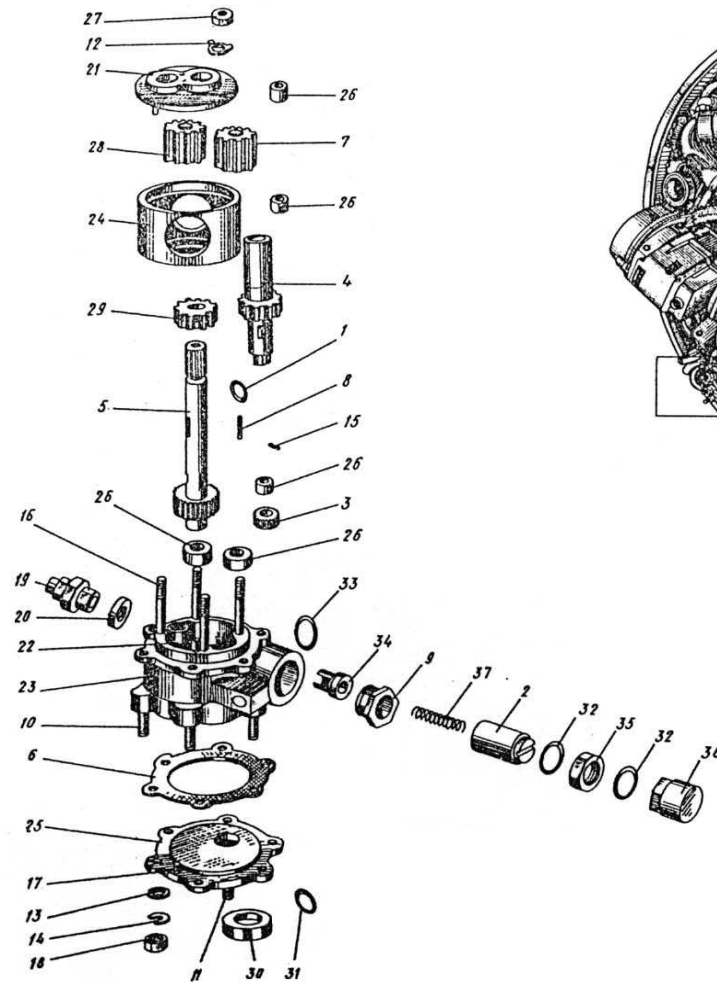


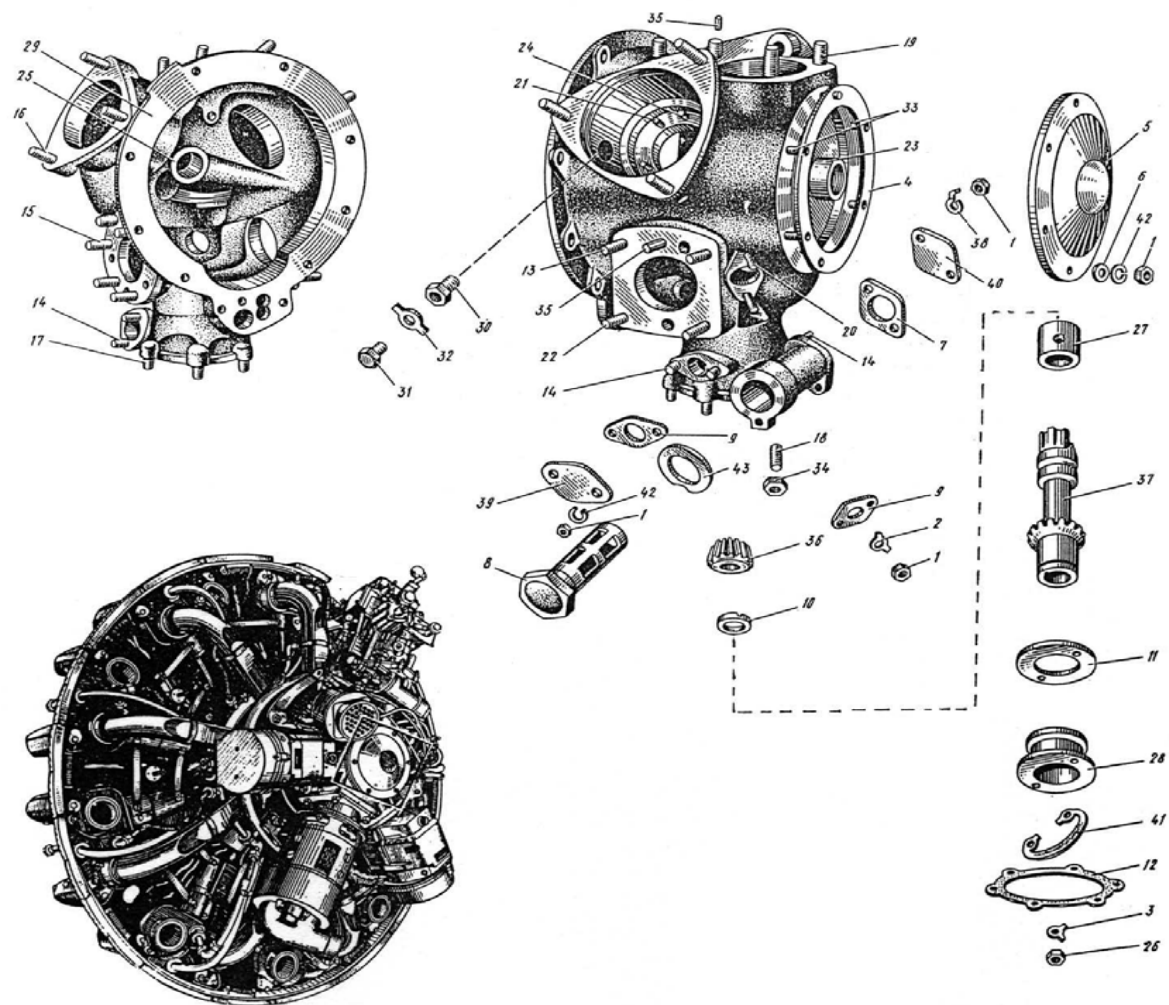
Fig. A5-2

<b>Part Number</b>	<b>Name</b>	<b>Page No.</b>	<b>FIG. No.</b>	<b>#/Assy</b>
14-611-75	Oil pump	38		1
105698	Ring	38	A52-1	1
14-11-725	Screw	38	A52-2	1
14-611-166	Axle	38	A52-4	1
14-611-244	Axle	38	A52-5	1
14-711-03	Gasket	38	A52-6	1
14-711-83	Pinion	38	A52-7	1
14-711-84	Wedge	38	A52-8	1
MS716	Bushing	38	A52-9	1
14-611-74	Oil pump	38		1
00-01-104	Bolt	38	A52-10	6
00-01-503	Bolt	38	A52-11	2
00-05-57	Safety	38	A52-12	4
00-07-18	Washer	38	A52-13	4
00-07-53	Washer	38	A52-14	4
00-12-11	Bolt	38	A52-15	4
00-711-01	Bolt	38	A52-16	4
10-11-71	Pinion	38	A52-17	3
11-08-39	Nut	38	A52-18	4
14-17-511	Fitting	38	A52-19	1
14-17-530	Gasket	38	A52-20	1
14-211-04	Cover	38	A52-21	1
14-211-91	Valve	38	A52-22	1
14-711-31	Case	38	A52-23	1
14-711-32	Case	38	A52-24	1
14-611-243	Cover	38	A52-25	1
14-711-34	Bushing	38	A52-26	4

51003	Nut	38	A52-27	4
14-711-105	Pinion	38	A52-28	1
14-711-106	Pinion	38	A52-29	1
14-611-72	Gasket rubber	38	A52-30	1
14-611-279-01	Spring	38	A52-31	1
62-02-03	Gasket	38	A52-32	2
62-02-04	Gasket	38	A52-33	1
62-13-05	Valve	38	A52-34	1
K1125	Nut	38	A52-35	1
K1810	Cover	38	A52-36	1
K5147	Spring	38	A52-37	1



## Accessory Drive Case



<b>Part Number</b>	<b>Name</b>	<b>Page No.</b>	<b>FIG. No.</b>	<b>#/Assy</b>
14-011-340	Hinder cover	41		1
00-03-58	Nut	41	A71-1	18
00-05-58	Safety	41	A71-2	6
00-12-601	Safety	41	A71-3	6
10-11-65	Gasket	41	A71-4	1
10-11-66	Cover	41	A71-5	1
11-08-56	Washer	41	A71-6	11
14-11-522	Gasket	41	A71-7	1
14-11-592	Filter	41	A71-8	1
14-211-34	Gasket	41	A71-9	1
14-611-236	Washer	41	A71-10	1
14-211-46	Gasket	41	A71-11	1
14-311-10	Gasket	41	A71-12	1
14-611-32-01	Hinder cover	41		1
00-01-100	Bolt	41	A71-13	1
00-01-502	Bolt	41	A71-14	4
00-01-508	Bolt	41	A71-15	6
00-01-512	Bolt	41	A71-16	6
00-01-104	Bolt	41	A71-17	6
00-01-531	Bolt	41	A71-18	2
00-01-517	Bolt	41	A71-19	4
00-01-518	Bolt	41	A71-20	2
00-01-519	Bolt	41	A71-21	8
00-711-03	Bolt	41	A71-22	3
10-11-40	Bushing	41	A71-23	1
10-1-71	Pin	41	A71-24	2
14-311-03	Bushing	41	A71-25	1

14-611-245	Safety	41	A71-26	1
14-411-12	Bushing	41	A71-27	1
14-411-13	Bushing	41	A71-28	1
14-611-163-01	Cover	41	A71-29	1
14-611-171	Reducing piece	41	A71-30	2
14-611-172	Screw	41	A71-31	2
14-611-173	Safety	41	A71-32	2
2-RD-53	Bolt	41	A71-33	6
00-03-58	Nut	41	A71-34	2
53632	Pin	41	A71-35	2
14-611-235	Pinion	41	A71-36	1
14-611-234	Vertical axle	41	A71-37	1
14-627-123	Shackle	41	A71-38	1
14-711-56	Cover	41	A71-39	1
14-711-97	Cover	41	A71-40	1
6.65G.05 GOST 6404	Washer	41	A71-41	15
1734A-1,5-27-38	Washer	41	A71-42	1

## Tachometer Drive Assembly

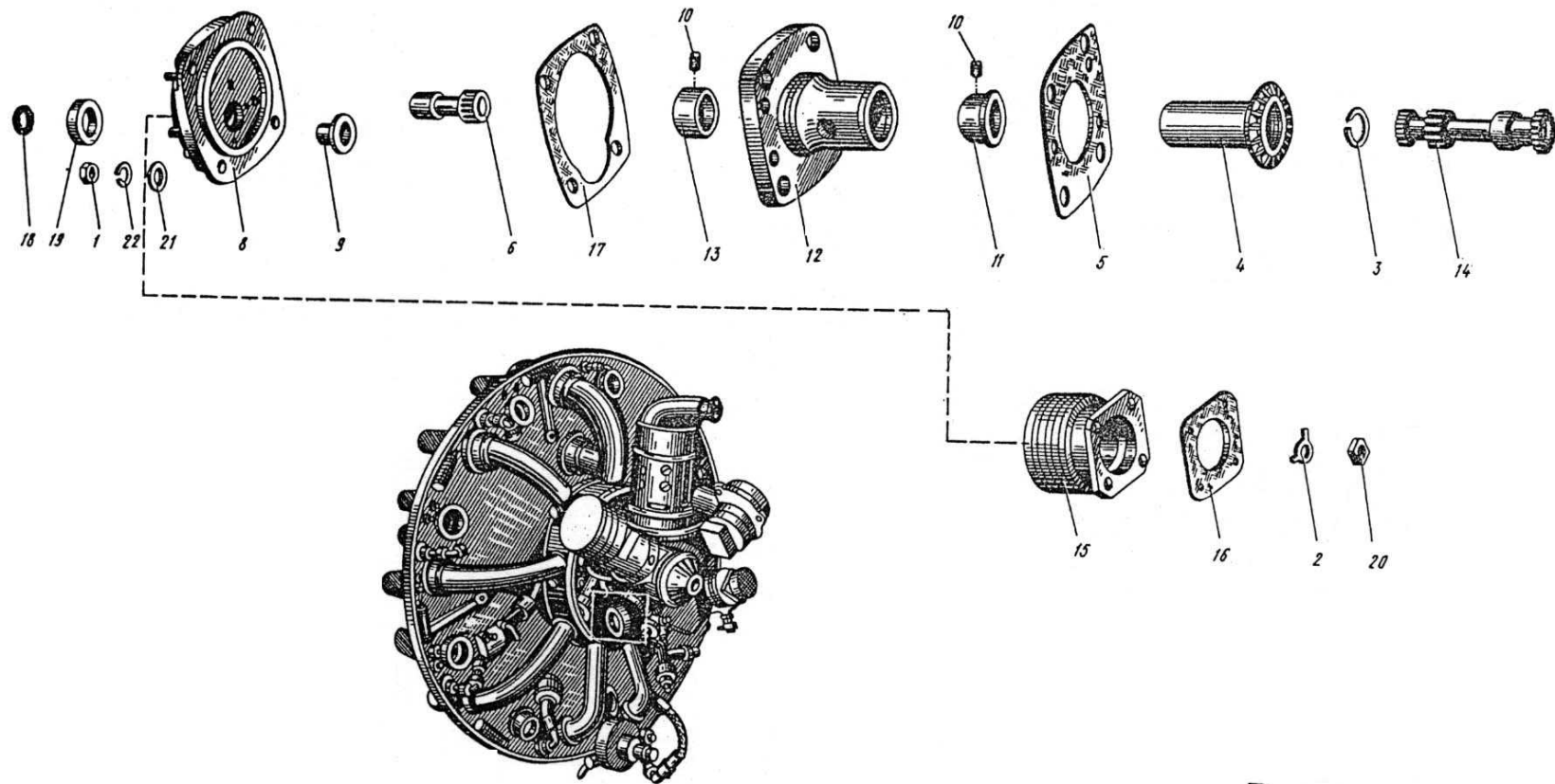
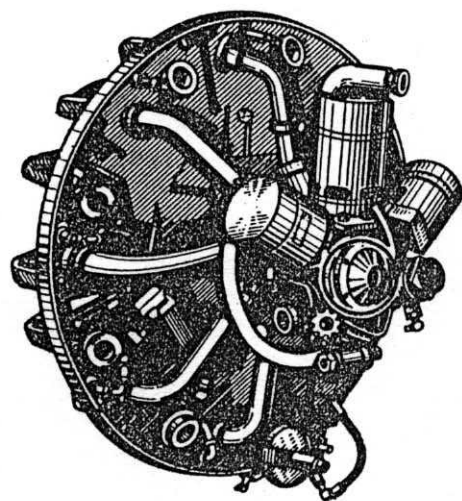
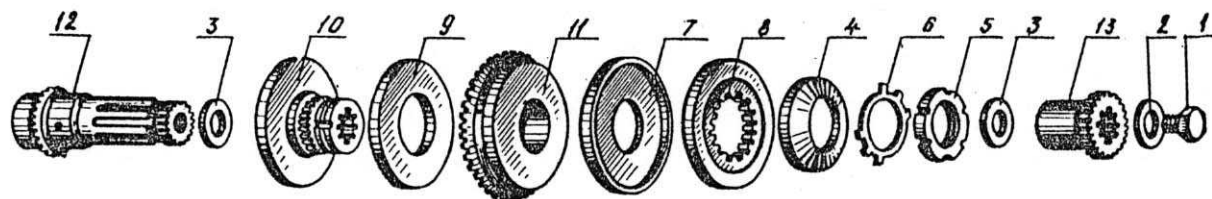


Fig. A 7-2

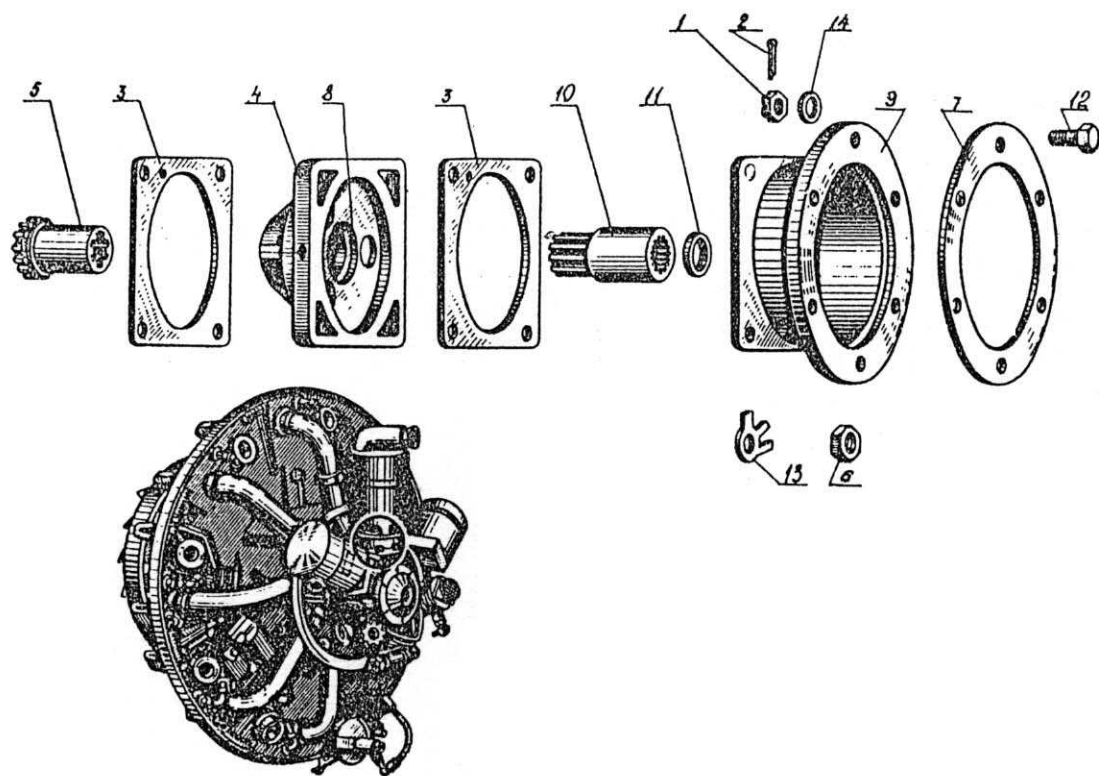
<b>Part Number</b>	<b>Name</b>	<b>Page No.</b>	<b>FIG. No.</b>	<b>#/Assy</b>
14-011-340	Cover	44		1
00-03-14	Nut	44	A72-1	4
00-05-58	Safety	44	A72-2	6
10-11-60	Washer	44	A72-3	1
14-611-242	Pinion	44	A72-4	1
14-311-14	Gasket	44	A72-5	1
14-611-03	Pinion	44	A72-6	1
14-611-27-01	Case	44		1
00-01-519	Split	44	A72-7	4
14-611-155	Case	44	A72-8	1
15-41-10	Bushing	44	A72-9	1
14-311-104	Case	44		1
00-12-11	Checking pin	44	A72-10	2
10-13-22	Bushing	44	A72-11	1
14-311-12	Case	44	A72-12	1
15-11-15	Bushing	44	A72-13	1
14-611-103	Pinion	44	A72-14	1
14-611-283	Flange	44	A72-15	1
14-611-157	Gasket	44	A72-16	1
15-11-120	Gasket	44	A72-17	1
14-611-279	Spring	44	A72-18	2
14-611-21	Bushing	44	A72-19	2
66-RD-1	Nut	44	A72-20	10
607	Washer	44	A72-21	4
8.65G.05 GOST 6402	Grower washer	44	A72-22	10

## Generator Clutch Assembly



<b>Part Number</b>	<b>Name</b>	<b>Page No.</b>	<b>FIG. No.</b>	<b>#/Assy</b>
14-011-340	Hinder cover	46		1
14-11-714	Screw	46	A73-1	1
14-11-715	Safety	46	A73-2	1
14-311-11-00 ÷ 17	Washer	46	A73-3	2
14-411-101	Coupling	46		1
14-311-24	Washer	46	A73-4	1
14-311-26	Nut	46	A73-5	1
14-311-28	Safety	46	A73-6	1
14-411-01	Hinder disk	46	A73-7	1
14-411-02	Disk	46	A73-8	1
14-411-03	Prior disk	46	A73-9	1
14-411-04	Driver	46	A73-10	1
14-411-05	Pinion	46	A73-11	1
14-611-202	Pinion	46		1
14-311-32	Pinion	46	A73-12	1
14-611-210	Plug	46	A73-13	1

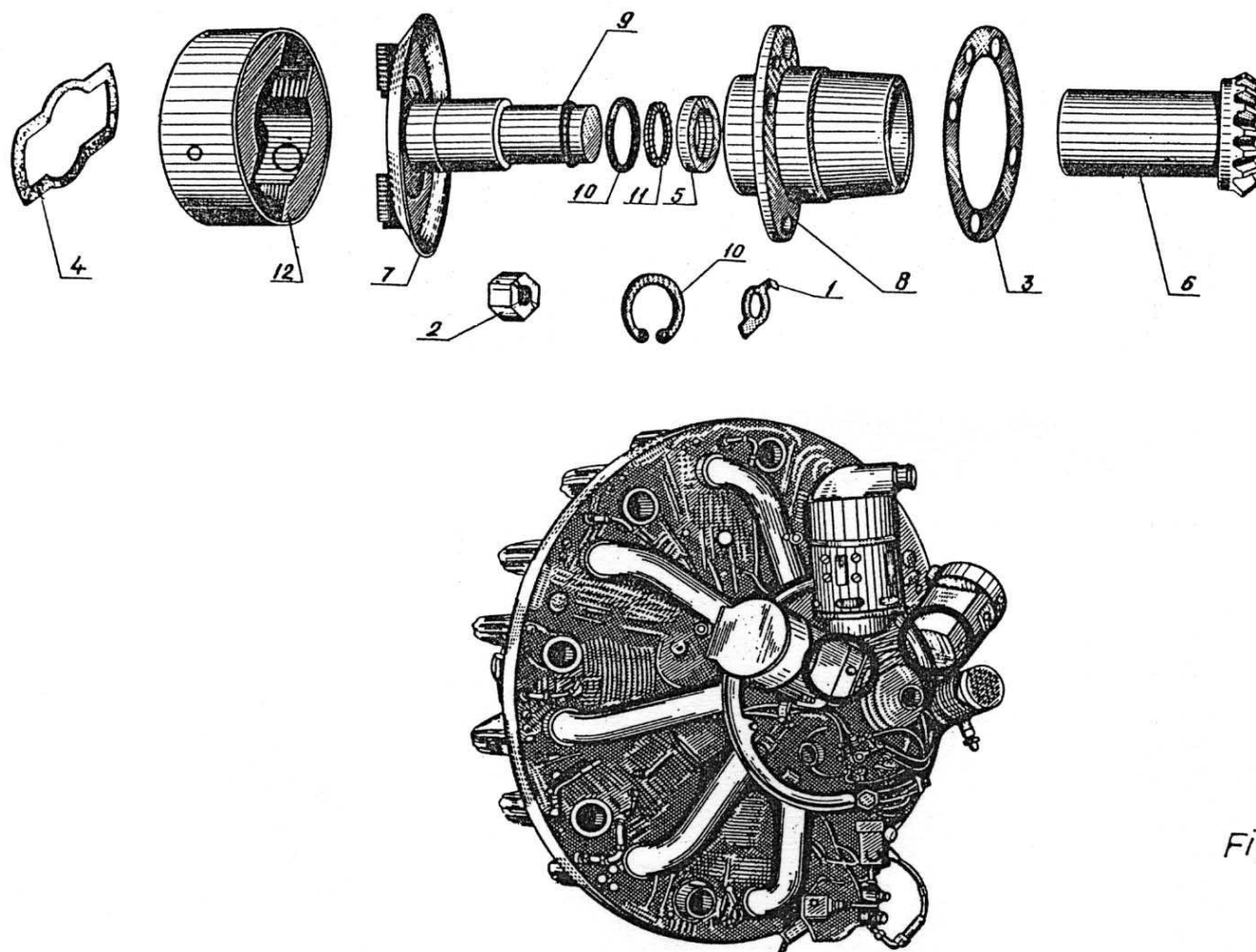
## Generator Drive Assembly





<b>Part Number</b>	<b>Name</b>	<b>Page No.</b>	<b>FIG. No.</b>	<b>#/Assy</b>
14-011-340	Hinder cover	48		1
00-03-52	Nut	48	A74-1	6
00-12-07	Split	48	A74-2	6
14-11-547	Gasket	48	A74-3	2
14-013-290	Case	48	A74-4	1
14-013-250	Pinion	48	A74-5	1
14-204-15	Nut	48	A74-6	4
14-411-10	Gasket	48	A74-7	1
14-613-22	Rubber packing	48	A74-8	1
15-11-123	Flange	48	A74-9	1
15-11-124	Reducing piece	48	A74-10	1
15-11-125	Washer	48	A74-11	1
15-40-52	Pin	48	A74-12	6
108365	Safety	48	A74-13	4
54537	Washer	48	A74-14	6
14-611-279-03	Spring	48	A74-15	1

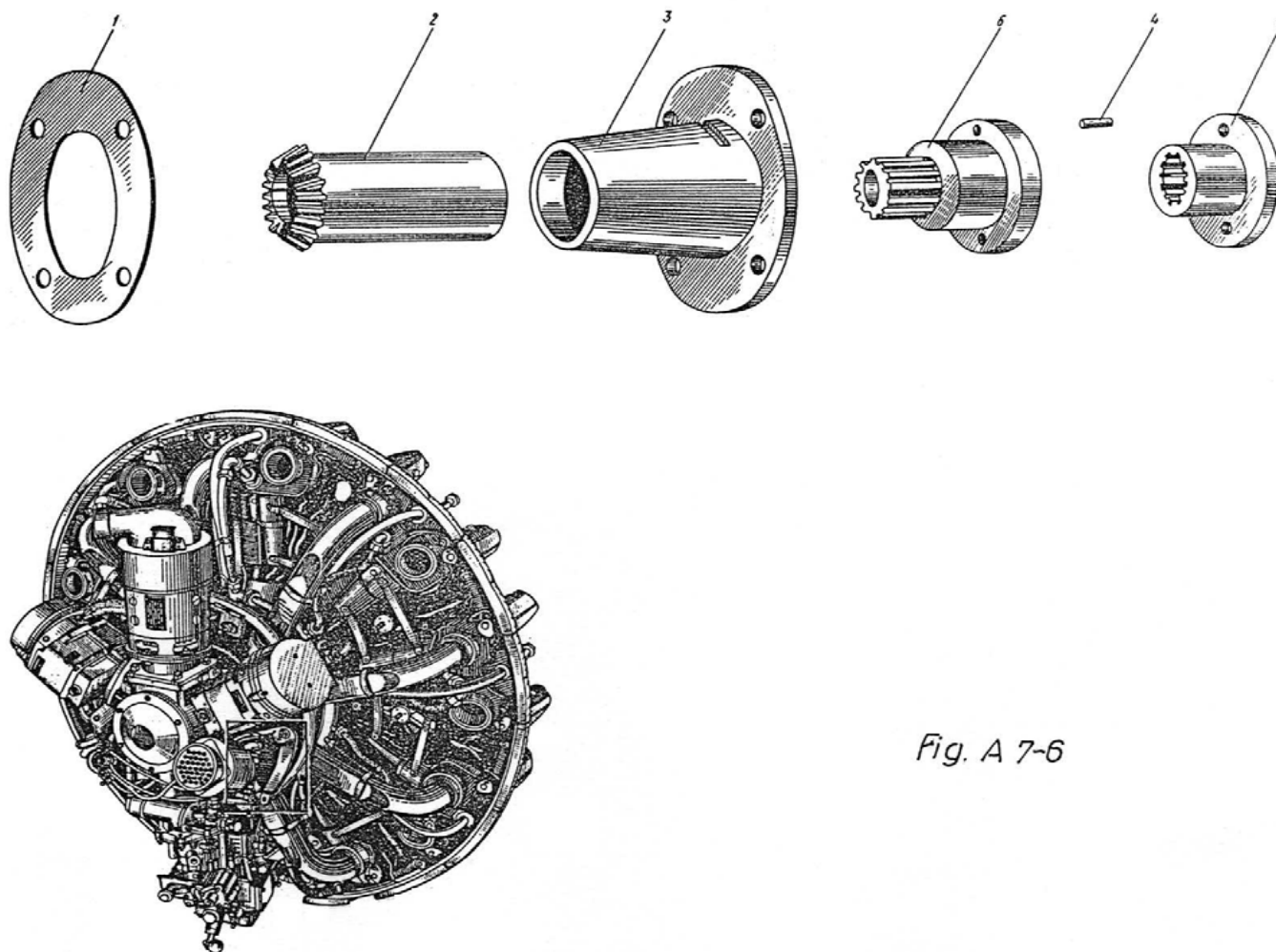
## Magneto Drive Assembly



*Fig. A 7-5*

<b>Part Number</b>	<b>Name</b>	<b>Page No.</b>	<b>FIG. No.</b>	<b>#/Assy</b>
14-011-340	Hinder cover	50		1
00-05-54	Safety	50	A75-1	8
00-03-58	Nut	50	A75-2	8
14-212-02-00 ÷ 02	Gasket	50	A75-3	6
14-612-15	Rubber packing	50	A75-5	2
14-612-151	Pinion	50	A75-6	2
14-612-110	Driver	50	A75-7	2
14-612-152	Case	50	A75-8	2
14-612-150	Ring	50	A75-9	2
14-611-279-02	Spring	50	A75-11	2
MRO-9	Coupling	50	A75-12	2

## Compressor Drive Assembly



*Fig. A 7-6*

<b>Part Number</b>	<b>Name</b>	<b>Page No.</b>	<b>FIG. No.</b>	<b>#/Assy</b>
14-011-340	Hinder cover	52		1
14-11-545	Gasket	52	A76-1	1
14-614-110	Pinion	52	A76-2	1
14-614-107	Case	52	A76-3	1
14-611-80-01	Coupling	52		1
14-611-252-01	Pin	52	A76-4	2
14-611-251-01	Semicoupling	52	A76-5	1
14-611-250-01	Semicoupling	52	A76-6	1

## Ignition Harness Assembly

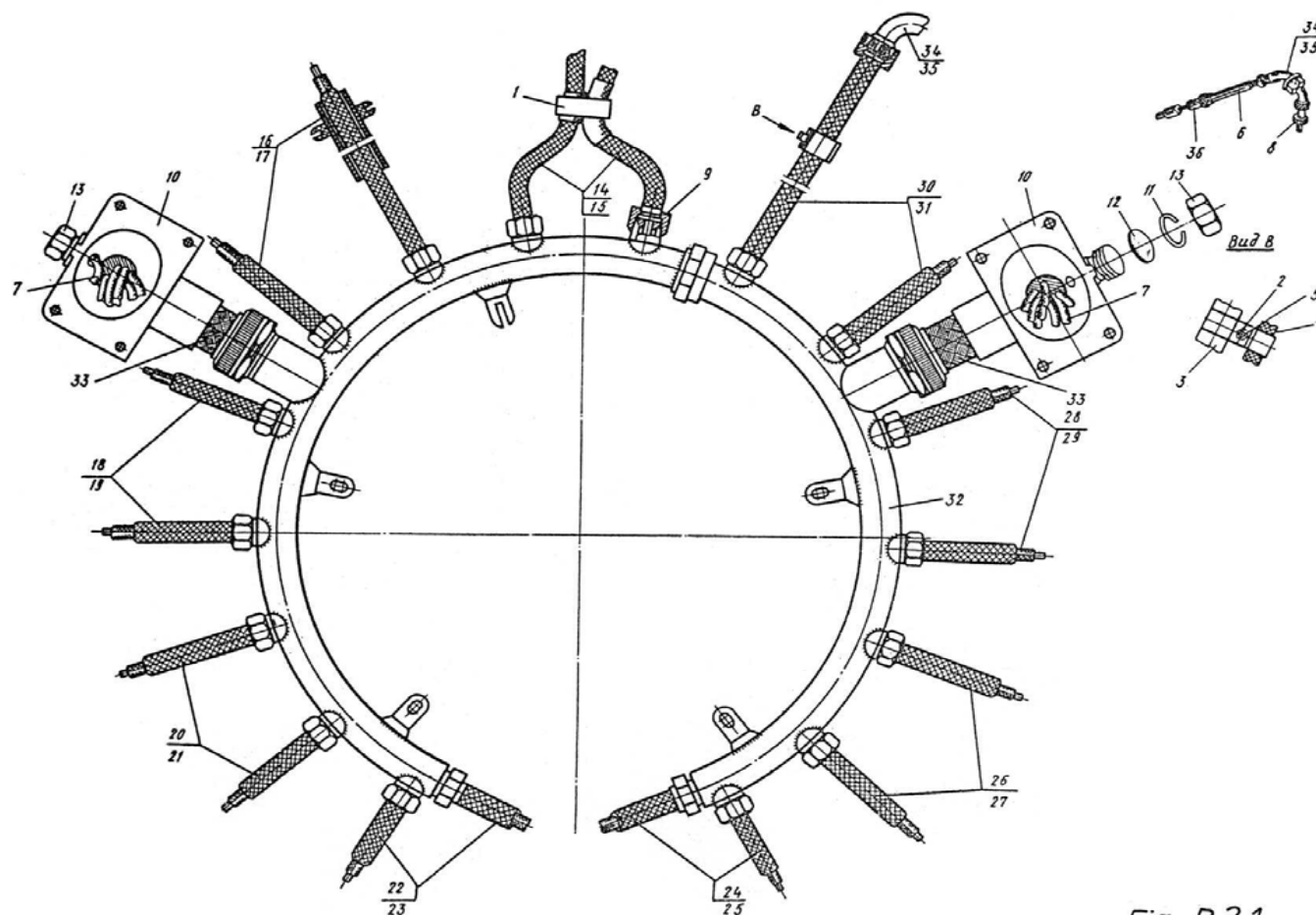


Fig. B 2-1

<b>Part Number</b>	<b>Name</b>	<b>Page No.</b>	<b>FIG. No.</b>	<b>#/Assy</b>
10-04-75	Collar	54	B21-1	9
10-04-57	Nut	54	B21-2	1
10-04-59	Collar	54	B21-3	1
14-04-507	Gasket	54	B21-4	1
112-08-26	Screw	54	B21-5	1
14-721-120-01	Wires collector	54		1
14-21-67	Cable shoe	54	B21-6	18
14-21-68	Cable shoe	54	B21-7	18
14-21-804	Cone	54	B21-8	18
14-21-805	Cone	54	B21-9	18
14-21-500	Fitting	54	B21-10	2
14-21-31	Washer	54	B21-11	1
14-221-03	Cover	54	B21-12	2
14-21-700	Nut	54	B21-13	2
14-721-119-01	Set wires	54		1
14-221-61	Rubber hose	54	B21-14	1
14-221-62	Rubber hose	54	B21-15	1
14-221-63	Rubber hose	54	B21-16	1
14-221-64	Rubber hose	54	B21=17	1
14-221-65	Rubber hose	54	B21-18	1
14-221-66	Rubber hose	54	B21-19	1
14-221-67	Rubber hose	54	B21-20	1
14-221-68	Rubber hose	54	B21-21	1
14-221-69	Rubber hose	54	B21-22	1
14-221-70	Rubber hose	54	B21-23	1
14-221-71	Rubber hose	54	B21-24	1
14-221-72	Rubber hose	54	B21-25	1

14-221-73	Rubber hose	54	B21-26	1
14-221-74	Rubber hose	54	B21-27	1
14-221-75	Rubber hose	54	B21-28	1
14-221-76	Rubber hose	54	B21-29	1
14-221-77	Rubber hose	54	B21-30	1
14-221-78	Rubber hose	54	B21-31	1
14-221-92	Collector	54	B21-32	1
14-721-118-01	Rubber hose	54	B21-33	2
15-21-80	Elbow	54	B21-34	9
KD18 (UE-70-18R)	Elbow	54	B21-35	9
KU-07	Connection	54	B21-36	18



# Air Compressor AK-50A

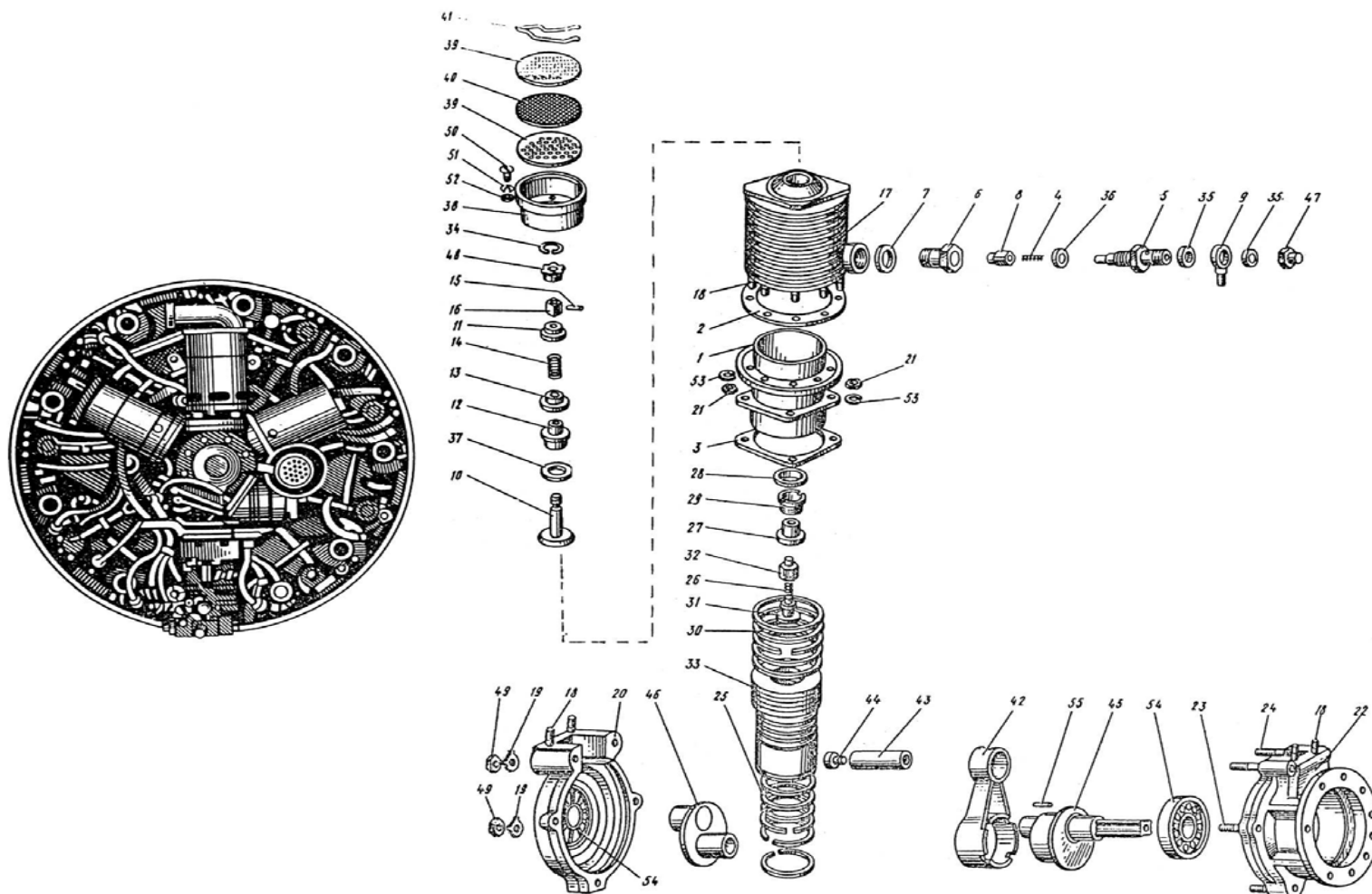


Fig. C 0-1

<b>Part Number</b>	<b>Name</b>	<b>Page No.</b>	<b>FIG. No.</b>	<b>#/Assy</b>
14-950-390-02	Compressor AK-50A	57		1
10-15-16	Cylinder tr.II	57	C01-1	1
10-15-22	Gasket	57	C01-2	1
10-15-23	Gasket	57	C01-3	1
11-14-318	Valve	57		1
11-14-26	Spring	57	C01-4	1
11-14-27	Fitting	57	C01-5	1
14-950-125	Case	57	C01-6	1
AK05-001	Gasket	57	C01-7	1
AK-50-602	Valve	57	C01-8	1
14-950-164	Nipple	57	C01-9	1
AK-50-204	Valve	57		1
11-14-20	Valve	57	C01-10	1
11-14-22	Plate	57	C01-11	1
AK-50-802	Seat	57	C01-12	1
AK-50-803	Spring	57	C01-13	1
AK-50-804	Spring	57	C01-14	1
AK-50-11	Pin	57	C01-15	1
AK-50-12	Nut	57	C01-16	1
14-950-460	Cylinder tr.I	57	C01-17	1
AK-50-223-01	Crankcase	57		1
00-01-502	Bolt	57	C01-18	17
00-05-58	Safety	57	C01-19	5
10-15-17	Crankcase	57	C01-20	1
66-RD-1	Nut	57	C01-21	12
AK-50-222	Crankcase	57		1
AK-50-31	Crankcase	57	C01-22	1

2-RD-2	Bolt	57	C01-23	3
KO-2042	Bolt	57	C01-24	2
AK-50-228-01	Piston	57		1
14-950-073	Ring	57	C01-25	5
14-950-123	Spring	57	C01-26	1
14-950-124	Case	57	C01-27	1
AK50-14	Washer	57	C01-28	1
AK50-15	Nut	57	C01-29	1
AK50-33	Ring	57	C01-30	5
AK50-601	Spring	57	C01-31	1
AK50-602	Valve	57	C01-32	1
AK50-227-01	Piston	57	C01-33	1
AK-04-510	Safety	57	C01-34	1
AK-05-002	Gasket	57	C01-35	2
AK-045-003	Gasket	57	C01-36	1
AK-05-004	Gasket	57	C01-37	1
AK-50-04	Cae	57	C01-38	1
AK-50-05	Filter	57	C01-39	2
AK-50-06	Filter element	57	C01-40	1
AK-50-07	Safety	57	C01-41	1
AK-50-400	Connecting rod	57	C01-42	1
AK-50-700	Pin	57		1
AK-50-701	Pin	57	C01-43	1
AK-50-702	Cover	57	C01-44	2
AK-50-901	Eccentric	57	C01-45	1
AK-59-902	Crank pin	57	C01-46	1
AK-59-906	Nut	57	C01-47	1
AK-59-907	Nut	57	C01-48	1

66-RD-1	Nut	57	C01-49	5
KO-158	Screw	57	C01-50	4
3402A-0,5-4-6	Washer	57	C01-51	4
4.65G.05	Washer	57	C01-52	4
GOST6402-70		57		
6.65G.05	Washer	57	C01-53	12
GOST6402-70		57		
A204- ETU 100/3	Bearing	57	C01-54	2
2,5X13,8 III	Needle	57	C01-55	50
ETU 100/7-u		57		

## Air Start Lines and Cylinder Start Valves

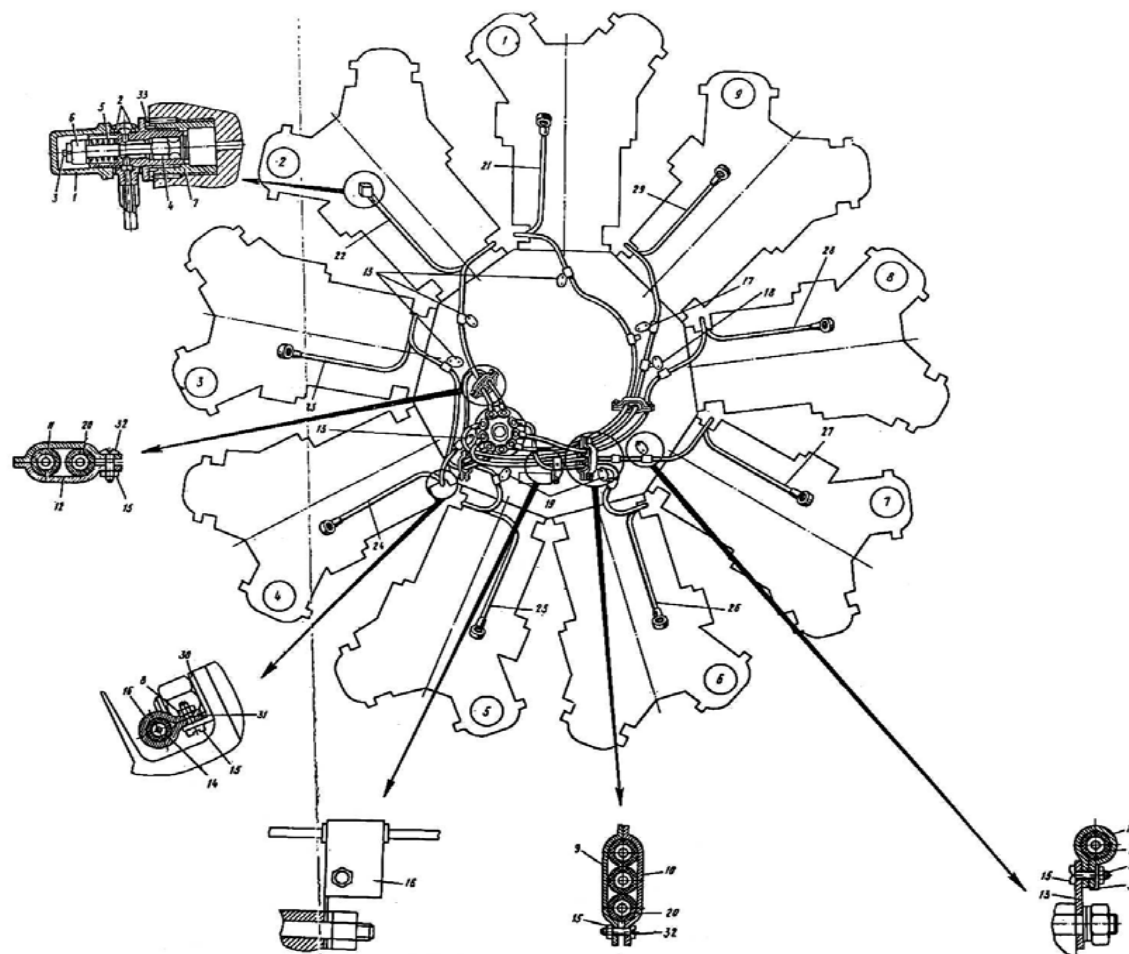
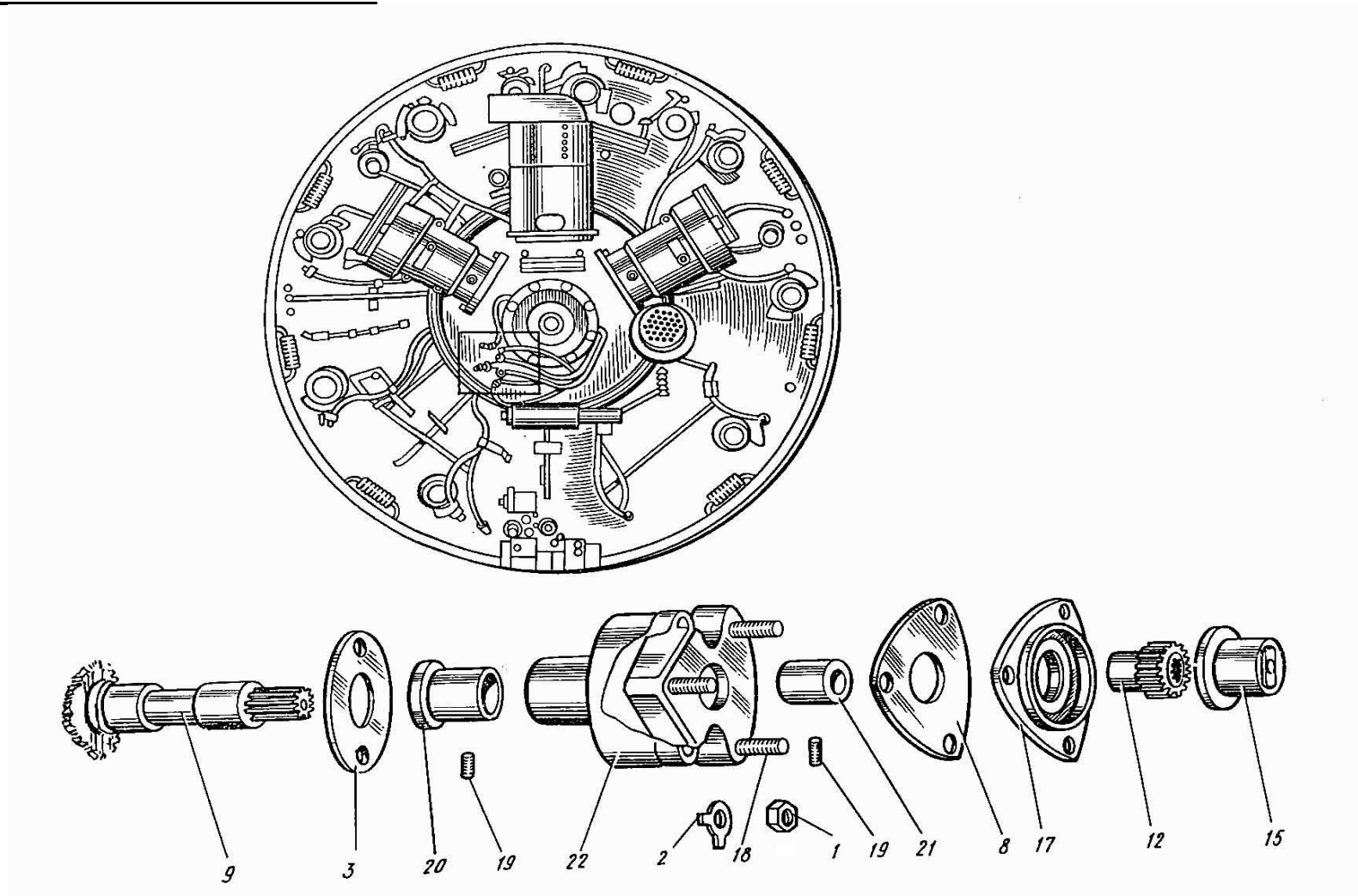


Fig. C 1-1

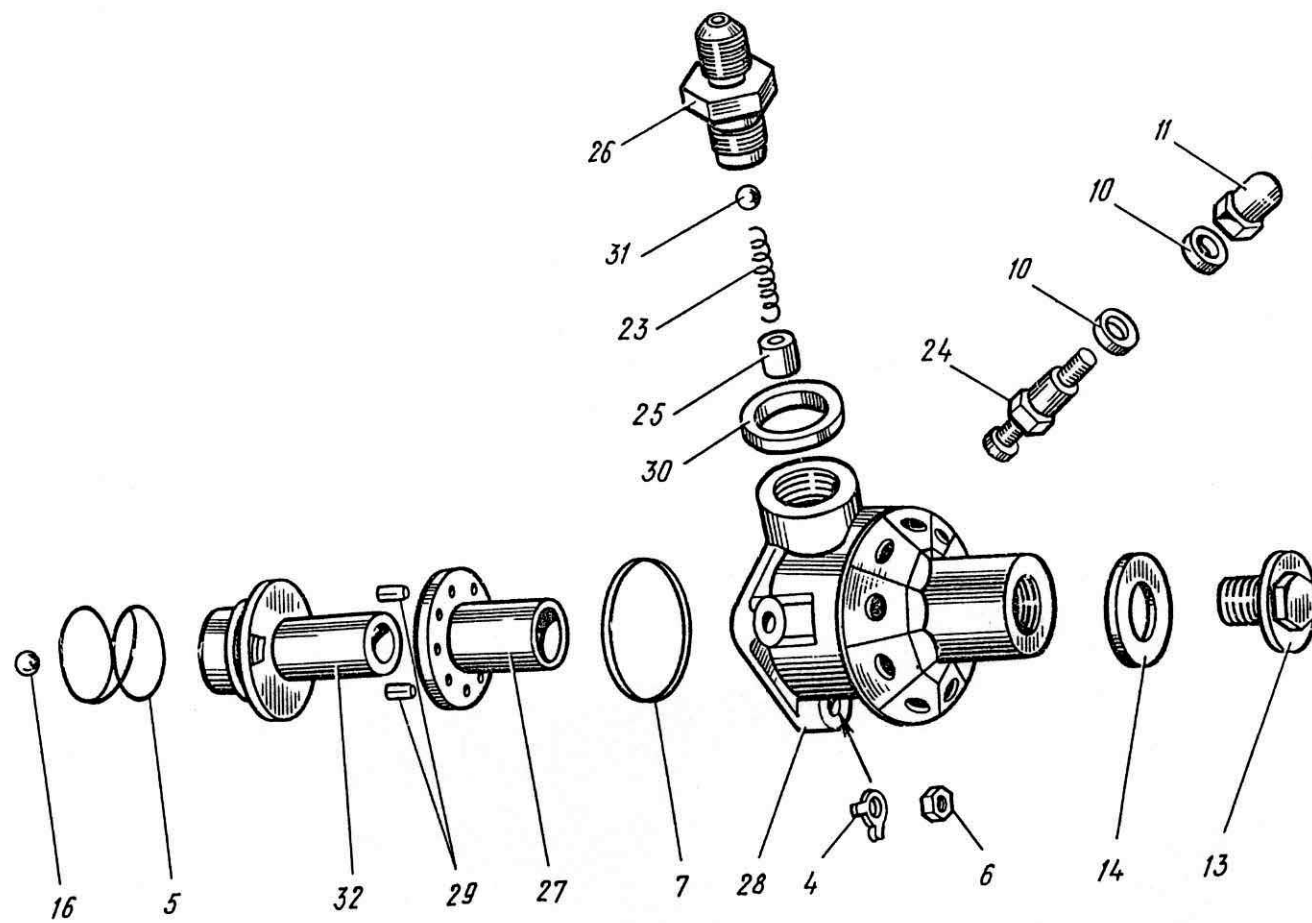
<b>Part Number</b>	<b>Name</b>	<b>Page No.</b>	<b>FIG. No.</b>	<b>#/Assy</b>
14-27-503	Cover	61	C11-1	9
14-27-531	Gasket	61	C11-2	18
14-27-602	Start valve	61		9
00-711-12	Split	61	C11-3	1
14-27-48	Valve	61	C11-4	1
14-27-49	Spring	61	C11-5	1
14-27-51	Nut	61	C11-6	1
14-27-501	Case	61	C11-7	1
14-627-19-01	Pipes-line	61		1
00-03-34	Nut	61	C11-8	26
11-04-43	Collar	61	C11-9	1
11-04-44	Collar	61	C11-10	1
11-04-45	Collar	61	C11-11	4
11-04-46	Collar	61	C11-12	4
12-27-25	Ring	61	C11-13	5
12-27-26	Gasket	61	C11-14	21
14-27-28	Screw	61	C11-15	21
14-27-29	Collar	61	C11-16	21
14-27-715	Ring	61	C11-17	1
14-27-716	Ring	61	C11-18	1
14-317-26	Safety	61	C11-19	2
14-327-16	Pipe-line	61	C11-20	12
14-627-20	Pipe-line cyl.1	61	C11-21	1
14-627-21	Pipe-line cyl.2	61	C11-22	1
14-627-22	Pipe-line cyl.3	61	C11-23	1
14-627-23	Pipe-line cyl.4	61	C11-24	1
14-627-24	Pipe-line cyl.5	61	C11-25	1

14-627-25	Pipe-line cyl.6	61	C11-26	1
14-627-26	Pipe-line cyl.7	61	C11-27	1
14-627-27	Pipe-line cyl.8	61	C11-28	1
14-627-28	Pipe-line cyl.9	61	C11-29	1
15-04-22	Safety	61	C11-30	9
26-28-23	Safety	61	C11-31	21
112-08-26	Screw	61	C11-32	5
AK-05-001	Gasket	61	C11-33	9
14-627-138	Collar	61	C11-34	1

## Air Start Distributor and Drive







<b>Part Number</b>	<b>Name</b>	<b>Page No.</b>	<b>FIG. No.</b>	<b>#/Assy</b>
14-011-340	Hinder cover			1
00-03-58	Nut	64	C12-1	2
00-05-58	Safety	64	C12-2	2
10-11-50	Gasket	64	C12-3	1
14-627-02	Air distributor			1
00-05-57	Safety	65	C12-4	3
14-27-08	Spring	65	C12-5	
14-27-12	Nut	65	C12-6	13
14-27-711	Ring	65	C12-7	1
14-27-537	Gasket	64	C12-8	1
14-27-714	pinion	64	C12-9	1
14-27-706	Gasket	65	C12-10	18
14-27-709	Nut	65	C12-11	9
14-227-11	Coupling	64	C12-12	1
14-327-14	Plug	65	C12-13	1
14-27-801	Tach Adapter	65	C12-13a	1
14-327-15	Gasket	65	C12-14	1
14-327-106	Bearing step	64	C12-15	1
5-60 GOST 3722	Ball	65	C12-16	1
14-427-06	Plate	64	C12-17	1
14-427-102	Case			1
00-01-600	Bolt	64	C12-18	3
00-12-11	Bolt	64	C12-19	2
10-11-49	Bushing	64	C12-20	1
14-27-713	Bushing	64	C12-21	1
14-227-12	Case	64	C12-22	1

14-627-01	Cover			1
11-04-75	Spring	65	C12-23	1
14-27-705	Fitting	65	C12-24	9
14-27-712	Bushing	65	C12-25	1
14-627-100	Fitting	65	C12-26	1
14-727-01	Bushing	65	C12-27	1
14-727-03	Cover	65	C12-28	1
73-RD-04	Checking pin	65	C12-29	2
AK-05-003	Gasket	65	C12-30	1
III 6 mm N GOST 3722	Roller	65	C12-31	1
14-727-02	Slide-valve	65	C12-32	1