

mod 7/1

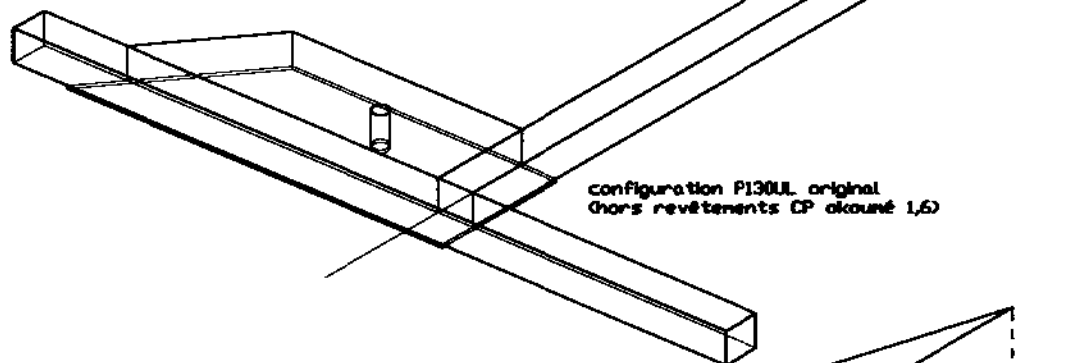
P130UL original
fixation barre
de traînée.

Idem, mod.7

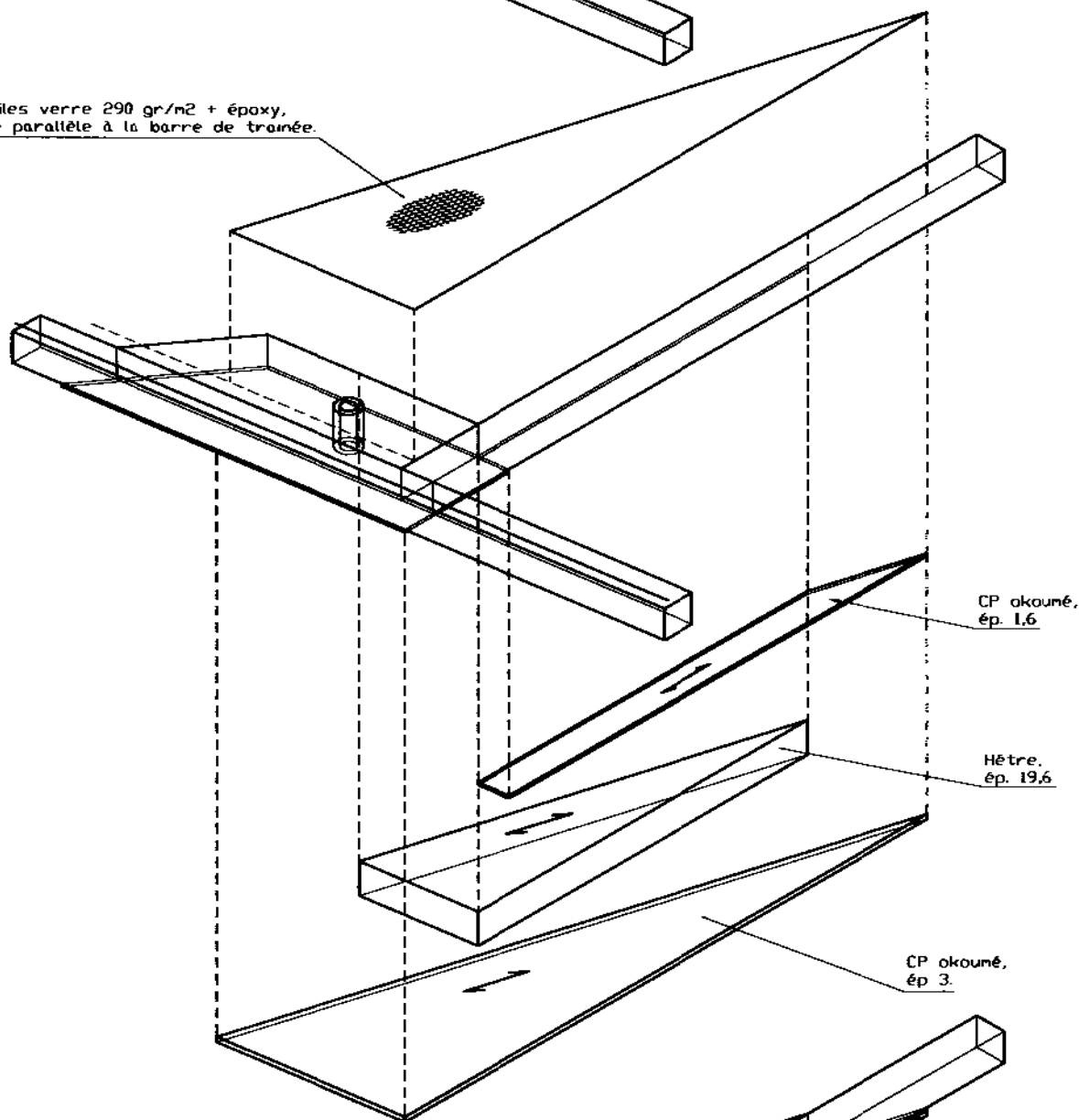
échelle 1/4

09.05.04

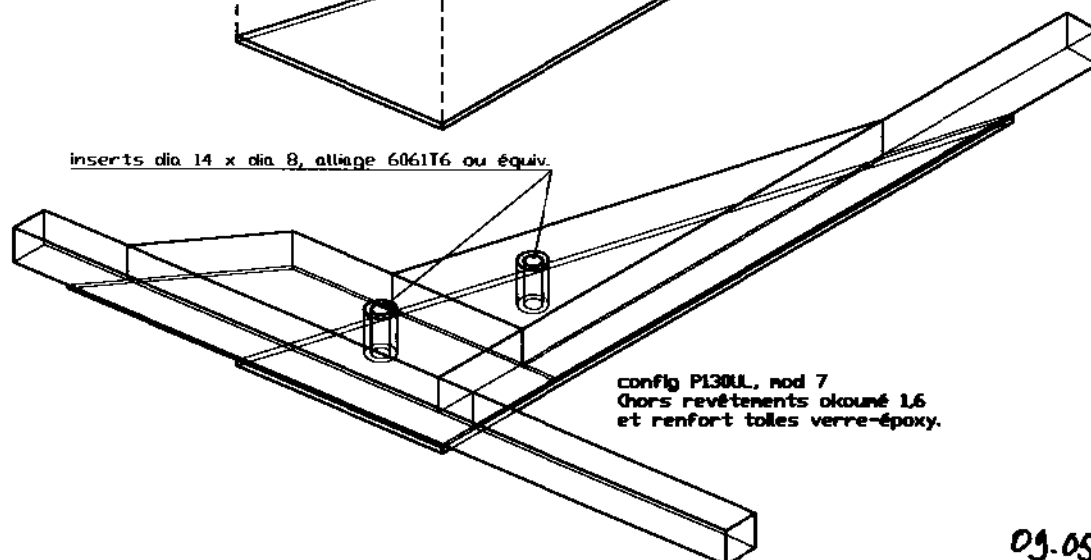
mod 7/2



2 toiles verre 290 gr/m² + époxy,
fibre parallèle à la barre de trainée.



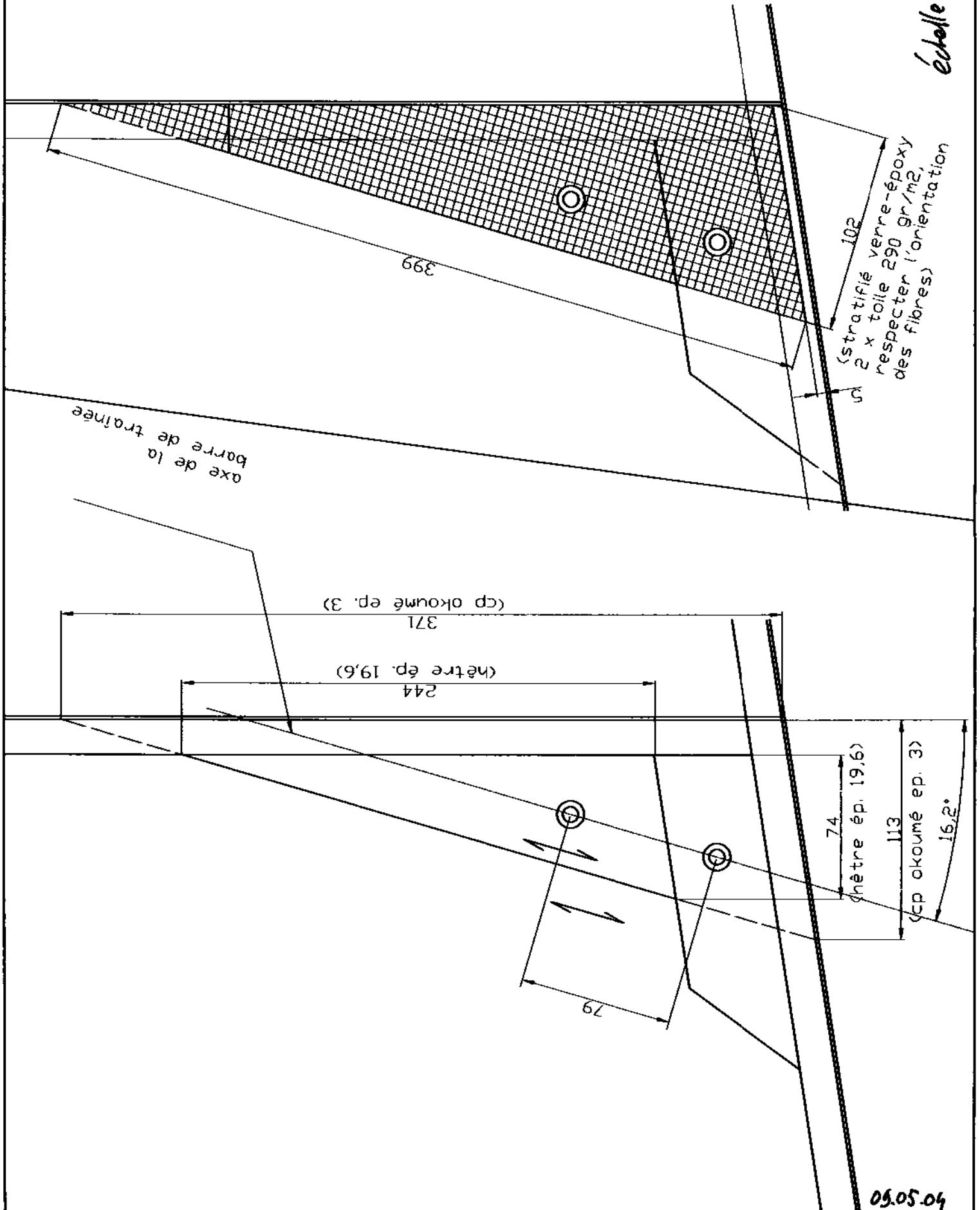
inserts dia 14 x dia 8, alliage 6061T6 ou équiv.



09.05.04

mod 7/3

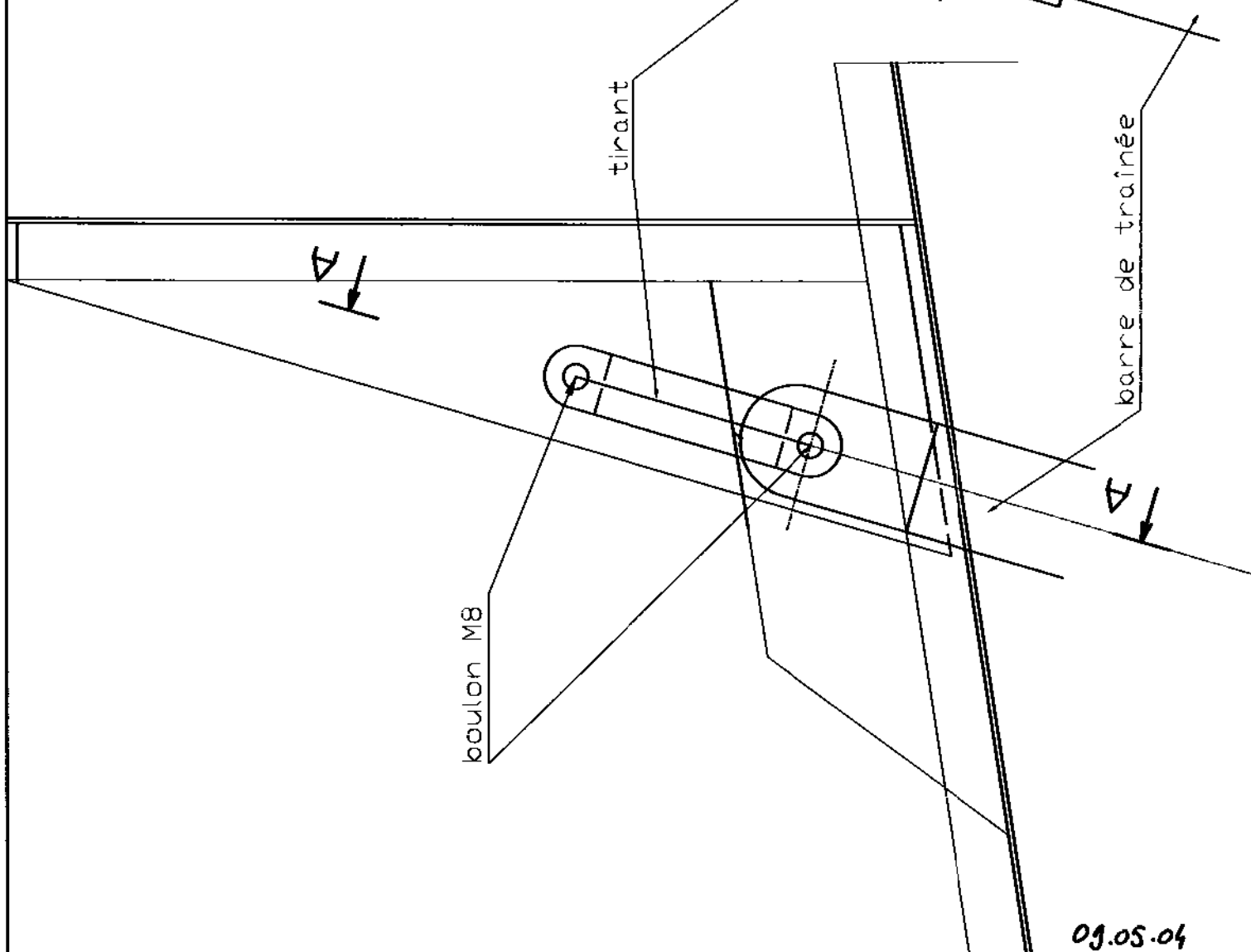
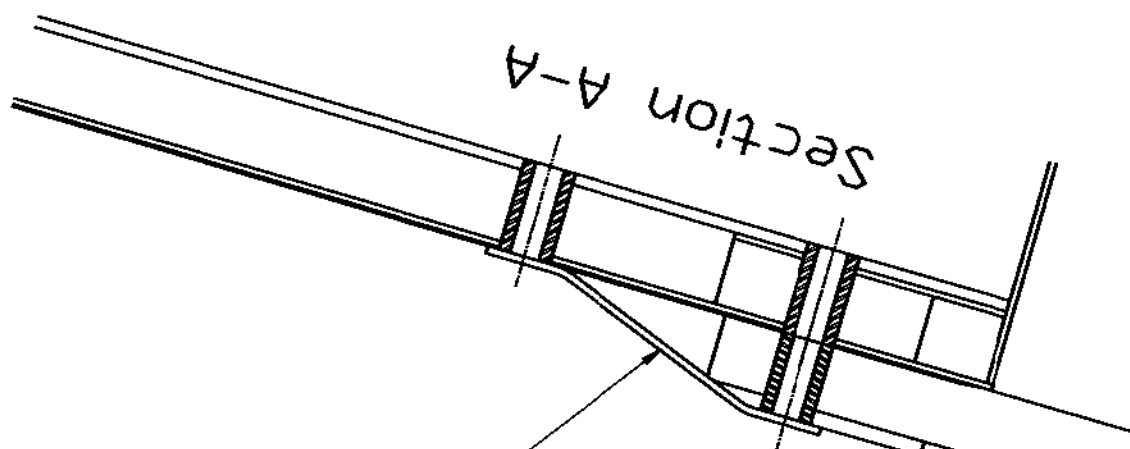
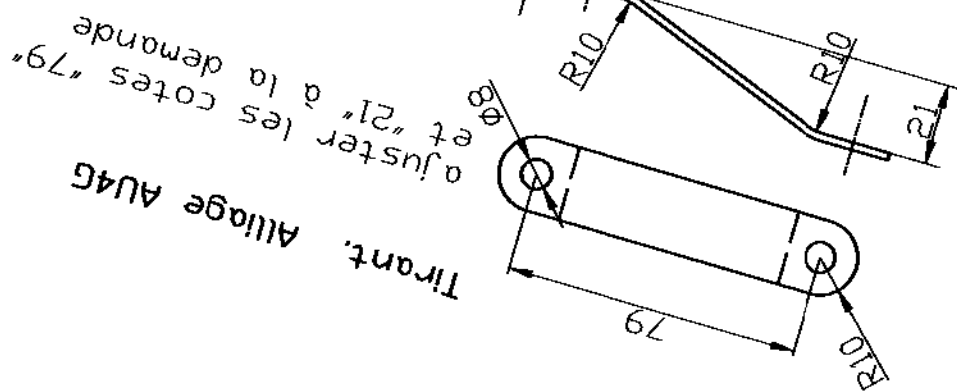
échelle 1/2.5



Assemblage barre de traînée sur fuselage

mod 7/4 et fin

échelle 1/2



09.05.04