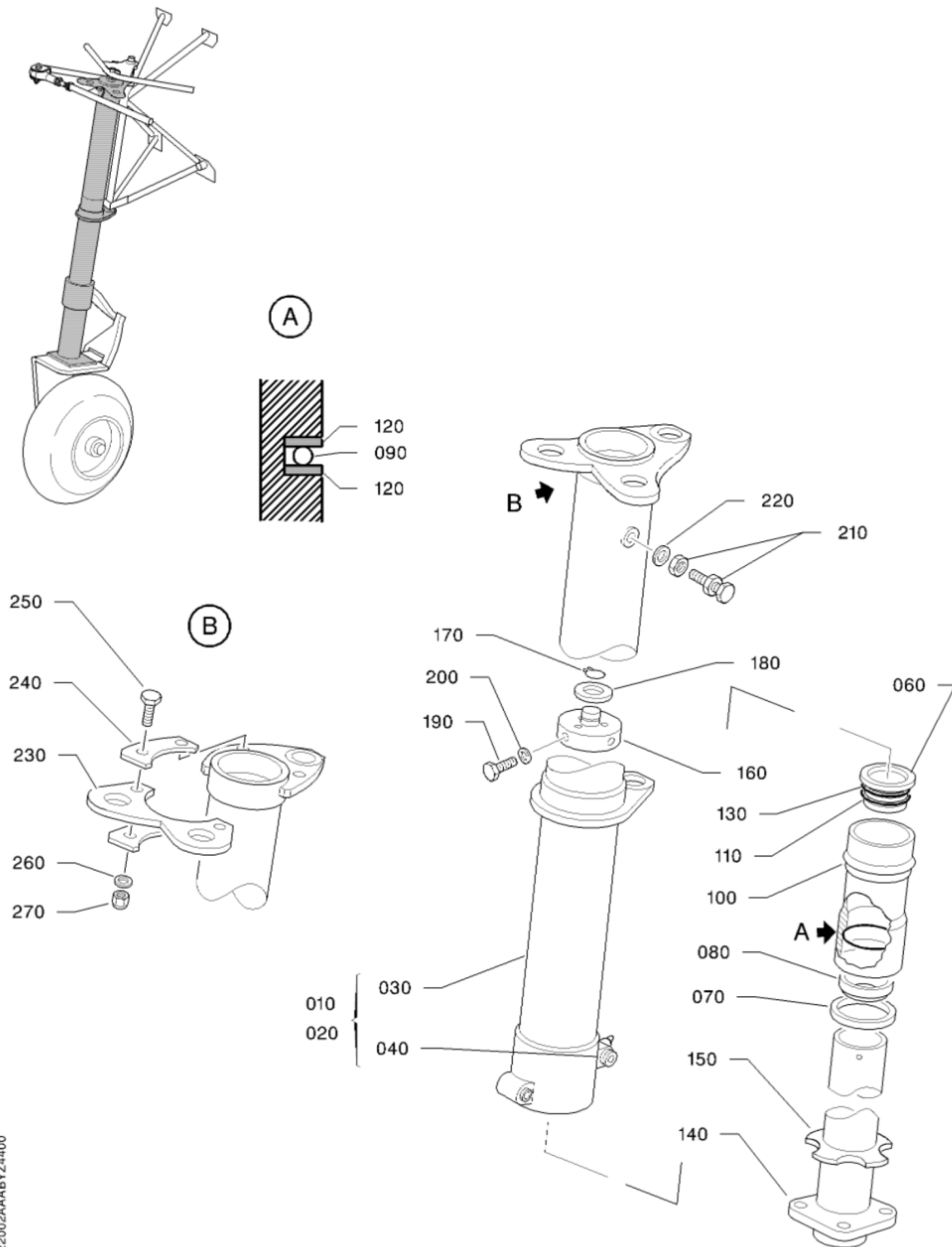


32

LANDING GEARS



SHOCK ABSORBER
FIGURE 1

32-20-02

FIG. 1

PAGE 0 R

NOV 30/18

S/N 1 - 803, 805, 806, 809 - 815, 820 - 822, AFTER STOCK DEPLETION SEE FIG. 1A

FIG. ITEM	PART NUMBER	NOMENCLATURE						EFFECT FROM TO	UNITS PER ASSY	OBS
		1	2	3	4	5	6			
1 - 1	TF32-20-02-01-001	SHOCK ABSORBER							RF	
10	TB10 42000003	..SHOCK ABSORBER ASSY							1	
20	TB10 42011002	..NOSE GEAR STRUT ASSY							1	
30	TB10 42011004	...NOSE GEAR STRUT							1	OR
		RPLD BY TB10 42011005								
- 30A	TB10 42011005	...NOSE GEAR STRUT							1	
		RPLS TB10 42011004								
40	TB10 09066100	...RING							2	
- 40A	TB10 41034105	...RING							2	
		REPAIR AFTER THE BOSS HAS BEEN COUNTERBORED TO DIA. 0.48 IN (+ 0.0007 ; + 0) [12.1 MM (+ 0.018 ; + 0)]								
50	TB10 42030100	..BEARING TUBE							1	
60	TB10 42031100	..SEALED PLUG							1	
70	7135110001	..RETAINING RING VF0272							1	
		OPT TO VJ68X2.5V MADE BY VF0272								
80	7061080732	..RING							1	
90	7423081059	..O-RING							1	
100	7423081037	..O-RING							1	
110	7423081081	..O-RING							1	
120	7061080731	..RING							2	
130	TB10 41026100	..SNAP RING							1	
140	TB10 42012000	..SLIDING TUBE							1	OR
150	TB10 42019100	..STOP							1	
160	TB10 42032101	..RESTRICTOR							1	
170	7762234114	..RETAINING RING							1	R
		OPT TO 23201AM0140T MADE BY VF0111								
180	TB10 42034100	..VALVE							1	
		ATTACHING PARTS								
190	5109337285	..BOLT VF7411							3	
200	7061550011	..GASKET VF0229							3	
		OPT TO BSA6 PC851A MADE BY VF0229								
		* * *								
210	7886114805	..VALVE VF0826							1	
		OPT TO 34698-00 MADE BY VF0826								
220	7423161004	..GASKET VF1190							1	
		OPT TO 8X12X1 ALUMINIUM MADE BY VF1190								
230	TB10 42011111	..CAM							1	
		RETROFIT								
240	TB10 42011112	..SPLICE							4	
		RETROFIT								

- ITEM NOT ILLUSTRATED

32-20-02

FIG. 1

PAGE 1

NOV 30/18

S/N 1 - 803, 805, 806, 809 - 815, 820 - 822, AFTER STOCK DEPLETION SEE FIG. 1A